





**GETTING
it DONE**

NSW Treasury

52 Martin Place, Sydney NSW 2000

**www.budget.nsw.gov.au
www.treasury.nsw.gov.au**

NSW Budget 2019-20 publications include:

Budget paper no. 1 Budget Statement
Budget paper no. 2 Infrastructure Statement
Budget paper no. 3 Budget Estimates
Budget paper no. 4 Appropriation Bills
Election Commitments
NSW Regions + Western Sydney
Speech

Cover image credit:

NSW Police

This publication is protected by copyright. With the exception of (a) any coat of arms, logo, trade mark or other branding; (b) any third party intellectual property; and (c) personal information such as photographs of people, this publication is licensed under the Creative Commons Attribution 3.0 Australia Licence. The licence terms are available at the Creative Commons website at:

<https://creativecommons.org/licenses/by/3.0/au/legalcode>

NSW Treasury requires that it be attributed as creator of the licensed material in the following manner:

© State of New South Wales (NSW Treasury), (2018).

CONTENTS

—

- 05 Treasurer's message
- 07 Education
- 11 Health
- 15 Transport
- 21 Stronger Communities
- 25 Planning, Industry and Environment
- 31 Customer Service
- 35 Treasury
- 37 Premier & Cabinet
- 39 Local Communities



TREASURER'S MESSAGE

In March this year, the people of New South Wales put their faith in the Liberals & Nationals to maintain the momentum of eight years of progress and keep building a better state.

We're getting straight to work putting our positive plan into action and it is an honour to now present the 2019-20 Budget that delivers on our commitments and gets on with the job, making record investments in the services and infrastructure that make a real difference to people's lives.

Over the last 12 months, the global and national economies have slowed and here in New South Wales local challenges have arisen too. Our farmers are enduring the worst drought in living memory, the housing market has cooled and households are feeling the pinch.

Our prudent financial management since coming to office means we are well placed to rise to these challenges. Our budget is firmly in the black, with solid surpluses forecast for the next four years, net debt still negative and the lowest of all the states.

We are redoubling our efforts to improve government efficiency, eliminate waste and save taxpayers money, moving resources from the back office of government to the frontline of service delivery and our careful spending and responsible financial management mean we can invest where it matters most for the people of our state.

With almost the entire state now affected by drought, our farming communities are being put to the ultimate test. This budget brings more critical relief in their time of need, with more funding to better secure our precious water supplies.

We're easing cost of living pressures for families and individuals with new initiatives like our \$50 weekly Opal fare cap and no-interest loans for solar panels and batteries for up to 300,000 homes. And to further reduce the cost of getting kids into sport, we're doubling the Active Kids voucher program, with two \$100 vouchers now available to families for each child every year.

To bolster New South Wales' reputation as the education state and give our kids the best chance at success, we're employing an unprecedented 4,600 new teachers, and building 190 new and upgraded schools, while setting an ambitious goal of making New South Wales the best state for education by 2022. And to make life easier for parents, we're funding free dental checkups in select regions and providing before and after school care in every public school in the state.

We're ensuring better care in world-class hospitals, with 29 new hospitals on the way and 8,300 new nurses, doctors and other health professionals too — the biggest boost to frontline health workers in New South Wales history. New funding for Kids Helpline will provide vital help in times of crisis and historic support for spinal injury research and treatment will bring new hope to the seriously injured.

For those members of our community most in need, we're doing more to break the cycle of disadvantage, funding better infrastructure in indigenous communities, a new Disability and Ageing Commissioner and supporting Foodbank to provide breakfast at 500 more schools for kids who would otherwise go without.

As our vision for a New South Wales of thriving cities and regions takes shape, another record infrastructure pipeline of \$93 billion will keep delivering the public transport, roads and cultural facilities that make our communities great places to be, no matter where you live. From new metro lines to Parramatta and the Western Sydney Airport, regional rail and road upgrades and motorways and highways in every corner of the state, we're connecting New South Wales like never before.

Great services and infrastructure are the foundations for thriving communities and this budget does more to create better opportunities for the working men and women of New South Wales. New employment precincts will be hubs of learning, innovation and entrepreneurship in industries like technology, health and nuclear medicine and 100,000 free TAFE and VET courses will give aspiring workers — young and old — the skills they need to secure fulfilling jobs.

As the global economic landscape transforms and with new challenges and opportunities approach fast on the horizon, we are taking action now, with a new wave of reforms to set New South Wales up for an even brighter future.

We will continue to grow the Generations Fund to keep debt sustainable for future generations and the next phase of Outcomes Budgeting will ensure government spending is getting real results for the people of our state.

A new Economic Blueprint for New South Wales will chart the most comprehensive plan ever devised for the New South Wales economy and we will take the national lead on reform of Commonwealth funding arrangements, to find ways to better secure great services and infrastructure and encourage growth and investment in our economy.

This is a budget of delivery to kick start a term of delivery — a budget that keeps our promises, creates new opportunities for everyone in New South Wales and paves a new path for the Premier State to stride confidently into the future.



Dominic Perrottet
NSW Treasurer



O'CONNELL STREET PUBLIC SCHOOL, PARRAMATTA
Photo credit: School Infrastructure NSW



EDUCATION CLUSTER

DEPARTMENT OF EDUCATION

AN ADDITIONAL 4,600 TEACHERS FOR NEW SOUTH WALES

- 4,600 extra teachers will be recruited across government schools in New South Wales over four years to meet population growth and provide more targeted support to the students that need it most. This investment will deliver the highest number of teachers in government schools in the State's history.

CAPITAL WORKS FUNDING FOR NON-GOVERNMENT SCHOOLS

- **\$500 million** over four years to support non-government schools to build, extend, or upgrade their facilities to provide more student places in growing communities.

ELIMINATING MAINTENANCE BACKLOG IN SCHOOLS

- **\$449 million** to clear the existing school maintenance backlog in all public schools by July 2020, bringing the total investment to more than \$1.3 billion over five years.

SUPPORTING STUDENT WELFARE AND MENTAL HEALTH

- **\$88.4 million** over four years to employ 100 additional school counsellors or psychologists and an additional 350 student support officers, as well as dedicated services for rural and remote students. The commitment also includes a partnership with mental health organisations who will bring their expertise to schools to ensure public high school students across the state have access to mental health and wellbeing support.

SUSTAINABLE SCHOOLS PROGRAM

- **\$10 million** over four years for the Sustainable Schools Program to help schools and students develop innovative and hands-on solutions outside the classroom to reduce, re-use and recycle in order to make their school environments more sustainable.

\$449

MILLION

to clear the existing school maintenance backlog by July 2020

4,600

ADDITIONAL

teachers for the NSW public education system

RECORD INVESTMENT IN NEW SOUTH WALES SCHOOL INFRASTRUCTURE

Build eight new schools and significantly upgrade a further 32 schools, bringing the Government's total investment in school infrastructure to **\$6.7 billion** over the next four years.

NEW SCHOOLS

- A high school in Bungendore
- A primary school in Epping
- A high school in Jerrabomberra
- Planning for a high school in Marsden Park
- Relocation of Budawang School
- A primary school - Mulgoa Rise (Glenmore Park)
- Planning for a new primary school in South Nowra/Worrigee
- A primary school in Tallawong

UPGRADED SCHOOLS

- Bangalow Public School
- Bexhill Public School
- Bletchington Public School
- Brooke Avenue Public School
- Planning for Castle Hill Public School
- Cranebrook High School
- Planning for Cronulla High School
- Eastwood Public School
- Engadine High School
- Epping West Public School
- Glenmore Park High School

- Glenwood High School
- Hastings Secondary College, Port Macquarie Campus
- Planning for Hunter River High School
- Planning for Irrawang High School
- Jamison High School
- Jannali East Public School
- Jindabyne Central School (Stage 2)
- John Palmer Public School
- Planning for Matthew Pearce Public School
- Millthorpe Public School
- Milperra Public School
- Mona Vale Public School
- Mosman High School
- Muswellbrook South Public School
- Nepean Creative and Performing Arts High School
- Planning for North Sydney Demonstration School
- Planning for Orange Grove Public School
- Queanbeyan West Public School
- Stanwell Park Public School
- Teven-Tintenbar Public School
- Yass High School



PENRITH PUBLIC SCHOOL

Photo credit: School Infrastructure NSW

EDUCATION CLUSTER CONT.

DEPARTMENT OF EDUCATION

INCREASED FUNDING FOR PRESCHOOL CAPITAL WORKS

- An additional **\$20 million** over four years for new and existing community preschools, to build, renovate or extend their facilities to cater for increasing enrolments across the state.

HEALTHY HAROLD PROGRAM

- **\$2 million** over four years to support Life Education NSW to continue to deliver the Healthy Harold program and promote healthy lifestyles in schools.

SUPPORT FOR COMMUNITY LANGUAGE SCHOOLS

- **\$200,000** to support the NSW Federation of Community Language Schools to assist students to learn a second language.

IMPROVING AMENITY IN NEW SOUTH WALES PUBLIC SCHOOLS

- Upgrade the amenity of 11 schools at a cost of **\$7.4 million** including installation of solar panels, covered outdoor learning areas and upgrades to sports facilities. Schools to receive upgrades include:
 - Callala Public School
 - Geurie Public School
 - Hurstville Grove Infants School
 - Huskisson Public School
 - Kingswood Park Public School
 - Kingswood South Public School
 - Lapstone Public School
 - Manly West Public School
 - Mudgee Public School
 - Rose Bay Secondary College
 - York Public School.

OTHER MINOR WORKS UPGRADES

- Provide **\$11,000** to Wisemans Ferry Public School for a large playground shade cover and \$30,000 to Ebenezer Public School for a front fence.

OLYMPICS UNLEASHED

- Provide **\$1 million** over two years to the Australian Olympic Committee to support the rollout of Olympics Unleashed, a program for Year 9 public school students.

TAFE NSW

70,000 FREE TRAINEESHIPS

- From 1 January 2020, 70,000 fee-free traineeships will be provided to young job seekers.

HELPING MATURE AGED WORKERS GET BACK INTO THE WORKFORCE

- Free TAFE qualifications and career counselling for up to 30,000 mature aged workers who are seeking to re-train or re-enter the workforce.

WESTERN SYDNEY CONSTRUCTION HUB

- **\$79.6 million** over four years to deliver a new TAFE super campus for Western Sydney, specialising in construction trades.

TAFE NSW CONNECTED LEARNING CENTRES

- **\$61.7 million** over four years to construct eight new TAFE Connected Learning Centres in rural and regional locations, including at Byron Bay, Nelson Bay, Bateman's Bay, Jindabyne, Nambucca Heads, Hay, Cobar and West Wyalong.

PROMOTE YOUNG PEOPLE IN TRADE

- **\$34 million** in capital expenditure over two years to establish a pilot program for two senior secondary vocational schools in Western Sydney and the North Coast to support young people to build skills and get into a trade.
- Expansion of Productivity Bootcamps to two new sites in Western Sydney and the South Coast. This program provides fully-subsidised skills training to help young people secure a career in the construction industry.

HELPING WOMEN TO START THEIR OWN BUSINESS

- **\$5.9 million** over four years to offer online courses for women to build their financial literacy and business start-up skills, together with mentoring, networking and coaching opportunities from January 2020.

NEW TAFE SHARED SERVICE CENTRE

- Build a TAFE shared service centre in Griffith, which will be operational in 2021. The new centre will create 60 new jobs for the region in highly-skilled areas such as ICT and finance.



40

new and upgraded schools



100,000

fee-free TAFE and VET courses

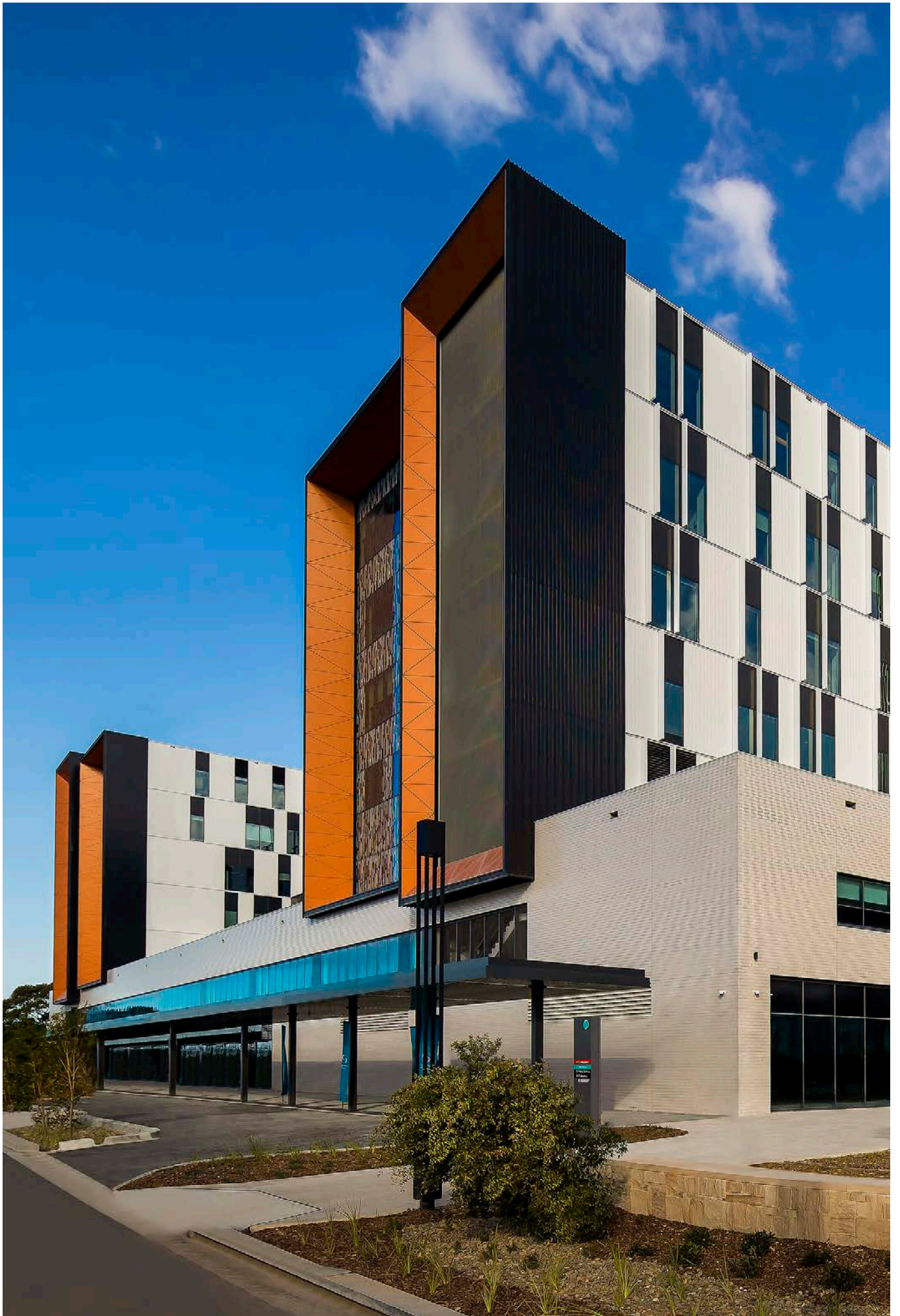


\$120 MILLION

Investment over four years to expand before and after school care

PROVIDING ADDITIONAL RESOURCES FOR BEFORE AND AFTER SCHOOL CARE

- Investment of **\$120 million** over four years to expand before and after school care, making it available to all parents with children who attend public primary schools by 2021. This includes:
 - **\$50 million** in additional minor capital works funding to help schools buy new equipment and expand their facilities
 - **\$40 million** to provide rental subsidies of up to \$15,000 per year for child care providers located at public primary schools if they can demonstrate savings have been passed on to families
 - **\$20 million** for creation of an implementation fund focused on schools where a standalone service may not be viable, including smaller schools and rural and remote communities
 - **\$8 million** creation of a specialist team to help coordinate services and resources to make it easier to setup and maintain a child care service
 - **\$2 million** development of a new website and mobile app to allow parents and carers to search for student places online.



NORTHERN BEACHES HOSPITAL
Photo credit: Ministry of Health



HEALTH CLUSTER

8,300 ADDITIONAL FRONTLINE HEALTH STAFF

- Recruit a total of 8,300 frontline health staff, over four years, with 45 percent located in regional New South Wales, including an additional:
 - 5,000 nurses and midwives including mental health and palliative care nurses, School Nurse Coordinators and six additional Breast Care Nurses for the McGrath Foundation
 - 1,060 medical staff including doctors, psychiatrists and specialists to enhance response times for patients waiting in emergency departments, for elective surgery and to access psychiatric care
 - 880 allied health staff including pharmacists, social workers, physiotherapists, occupational therapists and psychologists
 - 1,360 hospital support staff.

PLANNING FOR THREE NEW HEALTH PROJECTS

- Progress planning for the \$263 million Grafton Base Hospital Redevelopment, in addition to the \$17.5 million already invested in the current upgrade of the hospital.
- Progress planning for the Forster-Tuncurry facilities, as well as planning for the Wagga Wagga Hospital car park to commence in 2019-20.

BOOSTING PALLIATIVE CARE SERVICES

- \$45 million** over four years for palliative care including 100 palliative care nurses, Aboriginal health workers, digital health solutions and the refurbishment of existing palliative care wards and facilities. These palliative services complement the \$100 million package for palliative care announced in the 2017-18 Budget.

8,300
*additional
frontline
health staff*

\$45
MILLION
*for palliative care
including 100
palliative care
nurses*



RECORD HEALTH BUILDING BOOM TO CONTINUE IN NEW SOUTH WALES

A further 29 hospital and health facility projects to commence prior to March 2023, including:

- Bankstown-Lidcombe Hospital (ETC \$1.3 billion)
- John Hunter Health and Innovation Precinct (ETC \$780 million)
- Royal Prince Alfred Hospital (ETC \$750 million)
- The Children's Hospital at Westmead Stage 2 (ETC \$619 million)
- Sydney Children's Hospital at Randwick and Comprehensive Children's Cancer Centre (ETC \$608 million)
- Ryde Hospital (ETC \$479 million)
- Shoalhaven Hospital (ETC \$434 million)
- St George Hospital (ETC \$385 million)
- Griffith Base Hospital (ETC \$250 million)
- Eurobodalla Hospital (ETC \$150 million)
- Manning Base Hospital Stage 2 (ETC \$100 million)
- Sutherland Hospital (ETC \$81.5 million)
- Ballina District Hospital (ETC \$80.4 million)
- Moree Hospital (ETC \$80 million)
- Cowra Hospital (ETC \$70.2 million)
- Hornsby Ku-ring-gai Hospital (an additional \$65 million, ETC \$386m)
- Bowral Hospital Stage 2 (ETC \$55 million)
- Gunnedah Hospital (ETC \$53 million)
- Liverpool Hospital Car Park (ETC \$50 million)
- Albury Hospital (ETC \$45 million)
- Concord Hospital Car Park (ETC \$32.4 million)
- Goulburn Base Hospital (an additional \$30 million, ETC \$150 million)
- Dubbo Hospital Car Park (ETC \$30 million)
- Shellharbour Hospital Car Park (ETC \$23.3 million)
- Glen Innes Hospital (ETC \$20 million)
- Iluka Ambulance Station (ETC \$10 million)
- Mona Vale Hospital (an additional \$10 million)
- Deniliquin Hospital (ETC \$3.2 million)
- Leeton Hospital (ETC \$2.5 million)



LIVERPOOL HOSPITAL
 Photo credit: Ministry of Health

HEALTH CLUSTER CONT.

FAST TRACKING ADDITIONAL PAEDIATRIC SURGERY AND CATARACT SURGERY

- **\$76 million** over four years to boost elective surgery, focusing on children and cataract patients with the delivery of an additional 8,000 paediatric operations and 10,000 cataract surgeries.

FREE DENTAL CHECKS FOR PRIMARY SCHOOL KIDS

- **\$70 million** over four years to provide 35 new free mobile dental clinics for primary school children in Western Sydney, the Mid North Coast and the Central Coast. This service will allow access to dental checks and basic dental care for up to 136,000 primary school children each year.

MORE CARE FOR KIDS WITH ALLERGIES

- **\$4.6 million** over four years to expand services to reduce waiting times for children's allergy testing and management.

MORE SUPPORT FOR LIFELINE AND KIDS HELPLINE

- **\$23.5 million** to expand the capacity of Lifeline and Kids Helpline over four years, including funding to introduce the Lifeline Crisis SMS service into New South Wales.

GOULBURN RESIDENTIAL REHABILITATION SERVICE

- **\$6.2 million** over four years from 2020-21 towards a minimum ten-bed mixed gender drug and alcohol residential rehabilitation service in Goulburn with 'step up' and 'step-down' day program support.

EATING DISORDER TREATMENT HUB

- An additional **\$9.6 million** over the next four years to allow more people to access medical and mental health support for treating an eating disorder.

STATE-WIDE INTELLECTUAL DISABILITY AND MENTAL HEALTH TERTIARY HUBS

- An additional **\$4.4 million** to deliver State-wide Intellectual Disability and Mental Health Tertiary Hubs for people with an intellectual disability who need mental health treatment. The Hubs will operate within the Sydney Local Health District and the Sydney Children's Hospitals Network and be available to people across metropolitan, rural and regional New South Wales.

SPECIALISED MENTAL HEALTH BEDS

- Begin planning to deliver specialised mental health beds for mothers and their babies and children and young people in public hospitals, as part of the State-wide Mental Health Infrastructure Program. This includes a new mother and baby unit at Westmead and Royal Prince Alfred Hospitals and a new child and adolescent mental health unit at Nepean Hospital.

STROKE TELEHEALTH SERVICE IN REGIONAL HOSPITALS

- Rollout the **\$21.7 million** Centralised Stroke Telehealth Service across New South Wales regional and rural hospitals over three years (with \$12.3 million funding from New South Wales Government and \$9.4 million from the Commonwealth Government).

NEW INCIDENT MANAGEMENT SYSTEM FOR NEW SOUTH WALES HEALTH

- Rollout a new incident management system across New South Wales Health over the next two years to improve access to reliable information about incidents of violent behavior in and around New South Wales hospitals.

EXPLORE DEVELOPMENT OF A HEALTH CENTRE FOR LGBTIQ+ PEOPLE

- Grant funding of up to **\$500,000** for the AIDS Council of NSW to develop a feasibility study for a Health Centre that provides health care, support and referral services to LGBTIQ+ people in New South Wales.

UPGRADE FOR CROOKWELL DISTRICT HOSPITAL

- **\$2.5 million** towards upgrades at the Crookwell District Hospital.

NEW PALLIATIVE CARE SERVICES IN BATHURST

- Seek expressions of interest to provide additional palliative care services in Bathurst.

LIVERPOOL HEALTH AND ACADEMIC PRECINCT

- Establish the Liverpool Health and Academic Precinct, based around the **\$740 million** redevelopment of Liverpool Hospital. The precinct will be a partnership between the South Western Sydney Local Health District, University of New South Wales, University of Wollongong, Western Sydney University, and the Ingham Institute for Applied Medical Science.

NEW AMBULANCE INFRASTRUCTURE AT MONA VALE HOSPITAL

- Invest in a new ambulance station at Mona Vale Hospital as part of the Government's \$184 million Sydney Ambulance Metropolitan Infrastructure Strategy program.



\$76
MILLION

to fast track additional paediatric surgery and cataract surgery



\$23.5
MILLION

to expand Lifeline and Kids Helpline



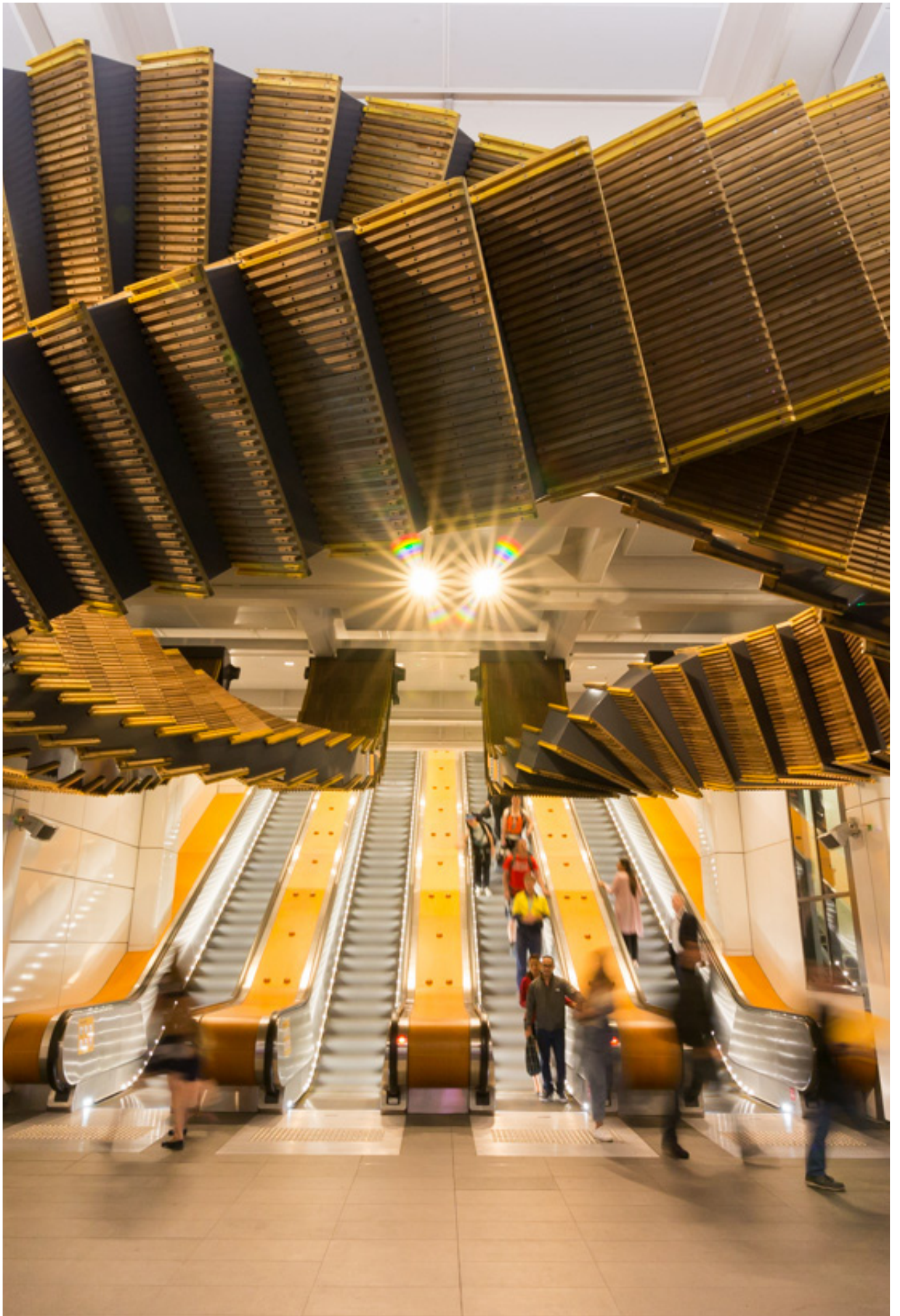
\$42
MILLION

to improve affordability and access to IVF services

IMPROVED ACCESS TO IVF SERVICES

\$42 million over four years to improve affordability and access to IVF services across New South Wales, including:

- a rebate of up to \$500 through Service NSW for out-of-pocket medical expenses related to pre-IVF fertility testing
- expanding the availability of New South Wales Government-supported IVF clinics to provide lower cost IVF treatments for around 6,000 women
- establishment of the first state-wide fertility preservation service for cancer patients at The Royal Hospital for Women, in partnership with the University of NSW.



INTERLOOP SCULPTURE, REPURPOSED ORIGINAL 1930'S ESCALATOR TREADS
BY ARTIST CHRIS FOX, WYNYARD RAILWAY STATION, SYDNEY

Photo credit: Department of Transport



TRANSPORT CLUSTER

TRANSPORT

MORE BUS SERVICES TO MEET GROWING DEMAND

- 14,000 extra weekly bus services across Sydney, Illawarra, Central Coast and the Lower Hunter.
- **\$67.9 million** over four years to improve bus services across 15 regional towns.

PLANNING FOR TWEED LIGHT RAIL

- Provide **\$1 million** to commence strategic planning for a future light rail between Tweed Heads and Coolangatta.

FASTER RAIL

- **\$295 million** over four years initial investment in the fast rail network, including improved alignment north of Mittagong, duplication between Berry and Gerringong, planning of a new alignment between Sydney and Woy Woy and planning work to improve the route to the Central West.

URBAN ROAD UPGRADE AND CONGESTION PROGRAM

New urban road projects across Sydney, the Central Coast and the Lower Hunter, including:

- **\$450 million** commitment to reduce traffic congestion at 12 pinch points across Sydney:
 - Pennant Hills Road / Carlingford Road, Carlingford
 - Forest Road and Stoney Creek Road, Beverly Hills
 - Forest Road at Boundary Road and Bonds Road, Peakhurst
 - Henry Lawson Drive at Rabaul Road and Haig Avenue, Georges Hall
 - Linden Street, between River Road and The Grand Parade, Sutherland
 - Princes Highway at Bates Drive, Kareela
 - Pennant Hills Road, between the M2 Motorway and Woodstock Avenue, Carlingford (Southbound)
 - The Horsley Drive / Polding Street, Fairfield

\$450 MILLION

total commitment to reduce congestion across major arterial roads and regional links



\$500 MILLION

to kick off the Fixing Local Roads program

REGIONAL & LOCAL ROADS

- **\$500 million** over five years for the Fixing Local Roads program to assist regional councils with repairing, maintaining and sealing council roads.
- Establish a process to transfer up to 15,000 kilometres of council-owned regional roads back to the state.
- Regional and local road commitments include:
 - **\$17.6 million** towards sealing and re-sealing roads in the Snowy Monaro region
 - \$17 million to Kempsey Shire Council and Port Macquarie-Hastings Council for upgrades to Maria River Road between Port Macquarie and Crescent Head
 - **\$12.5 million** to seal Pooncarie Road in Menindee from the Regional Growth Fund (with joint funding of \$12.5 million from the Commonwealth Government)
 - **\$10 million** to Kempsey Shire Council for upgrades to Armidale Road, Kempsey
 - **\$10 million** to Richmond Valley Council to upgrade Woodburn-Coraki Road, Coraki
 - **\$10 million** for Captains Flat Road near Queanbeyan
 - **\$10 million** to seal, reseal, stabilise pavement, install new guardrail and drainage on Towamba and Burragate Roads
 - **\$10 million** to upgrade Werris Creek Road near Duri
 - Over **\$8 million** towards sealing Rangari Road between Manilla and Boggabri
 - **\$5.6 million** to Griffith City Council to seal Boorga and Dickie Roads
 - **\$4.4 million** to upgrade Federation Way in Albury from the Fixing Country Roads program
 - **\$3 million** to Port Macquarie-Hastings Council for upgrades to Waitui Road
 - **\$0.3 million** to Queanbeyan-Palerang Regional Council to improve Araulen Road at Braidwood
 - Funding to Port Stephens Council for Raymond Terrace Road upgrade works



CHERRYBROOK METRO STATION
 Photo credit: Sydney Metro

TRANSPORT CLUSTER CONT.

TRANSPORT

- Cumberland Highway at The Horsley Drive, Smithfield
- The Horsley Drive at Nelson Street, Fairfield
- traffic lights at the intersection of Baker Street and Pennant Hills Road
- Victoria Road widening at the West Ryde rail bridge between West Parade and Anzac Avenue.
- **\$695 million** commitment for technology upgrades on the road network, including:
 - upgrade traffic light systems at 500 intersections across New South Wales
 - Smart Motorways rollout between Sydney and Gosford, and planning for major freeways
 - development of smart parking and clearway signage
 - new drones to better respond to traffic incidents and virtual in-car messaging to better alert drivers.
- Urban Road upgrades including:
 - **\$387 million** to upgrade the Central Coast Highway between Bateau Bay and Wamberal
 - **\$260 million** to upgrade Mulgoa Road from Jeanette Street to Glenmore Parkway, and Jamison Road to Blaikie Road
- **\$220 million** to upgrade Mamre Road between the M4 Motorway and Erskine Park Road
- a further **\$205 million** to duplicate Nelson Bay Road between Williamtown and Bobs Farm, in addition to \$70 million previously allocated for improvements to Nelson Bay Road
- **\$188 million** to deliver the Fingal Bay Link Road
- **\$20 million** for a westbound on ramp to the M4 Motorway from Roper Road
- **\$16 million** for design and development of Spring Farm Link Road Stage 2
- **\$2 million** for planning to upgrade the Toongabbie Rail Bridge.

ELECTRIC BUSES TRIAL

- **\$10 million** over two years to trial 10 electric buses at Randwick Bus Depot, as part of the Government's Electric and Hybrid Vehicle Plan.

FIXING COUNTRY BRIDGES

- **\$500 million** over five years for the Fixing Country Bridges program, to repair and replace poor quality timber bridges in rural and regional communities.

UPGRADING 68 MORE TRAIN STATIONS

- Upgrade a further 68 train stations under the Transport Access Program and Sydney Metro City and Southwest, to make train stations more accessible, including new lifts, ramps and footbridges.

REDUCE THE WEEKLY OPAL TRAVEL CAP

- **\$69.6 million** over four years to reduce the Opal Weekly Travel cap by approximately 20 per cent to \$50 a week for adults and \$25 per week for child/youth and concession travel from 1 July 2019 for all train, bus, ferry and light rail customers. This will benefit approximately 55,000 commuters with savings of up to \$686 a year.

ACCELERATING SYDNEY METRO WEST

- **\$6.4 billion** commitment over four years, for planning and the acceleration of construction of Sydney Metro West, to provide a faster, easier and more reliable journey between Greater Parramatta and the Sydney CBD in around 20 minutes.

NEW REGIONAL ROAD PROJECTS ACROSS NEW SOUTH WALES

Princes Highway

- **\$960 million** for new upgrades to the Princes Highway between Nowra and the Victorian Border, as the first part of duplicating the highway across the next 20 years:
 - duplicate sections between Jervis Bay Road and Sussex Inlet Road
 - build the Moruya Bypass
 - start detailed planning work for the Milton and Ulladulla Bypass and upgrades between Burrill Lake and Batemans Bay.

Great Western Highway

- **\$2.5 billion** for the first stages of the duplication of the Great Western Highway between Katoomba and Lithgow:
 - construction to commence on:
 - Medlow Bath Upgrade
 - Mount Victoria Bypass
 - upgrade between Jenolan Caves Road and South Bowenfels.
 - design and planning to begin on:
 - Katoomba to Medlow Bath
 - Medlow Bath to Blackheath
 - Blackheath Bypass Tunnel
 - Blackheath to Mount Victoria.

Additional regional road upgrades

- Upgrades on the following highways:
 - **\$266 million** to deliver the New England Highway bypass of Muswellbrook

- **\$200 million** to reduce Newell Highway flooding between West Wyalong and Forbes **\$20 million** each for upgrades to the Kings Highway and Monaro Highway
- **\$18 million** for overtaking lanes on the Mitchell Highway between Dubbo and Narromine
- **\$11.2 million** for upgrades to the Bruxner Highway, including at Alstonville and Lismore
- **\$4.5 million** to address flooding at the Washpool causeway on the Gwydir Highway, 15 kilometres east of Moree
- **\$3 million** for planning the New England Highway (Goonoo Goonoo Road) duplication at Tamworth between Calala Lane and Jack Smyth Drive.
- Major road upgrades including:
 - **\$60 million** for duplication of Ocean Drive at Port Macquarie
 - **\$50 million** to upgrade Waterfall Way
 - **\$27 million** for design and land acquisition for the Dunns Creek Road corridor
 - **\$20 million** to seal Bobeyan Road
 - **\$15 million** for the Taree Northern Gateway
 - **\$3 million** for the upgrade of Main Street, Hay.



\$6.4

BILLION

over four years for planning and the acceleration of construction of Sydney Metro West



\$69.6

MILLION

over four years to reduce the Opal Weekly Travel Cap



\$300 MILLION

to provide additional car spaces through the Commuter Car Parking Program

NEW COMMUTER CAR PARKING

- **\$300 million** over four years to provide additional car spaces through the Commuter Car Parking Program at the following train stations:
 - Edmondson Park
 - Emu Plains
 - Engadine
 - Jannali
 - Leppington
 - Revesby
 - Riverwood
 - Schofields
 - Tuggerah
 - Warwick Farm
 - West Ryde.
- As well as additional car parking for bus commuters at Winston Hills.
- A new commuter car park will also be delivered at Hornsby.



B LINE BUS

Photo credit: Transport NSW

TRANSPORT CLUSTER CONT.

TRANSPORT

OPAL PARK AND RIDE EXPANSION

- 10 train station commuter car parks to be converted to Opal Park and Ride car parks, to keep spaces available for public transport users, at:
 - Campbelltown
 - Gosford
 - Holsworthy
 - Hornsby
 - Jannali
 - Kiama
 - Penrith
 - Revesby
 - Sutherland
 - Warwick Farm.

MORE EXPRESS TRAINS FOR WESTERN SYDNEY

- Deliver an additional eight train express services on the T1 Western Line across the morning and evening peak periods on weekdays, adding over 35,000 extra seats each week.

CONNECTING RURAL AND REGIONAL COMMUNITIES

- Trial 13 new public transport routes (bus and train) to connect 44 isolated communities across regional New South Wales to a major centre or city.

REGIONAL SENIORS TRANSPORT CARD

- A Regional Seniors Transport Card providing \$250 per year in 2020 and 2021 towards fuel or taxi travel from regional providers or pre-booked NSW TrainLink tickets for aged pensioners and Commonwealth Seniors Health card holder living in regional New South Wales.

TRANSPORT DISABILITY SUBSIDIES

- **\$173 million** over four years for transport disability subsidies to extend the Taxi Transport Subsidy Scheme and the Wheelchair Accessible Taxi Driver Incentive Scheme.

MORE CYCLING AND PEDESTRIAN INFRASTRUCTURE

- **\$256 million** over four years towards new walking and cycling infrastructure projects across the state to make walking and cycling a more convenient, safer and enjoyable option that benefits everyone.

MORE TRAINS, MORE SERVICES

- Continue delivery of the More Trains, More Services program, including providing increased rail services on the Illawarra, Airport and South Coast Lines. Including:
 - fast-tracking the delivery of another 17 new air-conditioned Waratah Series 2 trains from 2020, in response to growing demand across the Sydney Trains network
 - new train carriages and extra seats on the South Coast line to address increased customer demand during the week and on the weekends

- additional services on the T4 Illawarra Line after 10pm, seven days a week, to reduce wait times on platforms late at night.

ACCESSIBILITY IMPROVEMENTS FOR FERRY WHARVES

- Improve accessibility at Taronga Zoo, South Mosman, North Sydney and Manly ferry wharves.

HELPING KIDS GET TO SCHOOL SAFELY

- **\$18.5 million** over four years to provide an additional 300 School Crossing Supervisors across New South Wales primary schools to help children get to and from school safely each day.

PLANNING FOR THE COFFS HARBOUR BYPASS

- Conduct further community consultation on the design of the Coffs Harbour bypass.

NEW REGIONAL RAIL FLEET

- **\$2.8 billion** commitment towards the design, build and maintenance of the new regional rail fleet, along with the new purpose built maintenance facility in Dubbo, to create better, safer, more comfortable and reliable services for customers travelling long distances.

REVIEW SURPLUS LAND ACQUIRED UNDER WESTCONNEX

- Review the sale of approximately 4,000 square metres of surplus land at Homebush, acquired as part of the WestConnex motorway project.

FARE FREEZE FOR GOLD OPAL CARDS

- Freeze fares for a further four years for Gold Opal Card holders at a maximum of \$2.50 per day.

HEATHCOTE ROAD UPGRADE

- Widen a two-kilometre section of Heathcote Road at Holsworthy to improve traffic flow and road safety.

EXPRESS TRAIN SERVICES BETWEEN GRANVILLE AND THE CITY

- Provide new return express train services between Granville and the City.

RAPID TRANSPORT OPTIONS FOR WOLLONDILLY AND THE SOUTHERN HIGHLANDS

- Investigate new rapid public transport options to connect communities in Wollondilly and the Southern Highlands with Sydney's electrified rail network. New routes to be explored will include Bargo, Picton and Wilton to Campbelltown, as well as Moss Vale, Bowral and Mittagong to Campbelltown.

PLAN AN EXTENSION OF THE SYDNEY METRO CITY AND SOUTHWEST LINE

- Begin planning an extension of Sydney Metro City and Southwest between Bankstown and Liverpool.

ADDITIONAL FERRY SERVICES AND VESSELS

- Create 400 additional weekly ferry services across the network over the next two years.

NORTH SOUTH METRO RAIL LINK TO THE NEW WESTERN SYDNEY AIRPORT

- Invest over **\$2 billion** over four years towards the New South Wales and Federal Government funded North South Metro Rail Link connecting to Western Sydney Airport, with construction expected to start in 2021 and be completed in 2026 in time for the opening of the airport.

UPGRADE PROSPECT HIGHWAY AND MEMORIAL AVENUE

- **\$300 million** commitment to commence upgrading the Prospect Highway and Memorial Avenue to reduce congestion and to help meet future demands on this corridor.

EASING CONGESTION AND CONNECTING COMMUNITIES

- **\$32.2 million** from the Housing Acceleration Fund for planning and design of eight road projects across Sydney and regional New South Wales.

NORTHERN BEACHES BUSES

- Deliver a new direct bus service linking Pittwater and Frenchs Forest via the Wakehurst Parkway and start work on developing a turn up and go express bus service linking Dee Why and Chatswood.



\$18.5
MILLION

over four years to provide an additional 300 School Crossing Supervisors



\$2
BILLION

over four years for the North South Metro Rail Link connecting Western Sydney Airport



\$300
MILLION

total commitment to commence upgrading the Prospect Highway and Memorial Avenue



NSW POLICE OFFICER
Photo credit: NSW Police



STRONGER COMMUNITIES CLUSTER

FAMILY AND COMMUNITY SERVICES AND JUSTICE

MULTICULTURAL AGED CARE FACILITIES

- **\$32.5 million** over four years for multicultural community organisations to support the construction and refurbishment of aged care facilities and senior support centres.

SUPPORT FOR MULTICULTURAL COMMUNITY FESTIVALS AND PROJECTS

- **\$12.5 million** over four years for multicultural community organisations and associations to support multicultural festivals, events and community projects in New South Wales.

SENIOR SAVERS CARD

- Introduce the new Senior Savers Card to all New South Wales residents over the age of 60, providing more people with access to discounts on products and services provided through the Seniors Card program.

HALVE HOMELESSNESS BY 2025

- Commit to halve street homelessness across the state by 2025, as part of the global agreement signed by the Government and service providers.

NEW QUEANBEYAN COURTHOUSE

- Provide **\$18 million** in new investment to upgrade the Queanbeyan Courthouse.

GRANTS TO BUSINESSES TO INSTALL CCTV CAMERAS

- **\$5 million** from 2019-20 to provide community grants for small businesses and community organisations in Western and South-Western Sydney to install CCTV security.

ENHANCING PUBLIC SECTOR INTEGRITY

- **\$2.7 million** in 2019-20 to establish the new Public Sector Prosecution Unit, comprising a team of senior lawyers to prosecute public officials for corruption. The Unit will sit within the Office of the Director of Public Prosecutions.

DRUG SUPPLY PROHIBITION ORDERS

- Commence a two-year pilot of Drug Supply Prohibition Orders, which give police more search powers for drug-related crimes.

HELPING VETERANS AND EMERGENCY WORKERS

- Extra support for The Buttery, Northern Rivers to help local veterans and emergency workers to tackle post-traumatic stress disorder (PTSD) and associated substance misuse, by delivering an innovative program called COPE that will treat both conditions concurrently.

SURFERS RESCUE 24-7 COURSE

- **\$1 million** over four years to expand the Surfers Rescue 24-7 course.

VOLUNTEER RESCUE SUPPORT

- **\$18.8 million** over four years to support the Volunteer Rescue Association, including 30 new rescue vehicles and upgraded communications and equipment across 58 locations.

FUNDING TO MARINE RESCUE NSW

- **\$37.6 million** over four years to support Marine Rescue NSW to expand its radio network and provide 38 new rescue vessels to improve safety on the State's waterways.

WATER SAFETY FOR COMMUNITIES

- Provide **\$90,000** from the Water Safety Fund Community Grants Program to the Royal Life Saving Society for swim programs supporting refugees and migrants.

FUNDING TO SURF LIFE SAVING NSW

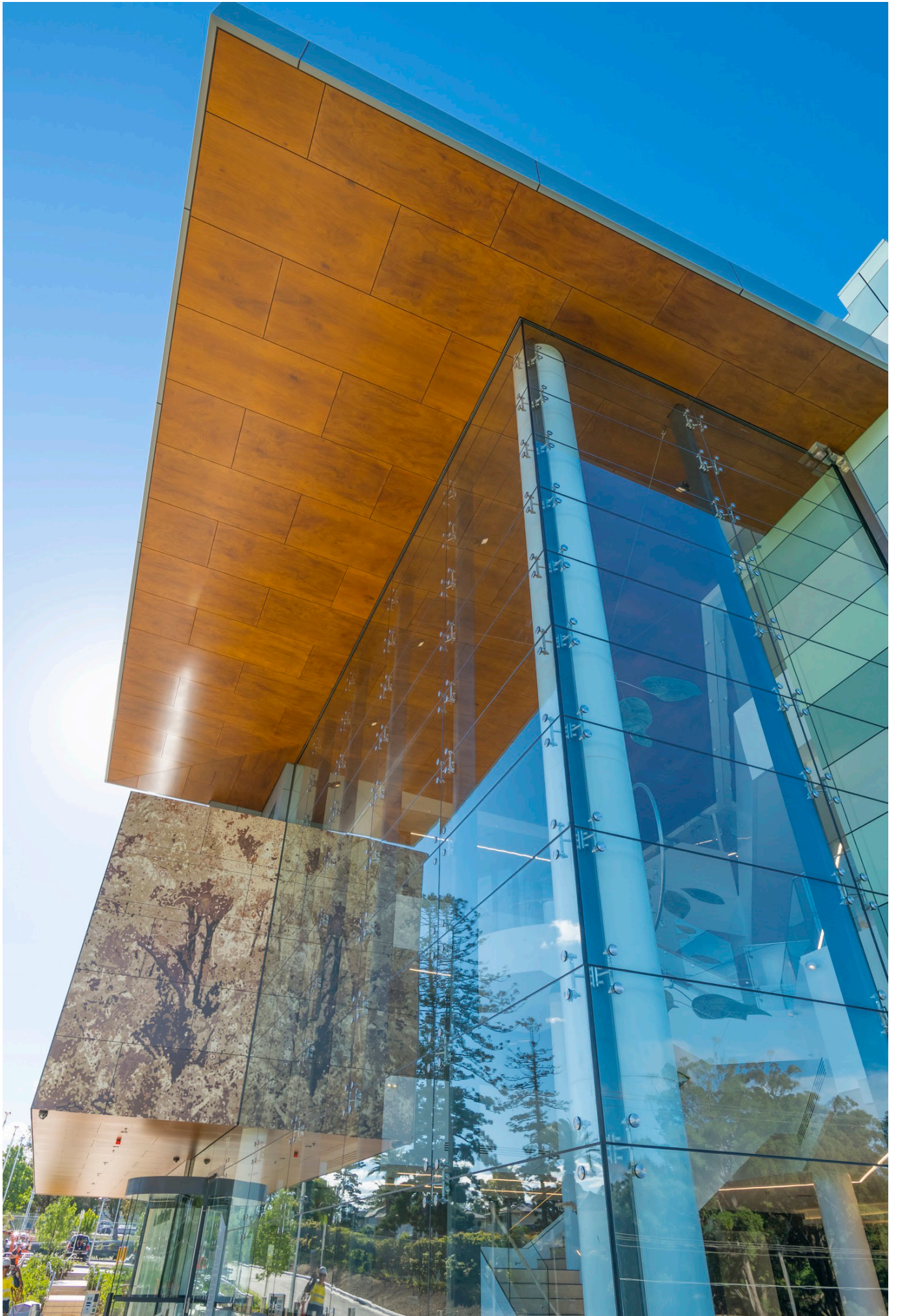
- **\$16 million** over five years to Surf Life Saving NSW to purchase new rescue vehicles, improve community engagement and install 10 new Emergency Response Beacons.

\$32.5
MILLION

to support the construction and refurbishment of aged care facilities

\$18.8
MILLION

over four years to support the Volunteer Rescue Association



FORENSIC MEDICINE & CORONERS COURT COMPLEX, LIDCOMBE

Photo credit: Department of Justice

STRONGER COMMUNITIES CLUSTER CONT.

NSW POLICE FORCE

DELIVER 1,500 NEW POLICE

- Invest in 1,500 new police to increase the State's crime fighting capability and keep the community safe.

NEW AND UPGRADED POLICE STATIONS

- **\$65 million** from 2020-21 to 2022-23 to build new police stations in Bega (\$13 million), Goulburn (\$25 million), the Jindabyne area (\$13 million) and major upgrades to police stations at Bourke (\$7 million) and Bathurst (\$7 million).

DUBBO REGIONAL EDUCATION AND TRAINING CENTRE

- **\$35 million** from 2020-21 to 2022-23 to build a major new state-of-the-art police education and training facility at Dubbo.

NEW BUS FOR SHOALHAVEN PCYC

- **\$40,000** for a new bus at the Shoalhaven Police Citizens Youth Clubs (PCYC).



**\$65
MILLION**

*for new and
upgraded police
stations*

OFFICE OF SPORT

DOUBLE ACTIVE KIDS REBATE

- **\$291.1 million** over four years to expand the Active Kids program from one to two \$100 vouchers per child each year to encourage children's participation in organised sport and physical activity outside school hours.

BROOKVALE OVAL UPGRADE

- **\$20 million** towards the upgrade of Brookvale Oval as part of the Centres of Excellence package. The upgrade will include a 3,000 seat grandstand and a new centre of excellence with gyms, medical facilities, changing rooms, a hydrotherapy centre and community facilities.

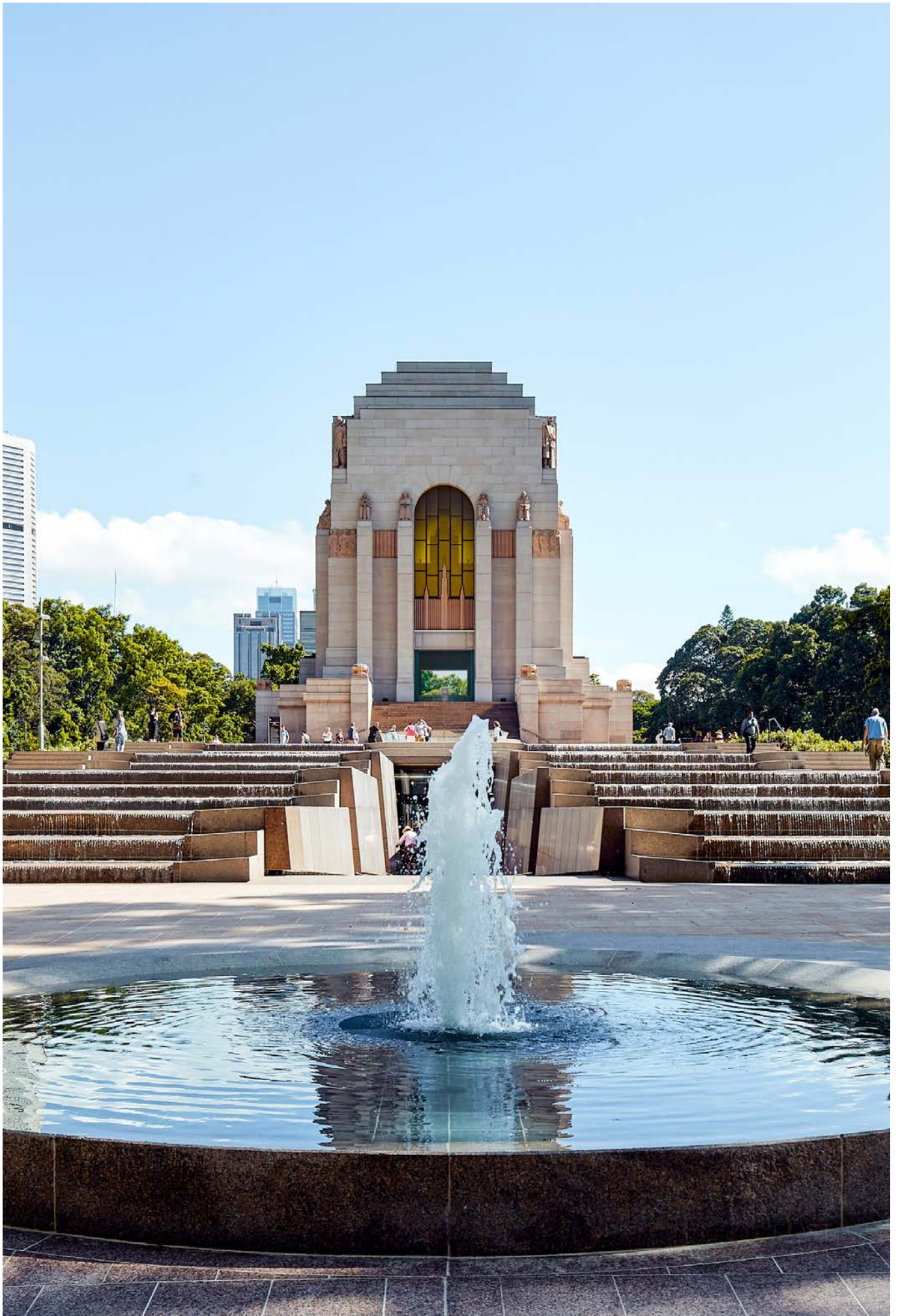
UPGRADE MARGARET DONOGHUE OVAL

- **\$590,000** to build new female change rooms and toilets, and a match day team room for the Queanbeyan Tigerettes at Margaret Donoghue Oval. The funding is in addition to the \$450,000 delivered for upgrades to the venue's lights in 2018.



**\$291.1
MILLION**

*to double the
Active Kids
Rebate*



ANZAC MEMORIAL, SYDNEY
Photo credit: Peter Bennetts



PLANNING, INDUSTRY AND ENVIRONMENT CLUSTER

PLANNING, INDUSTRY AND ENVIRONMENT

REGIONAL DIGITAL CONNECTIVITY PROGRAM

- **\$400 million** in capital funding from the \$4.2 billion Snowy Hydro Legacy Fund for the Regional Digital Connectivity Program to provide mobile black spot towers and data centres to improve internet connectivity and reliability in the State's regions.

IMPROVING INFRASTRUCTURE AND SERVICES IN ABORIGINAL COMMUNITIES

- **\$55 million** over four years under the Roads to Home Program to deliver local road infrastructure upgrades and subdivision in collaboration with Local Aboriginal Land Councils in ten Aboriginal communities across New South Wales, to improve access and increase economic opportunities. Communities include:
 - Bellwood Reserve, Nambucca Shire
 - Bowraville Reserve, Nambucca Shire
 - Cabarita Reserve, Mid Coast
 - Gingie, Walgett Shire
 - Gulargambone Top, Coonamble Shire
 - La Perouse Mission, Randwick

- Namoi Reserve, Walgett Shire
- Narwan Village, Armidale Dumaresq Shire
- Three Ways, Griffith
- Wallaga Lake Koori Village, Eurobodalla Shire.

ESTABLISH A REGIONAL YOUTH PORTFOLIO

- Establish a Minister for Regional Youth, who will give voice to young people in regional areas, including delivery of a Regional Youth Strategy, establishment of a Regional Youth Taskforce and an Office for Regional Youth.
- **\$100 million** allocated for round three of the Stronger Country Communities Fund for projects and programs in the regions, including \$50 million aimed at supporting young people.

WILD DOG EXCLUSION FENCE

- **\$37.5 million** over three years to extend the Wild Dog Exclusion Fence in western New South Wales to prevent wild dogs entering the state.

**\$400
MILLION**

from the Snowy Hydro Legacy Fund for the Regional Digital Connectivity program

**\$55
MILLION**

to deliver local road upgrades in Aboriginal communities



**\$150
MILLION**

for acquisition of green and open spaces

OPEN SPACES AND GREENER SYDNEY

- **\$150 million** over five years for the acquisition and embellishment of green and open spaces to improve the liveability of New South Wales communities as part of the Government's Strategic Open Spaces program.
- As part of this package, **\$50 million** will be used to turn existing Government-owned land into new and upgraded parks, including:
 - **\$10 million** for the Nepean River Parklands in Penrith
 - **\$10 million** for George Kendall Riverside Park at Ermington
 - **\$9 million** for walking tracks and bike trails in Frenchs Forest
 - **\$6 million** for a new running track or playground at Kempt Field in Hurstville
 - **\$5 million** for 60 hectares of new parklands and green space in Appin
 - **\$4 million** for new open space at Leppington
 - **\$4 million** to add nature trails to open space in Beaumont Hills
 - **\$2 million** for Carrawood Oval in Carramar.
- **\$100 million** to secure new parks to be developed across Sydney. This funding will be used to purchase open space in strategic locations to improve community access to green space, such as new open space in Newport for the residents of Pittwater.



TARONGA ZOO LEARNING HUB CLASSROOM
 Photo credit: Department of Planning,
 Industry and Environment

PLANNING, INDUSTRY AND ENVIRONMENT CLUSTER CONT.

PLANNING, INDUSTRY AND ENVIRONMENT

DOPPLER RADARS

- **\$24.4 million** to deliver three new Doppler radars in western New South Wales. The new radar stations will provide real time rainfall data and wind observations to 34 local government areas in Western New South Wales, covering almost 30 per cent of the state by 2022.

PARTNERING WITH LANDCARE COMMUNITIES IN NEW SOUTH WALES

- **\$22.4 million** over four years to expand the Local Landcare Coordinator Initiative, which will see a continuation of an ongoing partnership between Local Land Services and Landcare NSW, supporting ongoing sustainability and oversight of Landcare NSW.

NSW KOALA STRATEGY

- Continue to deliver the **\$45 million** New South Wales Koala Strategy, including setting aside more than 24,000 hectares of new koala reserves.

ESTABLISH AN INDEPENDENT AGRICULTURE COMMISSIONER

- **\$2 million** over four years to establish an independent Agriculture Commissioner, with legislated powers to protect the Right to Farm, allowing farmers to undertake lawful agricultural practices whilst reducing conflict with other land users.

SUPPORTING DAIRY FARMERS

- **\$3.5 million** over four years to establish a Dairy Business Advisory Unit to continue industry support services and identify immediate and necessary actions for the sector.

INVESTING IN THE FORESTRY INDUSTRY

- **\$40 million** to support the forestry industry, including \$34 million as part of round two of the New South Wales Forest Industries Innovation Fund loan scheme and \$3.5 million to support training and certification.

ESTABLISH THE SYDNEY QUANTUM ACADEMY

- **\$15.4 million** over five years to create the Sydney Quantum Academy, putting New South Wales at the forefront of the quantum computing industry, in partnership with the State's leading universities.

IMPROVING THE ACCESSIBILITY OF RECREATIONAL FISHING

- Improve the accessibility of recreational fishing in Batemans Bay and Batemans Marine Park by fast-tracking consultation on a range of issues and creating a new large recreational fishing platform.

EMPOWERING HOMES PROGRAM

- A new program to support the rollout of solar panels and battery systems for up to 300,000 households across New South Wales, improving energy reliability and reducing the cost of living.

RENEWABLE ENERGY BOOST

- **\$30 million** over four years to co-fund new on-demand clean energy projects with the private sector through the Emerging Energy Program, including \$10 million to pilot initiatives to recycle and re-use materials in solar panels and battery systems.

ROLL-OUT OF SOLAR PANELS ON GOVERNMENT BUILDINGS

- Accelerate the roll-out of solar panels on government buildings, such as schools and hospitals, with a target to reach 55,000 megawatt hours per year by 2024.

FINANCIAL RELIEF ON POWER BILLS FOR INDEPENDENT RETIREES

- Introduce an annual \$200 energy rebate from 1 July 2019 for eligible independent retirees to meet cost of living pressures.

ESTABLISH A MINISTER FOR PUBLIC SPACES

- Establish a Minister for Public Spaces who will have responsibility for enhancing and expanding the State's parks, gardens and open spaces, ensuring that there is sufficient open space across New South Wales and that public spaces are welcoming and attractive.

PRESERVING LAND AT WEST RYDE

- Preserve land at West Ryde that is not required for Sydney Water operations for community use.

PURCHASE BLUES POINT RESERVE

- Purchase One Henry Lawson Ave, McMahons Point, to bring the whole Blues Point Reserve into public ownership.

PROTECTING CROWN LAND FOR THE PUBLIC INTEREST

- Further strengthen legislation to ensure Crown Land reserved for recreational purposes cannot be sold, leased or change purpose without approval by the Minister, ensuring changes are in the public interest.

UPGRADING SYDNEY MOTORSPORT PARK

- **\$33.4 million** to implement the New South Wales Motor Sport Strategy, including a Motor Sport Centre for Excellence, installation of permanent lighting at Sydney Motorsport Park and upgrades to the Sydney International Dragway.

ADDITIONAL RECREATIONAL SPACES IN WESTERN SYDNEY PARKLANDS

- **\$157 million** over four years to undertake improvement works at Western Sydney Parklands, including works at Bungarribee Park, cycle and walking tracks, native tree planting, picnic and barbecue areas and additional car parking.

INFRASTRUCTURE WORKS AT MOUNT PENANG PARKLANDS

- **\$16 million** to deliver a comprehensive package of essential infrastructure works at Mount Penang Parklands, including road and footpath upgrades and water and sewer provision.

IMPROVING ACCESS TO NATIONAL PARKS

- **\$149.5 million** over four years to improve access to New South Wales national parks, through upgrading and extending walking trails, improving visitor infrastructure and facilities and introducing online and digital tools for virtual tours.



\$22.4
MILLION

*to expand the
Local Landcare
Coordinator
Initiative*



\$149.5
MILLION

*to improve access
to NSW National
Parks*



WATTAMOLLA BEACH

Photo credit: Department of Planning, Industry and Environment

PLANNING, INDUSTRY AND ENVIRONMENT CLUSTER CONT.

PLANNING, INDUSTRY AND ENVIRONMENT

NEW SHARED TRAIL FOR JINDABYNE

- **\$11.8 million** to construct a Jindabyne shared cycling and walking trail.

CREATING A NEW NATIONAL PARK NEAR TUGALONG STATION

- Establish a new national park centred around Tugalong Station to ensure that the vital koala wilderness area is preserved.

REVIEW THE PORT STEPHENS-GREAT LAKES MARINE PARK

- Conduct an immediate review of the Port Stephens-Great Lakes Marine Park.

BOOST DROUGHT SUPPORT FUNDING

- **\$350 million** added to the Farm Innovation Fund, which provides concessional interest rate loans to primary producers to support farming communities affected by the drought, bringing the Fund to \$1 billion and the total investment in drought support to over \$1.8 billion. The Farm Innovation Fund will also be accessible to commercial fishers and aquaculture businesses.

WATER SECURITY FOR NEW SOUTH WALES

- Develop plans for projects to improve water security in regional communities, including fast tracking regional water strategies, investigating a pipeline from Lostock Dam to Glennies Creek and **\$32 million** over three years to

investigate the raising of the Wyangala Dam (as part of a \$650 million commitment) with environmental and economic studies to commence this year.

- Investigate potential mass water infrastructure projects that will drought-proof Eastern Australia in the spirit of the Bradfield Scheme, contingent on matched funding from the Commonwealth and other states.

GREAT ARTESIAN BASIN INFRASTRUCTURE INVESTMENT (GABII) PROGRAM

- **\$13 million** over four years to rehabilitate high priority free flowing bores and drains in the Great Artesian Basin to enhance reliability of water supply to reduce the impact of drought.

IMPROVEMENTS TO BELLINGEN WASTEWATER TREATMENT PLANT

- **\$9.9 million** to the Bellingen Shire Council from the Growing Local Economies fund for the Bellingen Wastewater Treatment Plant to replace existing onsite sewage management systems with connections to the Council's sewerage network.

INVESTING IN WATER AND SEWER INFRASTRUCTURE PROJECTS

- **\$7.5 million** from the Housing Acceleration Fund to the Central Coast Council for vital water and sewer infrastructure projects in the Central Coast.
- **\$3.5 million** from the Safe and Secure Water Program to the Eurobodalla Shire Council for new water and sewage systems at Nelligen on the South Coast.

REFRESH VAUCLUSE DIAMOND BAY

- Deliver the Refresh Vacluse Diamond Bay project to redirect untreated wastewater away from three ocean outfalls at Vacluse and Diamond Bay and transfer it to the Bondi Wastewater Treatment Plant.

WATER QUALITY INVESTIGATIONS AT TERRIGAL BEACH AND TUGGERAH LAKES

- **\$700,000** to investigate water quality at Terrigal Beach and Tuggerah Lakes.

PROTECTING SURFSIDE FROM COASTAL EROSION

- Commit **\$5.3 million** to fund engineering studies into options for managing coastal erosion on Batemans Bay including Wharf Road, Surfside and Long Beach, and build the best infrastructure solution arising from the engineering studies.

SPECIAL ACTIVATION PRECINCTS

- **\$20 million** from Snowy Hydro Legacy Fund to investigate Special Activation Precincts in Parkes, Wagga Wagga and Williamstown and establish a Regional Growth Development Corporation.

ADDITIONAL INVESTMENT FOR THE VALLA GROWTH AREA

- Invest **\$3 million** from the Growing Local Economies Fund toward the first stage of development of the new commercial and industrial precinct in the Valla Growth Area to be completed in 2020.



\$350
MILLION

*added to the
Farm Innovation
Fund*



\$8
MILLION

*to establish Country
Universities Centres
across regional NSW*

EXPANDING COUNTRY UNIVERSITIES CENTRES

- **\$8 million** over four years to establish at least another five Country Universities Centres across regional New South Wales. This investment will be used to:
 - open at least five new regional hubs, established in collaboration with local communities, taking the number of regional centres to 13 across the state
 - expand on existing and developing Centres in Cooma, Broken Hill, Goulburn, Moree/Narrabri, Grafton and Griffith/Leeton
 - provide students at Country University Centres access to specialised services and support currently unavailable via traditional distance education
 - build new university centres in regional locations where currently there are no tertiary facilities.





CUSTOMER SERVICE CLUSTER

CUSTOMER SERVICE

NUCLEAR MEDICINE AND TECHNOLOGY HUB

- **\$12.5 million** over five years to establish a Nuclear Medicine and Technology Hub at Lucas Heights in partnership with the Australian Nuclear Science and Technology Organisation to develop cutting edge treatments.

RETIREMENT VILLAGE REFORMS

- Introduce time limits on when retirement villages can charge for general services and when they must sell or buy back a unit after the departure of a resident.

MAKING IT EASIER TO INTRODUCE RENEWABLE ENERGY

- Lower the voting threshold for renewable energy projects in strata buildings from 75 to 50 per cent, to more easily install solar panels, battery storage and electric vehicle charging points in strata buildings.

FINANCIAL RELIEF FOR REGULAR TOLL ROAD USERS

- Introduction of half-priced rego from 1 July 2019, for drivers who spend \$15 or more a week on tolls. Drivers who spend \$25 or more a week on tolls will continue to receive free rego.

PROVIDING FINANCIAL RELIEF TO HOUSEHOLD GAS USERS

- Expand the Energy Switch service to include household gas.

REFORM THE BUILDING AND CONSTRUCTION INDUSTRY

- Appoint a Building Commissioner to act as the consolidated building regulator in New South Wales with responsibilities to licence and audit practitioners.

\$12.5
MILLION

to establish a Nuclear Medicine and Technology Hub

1/2
PRICE

rego for drivers who spend \$15 or more a week on tolls



Expand footprint of Service NSW across the State

EXPANDING SERVICE NSW CENTRES

- Roll out 10 new Service NSW centres across Metropolitan Sydney. New locations include:
 - Merrylands
 - Randwick
 - Revesby
 - Northmead
 - Engadine
 - Glenmore Park
 - Prestons/Edmondson Park
 - Roselands
 - North Sydney
 - Schofields.
- Roll out four one-stop shop Service NSW buses servicing communities throughout the State.





SERVICE NSW MOBILE SERVICE CENTRE
Photo credit: Salty Dingo

CUSTOMER SERVICE CLUSTER CONT.

PARTNERING WITH CLUBS

Helping Clubs in NSW through continuing to support the ClubGRANTS scheme, including providing a grant to Yass Valley Council to upgrade the Coronation Park Playground and providing more support for clubs during drought, modernising the *Registered Clubs Act*, partnering with clubs for education and training and regional job creation, introducing new responsible gambling policies and supporting the establishment of new clubs.

IMPROVING QUAD BIKE SAFETY FOR NEW SOUTH WALES FARMERS

- **\$2.8 million** over two years to extend the quad Bike Safety Improvement Program, including rebates for farmers who prefer drones as alternatives to quad bikes.



\$2.8 MILLION

extend Quad Bike Safety Improvement program

SUPPORTING SMALL BUSINESS

Small business cost saving package

- \$300 million in workers compensation insurance premium discounts over three years for 280,000 employers via Insurance and Care NSW, delivering an average discount of 8 per cent, and maximum of 12.5 percent, for employers with the safest workplaces.
- Continue to provide payroll tax relief by progressively increasing payroll tax brackets to \$1 million in 2021-22, with up to 38,000 businesses saving up to \$8,175 off their tax bill
- Giving small businesses and tradies a head start in procurement by requiring NSW Government agencies to consider small business suppliers for everything they buy.
- Provide small business with access to the NSW Government's Energy Switch program.

Easy to do Business program

- Reduce red tape and enhance the Easy to do Business program through work undertaken by the NSW Productivity Commissioner, including:
 - a review of government fees and charges on small businesses.
 - enable businesses to opt-in to receive communications about policy or regulatory changes affecting their industry.
 - streamlining motor vehicle registrations for individuals and businesses that own multiple vehicles, by providing an option for all registrations to fall due on the same day.



WESTERN SYDNEY AEROTROPOLIS

Photo credit: Department of Planning, Industry and Environment



TREASURY CLUSTER

TREASURY

250,000 NEW JOBS IN THE NEXT FOUR YEARS

- Create 250,000 new jobs over the next four years from 2019.

WESTERN SYDNEY START-UP HUB FOR SMALL BUSINESSES

- **\$6.6 million** over four years to establish the Western Sydney Start-up Hub, providing subsidised and affordable work spaces and programs for businesses and startups in Western Sydney, with operations starting 1 July 2020.

PROCUREMENT SAVINGS

- Treasury to coordinate the delivery of whole-of-government administrative and procurement savings over the next four years from 1 July 2019.



\$6.6

MILLION

over four years to establish the Western Sydney Start-up Hub



250,000

new jobs over the next four years

EMPLOYMENT PRECINCTS

More employment precincts to drive jobs, boost education and create innovation

SYDNEY INNOVATION AND TECHNOLOGY PRECINCT

Sydney is consolidating its position as a global hub for technology, investing in the creation of an innovation and technology precinct at Central-Eveleigh. The new Sydney Innovation and Technology Precinct will become the digital destination for all of Australia with thousands of people working and learning, enhancing the State's capability and assuring the jobs of the future.

AGRIBUSINESS PRECINCT IN THE WESTERN SYDNEY AEROTROPOLIS

Establish an agribusiness precinct in the Western Sydney Aerotropolis which will contribute directly to 2,500 jobs and support up to 12,000 more. The precinct will include a series of high-tech farming and climate-controlled glasshouses that will produce fresh food and handle incoming produce from New South Wales farms for global export.

EDUCATION AND EMPLOYMENT PRECINCT

A new integrated Central Coast Education and Employment Precinct around Gosford CBD with increased education and job opportunities, creating 1,000 local jobs and up to 3,000 tertiary and vocational education opportunities.



ILLUMINARTE

Photo credit: Greater Sydney Commission



BEHIND THE SCENES ON LADIES IN BLACK WITH ANGOURIE RICE AND BRUCE BERESFORD

Photo credit: Lisa Tomasetti



PREMIER & CABINET CLUSTER

PREMIER & CABINET

SUPPORTING VISION AUSTRALIA

- **\$2 million** over four years for Vision Australia through the State Library of New South Wales, to enable the provision of expanded services and a greater selection of audio and braille books to the 126,000 people who are blind or have low vision.

ENHANCING PUBLIC SECTOR INTEGRITY MEASURES

- Require all members of Parliament to publish diary and overseas travel information and any third-party lobbyist representing a foreign state or controlled entity to disclose those links on the Lobbyist Register.



\$99.2 MILLION

developing local community initiatives

WESTERN PARKLAND CITY LIVEABILITY PROGRAM

- **\$99.2 million** over four years (including \$49.6 million from the Australian Government) towards developing local community initiatives under the Western Parkland City Liveability Program, a joint initiative with the Australian Government and various local councils. Key projects include:
 - **\$15 million** to develop three sport and recreation facilities in the Camden area
 - **\$15 million** to rejuvenate the town centres of Windsor, Richmond and South Windsor
 - **\$15 million** to transform the Regatta Park precinct in Penrith
 - **\$15 million** to deliver the Campbelltown Billabong Parklands, a landmark and iconic swimming lagoon at Apex Park, Bradbury
 - **\$15 million** to support Blue Mountains community initiatives
 - **\$13 million** towards building a community and recreational hub in Phillips Park, Lurnea
 - **\$9.4 million** to upgrade the Fairfield showgrounds
 - **\$1.9 million** towards improvements to support additional growth, improve access and promote healthy living, in Wollondilly Shire.



LOCAL COMMUNITIES

Delivery of local community projects providing grants to local councils and non-government organisations across New South Wales to support community engagement, local sporting organisations, local tourism and local economies. Local projects include:

SUPPORTING COMMUNITIES

- **\$25 million** to establish the Byron Bay Sustainable Tourism Fund to manage the impact of tourism on the region and locals.
- **\$11.6 million** to continue funding the Ability Links NSW disability program in 2019-20.
- **\$8 million** towards stage one of the North Coast Beaches Multi Purpose Community Centre in Woolgoolga.
- **\$7.5 million** towards the first stage of a new Australian Opal Centre in Lightning Ridge.
- **\$5 million** to Cabonne Council for a new library, community hall and learning centre in Molong.
- **\$4 million** towards to the Berry Rotary Club for the Berry kids playground.
- **\$3.4 million** to the Oxley Vale Lifelong Learning Centre to provide more appropriate spaces for activities undertaken by students, community groups and the elderly.
- **\$3.3 million** to commence construction of Grace's Place, a world-first residential recovery centre, to help children and young people through the trauma of losing a loved one due to homicide.
- **\$2 million** to Albury Local Council to support community engagement, local sporting organisations for young women, local tourism and local economies.
- **\$2 million** to provide improved security infrastructure for more than 30 Jewish places of worship, aged-care facilities and schools.
- **\$1.5 million** to upgrade Edward Bennett Park, Cherrybrook and make it an inclusive playspace.
- **\$1.5 million** grant to Lismore Council to support community activities.
- **\$207,000** to support churches in Granville, including St. Mary's Antiochian Orthodox Church in Mays Hill and St. Anthony's and

St. Paul's Coptic Orthodox Church in Guildford.

- **\$100,000** to replace the roof at St Joseph's Catholic Church and improve accessibility at St Mary & St Joseph's Coptic Orthodox Church in Oatley.
- **\$100,000** to the Animal Hospital in Lismore.
- **\$35,000** for equipment at the Koala Triage, Treatment and Pathology Clinic in Lismore.

INVESTING IN SPORT AND RECREATION

- **\$25 million** from the Growing Local Economies Fund for a purpose-built sporting precinct at Orange.
- **\$25 million** to Newcastle Basketball to build a new indoor sports stadium at Hillsborough.
- **\$15 million** to build a new sports hub in Cooma, including a synthetic athletic track and an indoor sports facility with three courts.
- **\$13.5 million** to the Bega Valley Shire Council to upgrade the Bega and Pambula Sporting Complexes and Merimbula Basketball Courts.
- **\$10 million** for the Coffs Harbour Recreational Boat Ramp.
- **\$10 million** to the Verge Street Fields (Kempsey Sporting Complex) Project.
- **\$10 million** to upgrade the Goulburn Aquatic and Leisure Centre.
- **\$9 million** to fully upgrade the Mark Taylor Oval in Waitara.
- **\$4.5 million** to the Southern Districts Football Association to upgrade Ernie Smith Reserve.
- **\$1.2 million** to Alstonville Football Club for the clubhouse and lighting redevelopment.
- **\$3.8 million** for a new Brunswick Heads Surf Club. **\$3.6 million** to upgrade Kingsford Smith Park, Ballina.
- **\$3.5 million** to expand the Hornsby Mountain Bike Trail.
- **\$3 million** to the Dubbo Rifle Club for a new purpose built shooting complex for approved target shooting disciplines.
- **\$3 million** to upgrade Tuncurry Golf Course.
- **\$3 million** to Bowraville Recreational club for the Bowraville Sport and Youth Hub.
- **\$3 million** to upgrade sporting fields at Parramatta Park.
- **\$3 million** to Penrith City Council to upgrade the synthetic running track, the oval, amenities and lighting at Parker Street Fields.
- **\$2.5 million** to Hornsby Shire Council for bushwalking trails.
- More than **\$2 million** to upgrade the sports grounds at Tahmoor and Picton.
- **\$2 million** for the redevelopment of Gladesville Oval and Reserve.
- **\$2 million** to upgrade the Oberon Football Ground and Fitness Park.
- **\$1.8 million** to Easts Rugby Club to upgrade facilities to improve equality for female athletes.
- **\$1.5 million** to upgrade the amenities block at Penrith Tennis Centre.
- **\$1.5 million** to Hornsby Shire Council for a synthetic pitch for the Northern Suburbs Football Association.
- **\$1.5 million** to Hornsby Shire Council to upgrade the Ron Payne Reserve at North Epping.
- **\$900,000** to Georges River Council for decontamination of the Oatley Bowling Club.
- **\$750,000** to Blue Mountains Council to upgrade amenities at Lapstone Oval.

- **\$750,000** to Canterbury Bankstown Council to upgrade sporting facilities for local sporting teams using Marco Reserve and provide a modern clubhouse.
- **\$750,000** to upgrade amenities and complete the second block at Leonay Oval.
- **\$500,000** to Penrith City Council to upgrade the Eileen Cammack Reserve.
- **\$400,000** towards a new clubhouse and other amenity upgrades at the Hammondville Oval, including storage facilities, change rooms for female participants and disability bathrooms.
- **\$200,000** to Mid Coast Council to upgrade Myall Lakes Tennis Centre.

LOCAL INFRASTRUCTURE

- **\$44 million** to build a new road connection between Garfield Road at Denmark Road and Westminster Street, near Riverstone.
- An additional **\$14.3 million** towards Stage 1 of the Moss Vale Bypass, bringing total investment to \$20 million.
- **\$5.5 million** to the NSW Rail Museum to re-open the Picton Loop Line, a 152 year old line between Buxton and Colo Vale.

- **\$2 million** towards the final stage of the Gannons Park water quality Improvement and stormwater harvesting project.
- **\$600,000** to the Tweed Shire Council for maintenance of the Northern Rivers Rail Trail.
- **\$93,000** to Mullumbimby High School for a new Bus Shelter.

LOCAL COMMUNITIES CONT.

OTHER LOCAL PROJECTS

EARLY CHILDHOOD EDUCATION GRANTS PROGRAM

- **\$14,850** to Bundanoon District Preschool to build a new chicken pen and vegetable garden to enhance their weekly cooking program, and to build children’s understanding of where their food comes from. As well as \$60,000 to the Port Stephens Mobile Preschool Activity Van to continue its services.

FIRE STATION IN LISMORE

- Provide planning funding for a new co-located Fire and Rescue NSW and Ambulance station in Lismore.

NEW KINGSCLIFF FIRE STATION

- Provide funding to purchase land and build a new fire station in Kingscliff.

NEW RESCUE RAFT FOR SES HOLROYD

- Provide **\$10,000** to the Holroyd SES unit to purchase a new rescue raft and other equipment.

UPGRADE OLDS PARK

- Provide **\$500,000** to Georges River Council to install new irrigation and resurface the field at Olds Park Field 2.

NEW MULTI-USE COMMUNITY SPORTS PAVILION AT GRANVILLE PARK

- Provide **\$2.7 million** to Cumberland Council from within the Greater Sydney Sports Facility Fund, for a new multi-use community sports pavilion at Granville Park, Merrylands.

UPGRADE THE PENNANT HILLS DEMONS AFL CLUB

- Provide **\$965,000** to build a new club house for the Pennant Hills Demons AFL Club at Ern Holmes Oval.

MARK LEECE FIELDS UPGRADE

- Provide **\$1.3 million** to Penrith City Council to upgrade Mark Leece Fields at St Clair.

PORTLAND TOUCH FOOTBALL ASSOCIATION UPGRADES

- Provide **\$500,000** to Portland Touch Football Association towards upgrades of its facilities.

UPGRADE KNAPSACK PARK

- Provide **\$750,000** to the Blue Mountains Council to upgrade Knapsack Park in Glenbrook.

NEW MULTI-SPORT PRECINCT

- **\$2.2 million** from the Greater Sydney Sports Facility Fund to the Wollondilly Shire Council towards the Wilton Recreational Reserve multi-sports precinct.

INSTALLING SAFETY LIGHTING FOR REGIONAL TOWNS

- **\$110,000** towards installing safety lighting in Jindabyne, Bombala, Berridale and Cooma.

NEW PORTLAND CEMENT WORKS MUSEUM

- Provide **\$500,000** to 'the Foundations' to build a new Portland Cement Works Museum.

UPGRADE BANGALOW LIONS CLUB

- **\$228,000** to upgrade the Bangalow Lions Club bar and BBQ kiosk.

UPGRADE COOMA CBD

- **\$1 million** to upgrade Sharp Street in the Cooma CBD.

REVITALISE LISMORE CBD

- **\$1.5 million** to the Lismore City Council to revitalise the Lismore CBD.

SCONE MAIN STREET UPGRADES

- **\$7 million** to the Upper Hunter Shire Council for the Scone Main Street upgrades.

ESTABLISH A CITRUS CENTRE OF EXCELLENCE

- **\$300,000** to the Griffith Centre for Irrigated Agriculture (GCIA) to establish a Citrus Centre of Excellence in Griffith.

UPGRADE YASS WATER TREATMENT PLANT

- Provide **\$1.2 million** to upgrade the Yass water treatment plant from the Safe and Secure Water Program, following business case finalisation.

INVESTIGATION OF COEDUCATIONAL FACILITY AT HORNSBY

- Commence a feasibility study to build a new coeducational facility to meet growing demands of residents in Hornsby.

BANKSIA MENTAL HEALTH UNIT REDEVELOPMENT

- Planning for the redevelopment of the Banksia Mental Health Unit in Tamworth under the State-wide Mental Health Infrastructure Program.

NEW QUEANBEYAN RESPITE CARE CENTRE

- **\$750,000** to build a respite care centre in Queanbeyan to support people suffering from terminal and chronic illness.

FUNDING FOR GARRAWARRA CENTRE RESIDENTIAL AGED CARE FACILITY

- **\$177,000** for a new bus and equipment at the Garrawarra Centre residential aged care facility.

KARITANE RESIDENTIAL SERVICE UPGRADE

- **\$130,000** to Karitane Residential Service for upgrades to support their work helping new parents and babies.

ONG JETTY HEALTHCARE CENTRE UPGRADE

- **\$110,000** to upgrade air conditioning units at the Long Jetty Healthcare Centre.

NEW EQUIPMENT FOR MOUNT DRUITT HOSPITAL

- **\$17,000** for two medical grade treadmills at Mount Druitt Hospital.

This document contains announcements made by the New South Wales Government during the 2019 election campaign. It includes election commitments costed by the Parliamentary Budget Office (PBO), as well as other announcements from programs. Some announcements which are funded by existing business as usual programs may not be included in this document. Projects delivered over a longer time frame may have planning money allocated or partial funding reserved.



GETTING
it DONE