

2. NEW INFRASTRUCTURE PROGRAM TO SUPPORT ESSENTIAL SERVICES, HOUSING AND COMMUNITIES

All people in New South Wales deserve access to the essential infrastructure needed to support thriving communities, including schools, hospitals, transport and energy.

The NSW Government's Essential Infrastructure Plan supports the growing communities of New South Wales by delivering investment in new schools and hospitals as well as the public transport and roads we rely on, and the energy transition we need to secure a clean and sustainable future.

Highlights of the Government's current infrastructure pipeline include:

- \$9.8 billion for schools and skills infrastructure
- \$13.8 billion for health infrastructure
- \$72.3 billion for public transport and infrastructure
- \$3.6 billion for energy infrastructure
- \$2.7 billion to build stronger communities.

The \$116.5 billion Essential Infrastructure Plan delivers new investment in schools and hospitals, without privatising public assets.

2.1 Communities and Justice



Communities and Justice agencies deliver community services that support a safe and just New South Wales through operating an efficient and effective legal system, protecting children and families, responding to natural disasters and emergencies, promoting public safety, reducing reoffending, supporting community harmony and social cohesion.

\$2.7 billion

Capital Expenditure to 2026-27

\$849.1 million

Capital Expenditure 2023-24

This Budget includes capital investment of \$2.7 billion in Communities and Justice over the four years to 2026-27.

Box 2.1: Eurobodalla Emergency Services Precinct

This Budget commits an additional \$5.0 million in capital grant funding to develop a new Rural Fire Service (RFS) Fire Control Centre (FCC) and integrated Emergency Operations Centre (EOC) at Moruya to service the South Coast and enhance community safety. This brings the total investment in this critical facility to \$20.0 million.

The NSW RFS is working with Eurobodalla Shire Council to identify suitable locations for the development within Moruya. The new site will enhance capabilities and communications across Incident Management Teams when responding to major fires and other emergencies. The FCC will also deliver volunteer training, manage local response and coordinate various logistical functions which all aim to deliver better outcomes for the community during emergencies and natural disasters.

Hazard reduction teams working out of the EOC will also help reduce bush fire risks in this area of the Far South Coast. The same location will also accommodate the NSW State Emergency Service (SES), Fire and Rescue NSW and Marine Rescue NSW and allow for greater coordination especially during major disaster events.

This precinct will further strengthen the interoperability of Emergency Services, providing a centralised facility for the command and coordination of responses to both natural and man-made disasters in the Far South Coast region.

Table 2.1: Key new Communities and Justice projects commencing in 2023-24 included in this Budget

Project	Estimated total cost	Expenditure over four years to 2026-27
Critical Police Radio Network Infrastructure in Southern Region (NSW Police)		
To refresh end-of-life technology of the police radio network infrastructure covering the Southern, Southwest and Far West Regions of New South Wales.	\$26.6 million	\$26.6 million
Urgent repairs and refurbishments at Glebe police station, Nepean Police Area Command and Potts Hill police facility		
Urgent critical infrastructure upgrades at the Potts Hill facility and Glebe Police Station. Refurbishment works at Penrith and St Marys police stations will accommodate increased staff levels.	\$8.2 million	\$8.2 million
Replacement of Police Floating Wharf at Balmain		
A new fit-for-purpose police floating wharf at Balmain.	\$7.7 million	\$7.7 million
Fire Station Upgrades		
Refurbishment of the fire stations at Engadine, Helensburgh, Thirroul, Sutherland, and Coledale.	\$5.0 million	\$5.0 million
Helensburgh Police Facilities Upgrade		
The Regional Growth Fund will fund the election commitment to upgrade police facilities at Helensburgh.	\$3.0 million	\$3.0 million
Refurbishment of Police Class 1 Vessel		
Refurbishment of the Class 1 Offshore Patrol Vessel, the "Nemesis", to extend its operational life.	\$2.0 million	\$2.0 million
Minor upgrades at Accor Stadium		
Includes the renaming of a stand at Accor Stadium after female sports icons and provide better public recognition for other female athletes.	\$0.9 million	\$0.9 million

Table 2.2: Key Communities and Justice projects continuing in this Budget

Project	Estimated total cost	Expenditure over four years to 2026-27
Prison Bed Capacity Program		
Delivering fit-for-purpose capacity across the custodial system, through the implementation of additional immediate, short and medium term prison bed capacity.	\$2.4 billion	\$30.9 million
Sydney Football Stadium		
The redeveloped Sydney Football Stadium has reopened and is now operating as a world-class sporting and entertainment precinct capable of hosting high value sporting and entertainment events. The redevelopment project now enters its finishing stages, due to be completed in late 2023.	\$828.0 million	\$8.2 million
Penrith Stadium Redevelopment		
Redevelopment of Penrith Stadium will turn it into a world-class suburban sport, entertainment and community venue. A Penrith Stadium redevelopment is a commitment of the Government and the final project scope will be considered by the Government in 2023-24.	\$309.0 million	\$309.0 million

Project	Estimated total cost	Expenditure over four years to 2026-27
<p>Fire and Rescue NSW (FRNSW) Replacement of Fire Appliances Program</p> <p>This project replaces aged essential firefighting vehicles and supplies additional vehicles to areas of high demand, based on community needs. This ensures the community is consistently supported by operational vehicles that are safe, reliable and incorporate the latest advances in technology.</p>	\$261.3 million	\$75.4 million
<p>Sustaining Critical Infrastructure Program Phase 2</p> <p>This program will support critical infrastructure upgrades across the Department of Communities and Justice, providing investment in Audio Visual Link facilities and enhancements of courthouses, correctional facilities and youth justice facilities.</p>	\$120.0 million	\$72.5 million
<p>SES Fleet Replacement of vehicles, boats and trailers</p> <p>Investment in replacing the SES fleet to help provide a timely response to communities during floods, tsunamis and rescues.</p>	\$115.2 million	\$43.9 million
<p>RFS NSW Bushfire Inquiry Funding Package – Tranche 3</p> <p>Significant items in this package will provide safety upgrades and new vehicles for bushfire fighting response and additional trucks for crews involved with hazard reduction works across the State.</p>	\$68.9 million	\$27.1 million
<p>New Fire Stations</p> <p>New stations and fleet are being planned and built in key locations across the state including Busby, Wentworthville, Ryde, Marsden Park*, Cessnock, Dungog, Muswellbrook, Lithgow and Broken Hill.</p> <p>*Planning work to deliver a new fire station for the area is underway with capital funding to be allocated following planning approvals.</p>	\$54.8 million	\$37.9 million
<p>SES Critical Communications Enhancement Program (CCEP) - Stay Safe Keep Operational</p> <p>Stay Safe and Keep Operational program is to safely maintain existing agency front line communications while the enhanced Government Radio Network (GRN) is being delivered through the CCEP.</p>	\$53.8 million	\$31.4 million
<p>FRNSW Fit for Purpose Fire Stations</p> <p>This program will increase women's participation in the FRNSW workforce and enhance workplace safety, including upgrades and installing new female bathrooms at fire stations across the State.</p>	\$50.0 million	\$20.0 million
<p>Dubbo Regional Education and Training Centre</p> <p>An additional \$5.9 million has been provided for the new regional education and training centre at Dubbo to increase training facilities in the region. This will include Active Armed Offender training, firing range, simulation suites, digital learning platforms and lecture facilities.</p>	\$40.9 million	\$17.5 million
<p>Transform Prisoner Rehabilitation</p> <p>This project will provide access to digital rehabilitation programs and services for NSW prison inmates such as the inmate learning portal, library and mental health services.</p>	\$40.4 million	\$11.9 million

Project	Estimated total cost	Expenditure over four years to 2026-27
New Lake Macquarie Sport and Recreation Centre Project		
Construction of the new Lake Macquarie Centre at the old Morisset Hospital site, to replace the old Myuna Bay Centre and to support the needs of the local community.	\$40.0 million	\$32.3 million
Law Enforcement Monitoring Facility		
An additional \$6.0 million has been provided to enable delivery of the law enforcement monitoring facility to enhance investigative and surveillance capabilities.	\$27.0 million	\$12.5 million
Response to the independent review of 2021 Flood Events and Facilities Review		
Establish two new Zone headquarters in Northern and Western NSW to appropriately prepare for and respond to the risk of future flood events across the State and provide an uplift to eighteen critical priority unit facilities across the State.	\$23.5 million	\$18.8 million
Expansion and upgrade of Audio Visual Link facilities for court and tribunal rooms, including for Domestic Violence Complainants and Witnesses		
Audio Visual installations for court and tribunal rooms to support operations across New South Wales.	\$18.0 million	\$11.6 million
Response to the 2022 Flood Inquiry		
Significant items in this package will provide investments in state-wide flood rescue coordination, operational systems, equipment and multi-agency integration to ensure effective multi-agency flood rescue response across New South Wales.	\$14.9 million	\$10.9 million
New Moama Police Station		
An additional \$4.0 million has been provided to expand the scope of this project to build a new police station on a new site.	\$8.0 million	\$7.8 million
Removal of Cell Ligature Points		
Undertake refurbishment of cells to remove obvious hanging points.	\$6.0 million	\$6.0 million
Sydney International Regatta Centre Replacement of Electronic Timing System		
Replacement of the electronic timing system that enables the Regatta Centre to continue hosting competitive regattas including international events. Due for completion in 2024.	\$3.6 million	\$3.0 million

Pages 4-8 to 4-18 of Chapter 4 of this *Infrastructure Statement* lists the major capital projects and minor works for the Communities and Justice agencies, including the ETC, estimated expenditure to 30 June 2023, and 2023-24 allocation.

2.2 Customer Service



The Customer Service agencies are committed to providing effective and easy-to-use services that customers and communities trust, no matter who they are, where they are or what they need. This includes delivering world-class services in person, online and over the phone, as well as improving the digital availability, reliability and security of NSW Government platforms, information and services.

\$1.2 billion	Capital Expenditure to 2026-27
\$480.1 million	Capital Expenditure 2023-24

The NSW Government is focused on investing in whole-of-sector digital information and communication technology to improve services for the people of New South Wales. A key ongoing goal is to promote a progressive, whole-of-sector approach to service provision, enabling clusters to promote productivity and efficiency.

This Budget includes \$1.2 billion in capital spending for Customer Service initiatives and projects over the four years to 2026-27.

Table 2.3: Key new Customer Service projects commencing in 2023-24 included in this Budget

Project	Estimated total cost	Expenditure over four years to 2026-27
Digital Restart Fund – OneCX – Tranche 3		
The OneCX program is working with agencies to build nsw.gov.au as the single location for customers to source information about NSW Government services.	\$7.1 million	\$7.1 million

Table 2.4: Key Customer Service projects continuing in this Budget

Project	Estimated total cost	Expenditure over four years to 2026-27
Critical Communications Enhancement Program		
This program consolidates Government-owned radio networks to facilitate a co-ordinated Government response to critical incidents and emergencies.	\$1.3 billion	\$600.4 million
Modernise Licensing and Compliance Program		
This initiative works towards delivery of additional digital licence scheme products to make it easier for citizens and businesses to gain authorisation to perform an activity, and regulators to manage licences and compliance effectively.	\$104.1 million	\$23.5 million
Complaints, Compliance & Enforcement Program		
A set of reforms to complaints handling, compliance activities, and investigations and enforcement at SafeWork and Fair Trading NSW will deliver smarter and more customer-centric digital solutions that reduce red tape and enhance business productivity across New South Wales.	\$31.7 million	\$14.5 million
Live NSW (Spatial Digital Twin)		
Building a cross sector collaborative environment (shared digital platform) for visual location information (mapping) in a four-dimensional model to support decision making across utilities, land use, and planning.	\$31.3 million	\$16.3 million
New Service NSW service centres		
Expansion of the Service NSW footprint throughout local communities will improve customers' access to government services.	\$20.1 million	\$8.7 million

Pages 4-19 to 4-21 of Chapter 4 of this *Infrastructure Statement* lists the major capital projects and minor works for the Customer Service agencies, including the ETC, estimated expenditure to 30 June 2023, and 2023-24 allocation.

2.3 Education



This Budget demonstrates the NSW Government’s commitment to meet the urgent challenges facing public education in New South Wales. The NSW Government is delivering capital investments that will modernise existing school assets and provide additional teaching spaces where they are most needed.

\$9.8 billion

Capital Expenditure to 2026-27

\$2.8 billion

Capital Expenditure 2023-24

The 2023-24 Budget includes \$1.4 billion in new capital expenditure over the four years to 2026-27 that will support planning and delivery of 34 new and upgraded schools, with many targeted at replacing demountables and meeting the need for additional facilities in rapidly growing communities.

The NSW Government is committed to high quality public education that starts in the early years by fast-tracking the delivery of 100 new and upgraded preschools. This is the biggest investment in public preschools in New South Wales’s history, and the NSW Government will ensure every new primary school also includes a co-located preschool.

The Government is focussing on planning and building new primary schools and secondary schools in areas of growth to ensure every student can attend a local school. Upgrades are underway at 14 primary school and 10 high school’s to modernise assets, provide additional facilities and replace demountable classrooms.

See Box 2.3 for a list of new projects in this Budget and further information on the Government’s record education program.

Box 2.2: Regional Schools

This Budget dedicates more than \$1.4 billion over four years to deliver a pipeline of new and upgraded schools for regional NSW. The NSW Government is committed to supporting students across the State. This includes a new permanent high school for Googong and an expansion of Jerrabomberra High School in the State’s southwest, together with a new high school in Medowie in the Hunter and an upgrade to Vincentia High School have been approved in this Budget demonstrating the Government’s commitment to ensuring secondary students can attend a local high school.

Box 2.3: Demonstrating a commitment to new and upgraded schools

For more information see <https://www.schoolinfrastructure.nsw.gov.au>

New Schools and Upgrades

- 100 new preschools
- Calderwood – Planning (new primary school)
- Cambridge Gardens Public School Upgrade
- Cammeray Public School Upgrade
- Dalmeny Public School Upgrade
- Dapto High School Covered Outdoor Learning Area
- Dundas Public School Upgrade
- Eagle Vale High School (selective sports stream)
- Flinders – Planning (new high school)
- Former Shoalhaven Anglican School site (open for public education)
- Gledswood/Gregory Hills (new high school)
- Googong (new high school)
- Greenway Park Public School Upgrade
- Huntlee – Planning (new primary school and high school)
- Jerrabomberra High School Upgrade – Stage 2
- Jordan Springs (new high school)
- Katoomba High School New Multi-Purpose Hall
- Kingswood Public School Upgrade
- Kogarah Public School Upgrade
- Leppington/Denham Court (new high school)
- Medowie (new high school)
- Melrose Park (new high school)
- Minnamurra Public School (new nature playground)
- Northbridge Public School Upgrade
- Northmead Creative and Performing Arts High School Upgrade
- Northmead Public School Upgrade
- Pottsville – Planning (new high school)
- Schofields/Tallawong (new high school)
- Sutherland Public School New Multi - Purpose Hall
- Sydney Olympic Park (Carter St Precinct) (new primary school)
- The Ponds High School Upgrade
- Vincentia High School Upgrade
- West Dapto – Planning (new primary school)

Ongoing works – New and Upgraded Schools

- Albury Thurgoona (new primary school)
- Austral Public School Upgrade
- Bangalow Public School Upgrade
- Bankstown North Public School Upgrade
- Bathurst Secondary School Community Group Renewal
- Bexhill Public School Upgrade
- Birrong Boys and Girls High School Upgrade
- Bletchington Public School Upgrade
- Bomaderry High School Upgrade
- Budawang School (relocation)
- Bungendore High School
- Canterbury Boys High School Upgrade
- Canterbury South Public School Upgrade
- Carlingford West Public School Upgrade
- Castle Hill Public School Upgrade
- Cecil Hills High School Upgrade
- Centre of Excellence for Agricultural Education
- Chatswood (new primary school)
- Chatswood Public School and High School Upgrade
- Concord High School Upgrade
- Condell Park High School Upgrade
- Cronulla High School Upgrade
- Cumberland High School Upgrade
- Darcy Road Public School Upgrade
- Darlington Public School Upgrade
- Dubbo Primary School Community Group Renewal
- Eastwood Public School Upgrade
- Edmondson Park (new high school)
- Edmondson Park Public School (new school)
- Engadine High School Upgrade
- Epping West Public School Upgrade
- Fort Street Public School Upgrade
- Gables (new primary school)
- Galungara Public School Upgrade - Stage 2
- Gillieston Public School (redevelopment)
- Girraween Public School Upgrade
- Gledswood Hills Public School – Stage 2
- Glenwood High School Upgrade
- Googong Public School
- Green Square Public School
- Gregory Hills Public School (new school)
- Gulyangarri Public School (formerly new school in the Liverpool electorate)
- Hastings Secondary College Upgrade
- Hunter River High School Upgrade
- Hurlstone Agricultural High School Upgrade - Stage 2
- Irrawang High School Upgrade
- Jerrabomberra High School
- Jindabyne Education Campus
- John Palmer Public School Upgrade
- Jordan Springs Public School Upgrade – Stage 2
- Kingscliff High School Upgrade
- Kingscliff Public School Upgrade
- Leeton Primary School Community Group Renewal
- Lennox Head Public School (relocation)
- Leppington Public School Upgrade
- Liverpool Boys and Girls High School Upgrade
- Liverpool West Public School Upgrade
- Macquarie Park Education Campus
- Manly Village Public School Upgrade
- Matthew Pearce Public School Upgrade
- Melonba (new primary school)
- Melonba High School (formerly Marsden Park new high school)
- Melrose Park Public School (redevelopment)
- Middle Head Environment Education Centre
- Midtown Macquarie Park (new primary school)
- Millthorpe Public School Upgrade

<ul style="list-style-type: none"> • Milton Public School Upgrade • Moruya High School Upgrade • Mosman High School Upgrade • Muswellbrook South Public School Upgrade • Narrabeen North Public School and Narrabeen Sports High School Upgrades • Neutral Bay Public School Upgrade • New Environmental Education Centre (Penrith Lakes) • New schools for Westmead • Newcastle High School (redevelopment) • Nirimba Fields (new primary school) • North Sydney Public School Upgrade • Nowra (new primary school) • Oran Park Public School Upgrade - Stage 2 • Orange Grove Public School Upgrade • Parramatta East Public School Upgrade 	<ul style="list-style-type: none"> • Punchbowl Public School Upgrade • Randwick Boys and Girls High School Upgrade • Rhodes East (new primary school) • Riverbank Public School Upgrade • Rouse Hill High School Upgrade • Rydalmere Education Campus • Schofields Public School Upgrade • Schools at Meadowbank Education and Employment Precinct • Seven Hills High School Skills Upgrade • Sir Joseph Banks High School Upgrade • St Leonards Education Precinct • Tallawong (new primary school) • Telopea Public School Upgrade • The Forest High School (Relocation) • Tweed Heads South Public School Upgrade 	<ul style="list-style-type: none"> • Tweed River High School Skills Upgrade • Tweed River High School Upgrade • Ulladulla & Milton Primary School Community Group Renewal • Ulladulla High School Upgrade • Upgrades for high schools in Griffith • Upgrades for schools in Murwillumbah • Wee Waa High School Upgrade • Wentworth Point (new high school) - (formerly 'Sydney Olympic Park new high school') • Wentworth Point Public School Upgrade – Stage 2 • Wentworthville Public School Upgrade • Wilton Junction (new primary school) • Wilton Public School Upgrade • Yanco Agricultural High School Upgrade
<p>Programs</p>		
<ul style="list-style-type: none"> • Co Funded Metropolitan and Regional School Renewal Program 	<ul style="list-style-type: none"> • Maintenance Program • Minor Works Program 	<ul style="list-style-type: none"> • Rural Access Gap Direct Intervention Package

Table 2.5: Key new Education projects commencing in 2023-24 included in this Budget

Project	Estimated total cost	Expenditure over four years to 2026-27
Four new primary schools and 10 new high schools		
In areas of growth to help ensure every student can attend a local school.		
A new primary school will be built near Sydney Olympic Park and planning will commence for three new primary schools at Huntlee, West Dapto and Calderwood. New High schools will be built at Medowie, Googong, Jordan Springs, Gledswood Hills/Gregory Hills, Melrose Park, Leppington/Denham Court and Schofields/Tallawong, and planning will commence for three high schools at Huntlee, Pottsville, and Flinders.	\$767.1 million	\$682.7 million
100 new government preschools		
Co-located with NSW public schools, including delivering a preschool with every new primary school project.	n.a.	n.a.
NSW Education Standards Authority's (NESA) cyber and technology program		
Will strengthen NESA's defensive and preventative capabilities, substantially reduce NESA's overall technology and cyber security risk profile and build better resilience, speed and responsiveness while improving recovery time in case of a cyber incident.	\$59.1 million	\$45.0 million
TAFE NSW Digital Project		
The Digital Project will provide reliable internet and Wi-Fi connectivity, provide access to a fleet of digital devices and upgrade end-user and collaborative devices across various campus locations.	\$18.5 million	\$18.5 million

Table 2.6: Key Education projects continuing in this Budget

Project	Estimated total cost	Expenditure over four years to 2026-27
TAFE Asset Renewal Program (ARP)		
The ARP will ensure the timely replacement of assets across TAFE NSW campuses. The program will improve facilities, upgrade teaching equipment, and support overall sustainability of TAFE NSW's asset portfolio.	\$184.0 million	\$59.5 million
Wentworth Point (new high school)		
The new high School at Wentworth Point will provide new learning spaces including food technology and wood and metal working, a new library, new performance and fitness facilities and administration and staff facilities.	\$160.0 million	\$119.9 million
The Forest High School (Relocation)		
Relocation of The Forest High School involves the construction of a new high school for up to 1,500 students. The new school includes administration, a support learning unit, science facilities, wood and metal work facilities, library, staff facilities, visual art facilities, outdoor sporting facilities including a sporting field and six games courts.	n.a.	n.a.

Project	Estimated total cost	Expenditure over four years to 2026-27
Cecil Hills High School Upgrade		
The project upgrades facilities and provides capacity for 2,040 students. The upgrade supports the expansion of STEM offerings, provision of 50 new permanent teaching space including 46 general learning spaces and 4 dedicated STEM learning spaces, a new hall, refurbishment of the canteen and the existing hall for a fitness unit and new outdoor covered workshop.	n.a.	n.a.
Institute of Applied Technology (IAT) for Construction (TAFE)		
TAFE NSW is delivering the IAT for Construction at the TAFE NSW Nepean-Kingswood campus in Western Sydney to provide specialised training in fields like construction, carpentry, electrical and plumbing.	\$80.4 million	\$11.9 million
Gregory Hills Public School		
Gregory Hills Public School is a new primary school for over 1,000 students with 44 permanent teaching spaces and 4 support classes.	n.a.	n.a.
Green Square Public School		
The new public school in Green Square will provide spaces for up to 600 students. The school and community spaces will be delivered by the Department of Education in collaboration with the City of Sydney, incorporating joint and community facilities. The ground floor will be used by the school during school hours and open to the public after hours and during weekends.	\$76.0 million	\$60.9 million

Pages 4-22 to 4-30 of Chapter 4 of this *Infrastructure Statement* lists the major capital projects and minor works for the Education agencies, including the ETC, estimated expenditure to 30 June 2023, and 2023-24 allocation.

2.4 Environment and Planning



The Environment and Planning agencies are responsible for the stewardship of the built and natural environment in New South Wales. The key areas of focus include initiatives to unlock housing supply in New South Wales, protect our native flora and fauna, conserve heritage for the benefit of the community, set future directions for waste and sustainable materials, create better public and open spaces, manage government-owned land and property and secure and improve the State's water supply.

\$4.7
billion

Capital
Expenditure
to 2026-27

\$1.8
billion

Capital
Expenditure
2023-24

This Budget includes \$4.7 billion in capital spending for Environment and Planning initiatives and projects over the four years to 2026-27.

Box 2.4: Protecting Koalas in NSW

The 2023-24 Budget provides \$79.3 million total capital expenditure over four years to preserve koalas in the wild and protect their natural habitat. Koalas are a threatened species requiring measures to protect and restore remaining koala populations. This additional outlay will expand existing nature reserves, protect critical koala habitat and preserve koala populations in the wild.

Key capital investments include:

- \$28.5 million to support the establishment of the Great Koala National Park on the Mid-North Coast to preserve large tracts of koala habitat
- \$22.5 million to construct and complete koala-friendly crossings across Appin Road supporting the sustainability of koalas in South-Western Sydney
- \$22.1 million to establish the new Georges River Koala National Park to protect one of the largest koala populations in metropolitan Sydney
- \$6.2 million to preserve wildlife corridors and establish a reserve for the koala population in Woronora Heights.

Ecological advantages of this capital expenditure will extend to a range of other threatened species of flora and fauna within these areas. Local and Aboriginal communities will benefit from increased tourism and employment, and conservation of traditional cultural heritage.

Box 2.5: Critical investment in nature-based tourism

The NSW Government is investing to protect key natural heritage assets and ensure biosecurity and visitor safety while sustaining the tourism economy across the State.

In the 2023-24 Budget, the NSW Government provides:

- \$36.4 million capital expenditure for the replacement and renewal of visitor infrastructure to ensure ongoing access and enjoyment of New South Wales's unique National Parks
- funding for the continuation of a marine freight service to Lord Howe Island and upgrade of its waste management facility to meet essential community needs and biosecurity and regulatory standards for the World Heritage listed site.

The Government's continued funding will ensure key nature-based sites remain open and safe to support increasing tourism demand, protect the environment and deliver economic, social and environmental benefits to the NSW people and economy.

Table 2.7: Key new Environment and Planning projects commencing in 2023-24 included in this Budget

Project	Estimated total cost	Expenditure over four years to 2026-27
Cumberland Plain Conservation Plan		
The capital component of a \$103.6 million investment to deliver biodiversity offsets conserving biodiversity in Western Sydney under the Cumberland Plain Conservation Plan.	\$68.2 million	\$68.2 million
Georges River Koala National Park		
The establishment of a new Georges River Koala National Park to protect one of the largest koala populations in metropolitan Sydney. The project includes construction of visitor infrastructure such as walking and cycling paths, amenity blocks and carparks to support recreational activities.	\$47.9 million	\$22.1 million
National Parks Visitor Infrastructure Replacement and Upgrade		
Critical replacement and renewal of existing visitor infrastructure across national parks in New South Wales.	\$36.4 million	\$36.4 million
Great Koala National Park		
The capital component of an \$80.0 million investment to create the Great Koala National Park to preserve large tracts of koala habitat on the Mid-North Coast of New South Wales.	\$28.5 million	\$28.5 million
Property NSW Asset Maintenance		
Critical maintenance across the State's property portfolio.	\$22.8 million	\$22.8 million
Koala Friendly Crossings		
The completion of three koala-friendly crossings to improve the connectivity of koala habitat along Appin Road which would ensure the sustainability of koalas in South-Western Sydney.	\$22.5 million	\$22.5 million
Digital Upgrade to the Biodiversity Offset Scheme		
A digital architecture upgrade and re-design to enable digital infrastructure to meet the demand of the Biodiversity Offset Scheme.	\$17.2 million	\$17.2 million

Project	Estimated total cost	Expenditure over four years to 2026-27
Wolli Creek Regional Park		
Incorporation of additional land within Wolli Creek Regional Park to protect the diverse ecosystem and threatened species within the park. The park provides valuable open space in the urban environment of inner South-West Sydney.	\$8.8 million	\$8.8 million
Protect Koalas of Southern Sydney		
The transfer of wildlife corridors in Woronora Heights to support critical koala habitat and the movement of wildlife.	\$6.2 million	\$6.2 million
Lord Howe Island – Marine Infrastructure		
Providing for the continuation of a marine freight service that meets biosecurity standards for a World Heritage listed site and meets essential community needs.	n.a.	n.a.
Lord Howe Island – Waste Management Facility Upgrade		
Upgrade to the existing Waste Management Facility on Lord Howe Island to ensure enduring compliance with legislative and regulatory requirements.	n.a.	n.a.

Table 2.8: Key Environment and Planning projects continuing in this Budget

Project	Estimated total cost	Expenditure over four years to 2026-27
Bradfield City Centre Stage 1 Enabling Works		
Early works and site preparation for the Bradfield City Centre, which will be situated on the doorstep of the new Western Sydney International (Nancy-Bird Walton) Airport.	\$870.6 million	\$681.8 million
Advanced Manufacturing Research Facility (AMRF)		
A new state-of-the-art facility within Bradfield City Centre. The AMRF will support industry, government and research institutions to collaborate, develop, scale up and commercialise advanced manufacturing technologies by providing specialist equipment and workspaces, and other services.	\$261.9 million	\$213.8 million
Social and Community Housing		
Continuing construction, upgrades and maintenance of social and community housing for First Nations communities through the Aboriginal Housing Office.	\$260.2 million	\$156.0 million
Sustainable Diversion Limit Adjustment Mechanism (SDLAM) Water Infrastructure		
An Australian Government funded program delivering five measures under the Murray-Darling Basin Plan, to achieve similar or better environmental outcomes for rivers, wetlands and wildlife using less water.	\$224.4 million	\$189.7 million
National Parks Strategic Fire Trail Network Upgrades		
Upgrade of strategic fire trails in national parks, to support the effective management of wildfires to prevent loss of life, property and biodiversity.	\$172.2 million	\$79.2 million
Improving Access to National Parks		
Improving access to the natural beauty of NSW national parks and supporting local tourism by upgrading and extending walking trails and improving visitor infrastructure and facilities.	\$149.6 million	\$23.4 million

Project	Estimated total cost	Expenditure over four years to 2026-27
Strategic Open Spaces Program across Greater Sydney		
Upgraded public parklands at Penrith, Ermington, Appin, Leppington, Frenchs Forest, Belrose, Carramar, Beaumont Hills, Hurstville to support healthy and active communities.	\$140.0 million	\$77.1 million
Reserve Establishment and Activation		
Continuing investment of a fund to support the establishment and activation of reserves, fill critical gaps in the national parks estate and enhance regional tourism and economic benefits.	\$120.0 million	\$7.1 million
Office Hubs in Dubbo and Coffs Harbour		
New office hubs in Dubbo and Coffs Harbour to consolidate existing tenancies and provide modern, efficient office spaces to help attract and retain regional government workers.	\$119.9 million	\$111.5 million
Registrar General's Building Project		
Supporting the adaptive re-use of the Registrar General's Building as a cultural venue and public open space consistent with the Macquarie Street East Precinct Review.	\$87.2 million	\$70.6 million
Great Walks: Multi-day Walking Experiences		
Creating multi-day walking trails: the Gardens of Stone Walk and the Great Southern Walk and Illawarra Mountain Biking Network.	\$80.4 million	\$73.9 million
Upgrades to National Parks Firefighting Capacity		
Upgrading the National Parks and Wildlife Service firefighting capacity to support hazard reduction activities across the State's national parks and minimise bushfire risk to life, property and the environment.	\$76.8 million	\$35.2 million
Dorrigo Escarpment Walk and the Arc Rainforest		
Creating a four-day, three-night walk through World Heritage rainforest and towering eucalypts that will feature dramatic escarpments and scenic waterfalls. Working in partnership with local First Nations groups, capital works include a new visitor centre, elevated treetop walkway and visitor accommodation.	\$56.4 million	\$55.3 million
Koala Strategy		
The NSW Koala Strategy will help secure koalas in the wild by protecting, restoring and improving the condition of koala habitat, supporting local communities to conserve koalas, improving koala safety and health, and building knowledge to improve koala conservation.	\$52.4 million	\$31.1 million
Me-Mel (Goat Island) Remediation		
Remedial works to clean up and repair the Me-Mel island in Sydney Harbour ahead of transferring ownership back to traditional owners. Works will include the repair of seawalls and buildings, improved wharf access, upgraded services and the removal of contaminants such as asbestos and lead.	\$36.7 million	\$36.2 million
Air Quality and Environmental Monitoring Program		
Critical works to expand and maintain the NSW air quality monitoring network, and to support essential computing infrastructure enabling real time air quality alerts and forecasting for government, communities and individuals.	\$23.2 million	\$9.4 million

Project	Estimated total cost	Expenditure over four years to 2026-27
<p>National Parks Radio Network – Migration to the Public Safety Network</p> <p>Enabling the successful migration of the National Parks and Wildlife Service’s radio network onto the NSW Public Safety Network. The Public Safety Network consolidates standalone radio networks of over 70 NSW Government agencies onto one network, as part of the NSW Government’s response to the NSW Bushfire Inquiry.</p>	\$22.2 million	\$20.1 million
<p>Valnet Framework Program</p> <p>A new interactive customer centric platform for land valuation and data management, replacing legacy systems and manual processing in the Office of the Valuer-General.</p>	\$19.8 million	\$16.7 million

Pages 4-31 to 4-41 of Chapter 4 of this *Infrastructure Statement* lists the major capital projects and minor works for the Environment and Planning agencies, including the ETC, estimated expenditure to 30 June 2023, and 2023-24 allocation.

2.5 Health



Health infrastructure is a key enabler for a high performing health service which provides accessible, safe, quality care to the people of New South Wales. The NSW Government is rebuilding our essential health services to ensure all communities have access to world-class care with a 15.6 percent increase in health capital expenditure compared to last year’s budget¹.

\$13.8 billion

Capital Expenditure to 2026-27

\$3.4 billion

Capital Expenditure 2023-24

This includes investments in new infrastructure and upgrades for a number of existing health facilities across New South Wales. In addition to delivering safe, high quality and reliable health care across all settings, these investments support the attraction and retention of an appropriately skilled health workforce.

The NSW Government is committed to delivering world-class health facilities that improve access to healthcare across the state. Investments made today, ensure New South Wales is appropriately prepared to meet the growing demand for public hospital and health services in the future.

This Budget includes \$13.8 billion² of capital investment over the four years to 2026-27 in health infrastructure, which includes both hospitals and health facilities.

Box 2.6: Investing in Western Sydney’s Hospitals – additional funding for Rouse Hill Hospital

The Rouse Hill Hospital will be the first major new adult hospital build in Western Sydney in over 40 years.

Aligning with NSW Government’s priorities in investing across Western Sydney, the scope of the new Rouse Hill Hospital has been expanded with funding increasing from \$300.0 million to \$700.0 million.

The expansion of Rouse Hill Hospital will include:

- an Emergency Department including urgent care centre and emergency medicine
- maternity services and women’s health services
- day surgery unit
- adult and paediatric short stay unit
- ambulatory and outpatients care including day chemotherapy and infusion, renal dialysis mental health, and ante/post-natal care
- comprehensive medical imaging services
- prehabilitation and rehabilitation services.

¹ The four year Health capital expenditure was forecast to be \$11.9 billion in the 2022-23 Budget.

² This includes \$968.3 million for lease acquisitions and \$561.1 million of capital expensing from the Ministry of Health’s expense budget over the next four years. In 2023-24, health infrastructure spending includes \$137 million of capital expensing and \$142.1 million for lease acquisitions. This does not include \$61.9 million reserved in Restart NSW for Wollongong Hospital Upgrades, planning for the Blue Mountains Hospital Redevelopment, and planning and site selection for a new public hospital in the Western Parkland City.

Table 2.9: Key new Health projects commencing in 2023-24 included in this Budget

Project	Estimated total cost	Expenditure over four years to 2026-27
Fairfield Hospital Redevelopment		
Expansion to Fairfield Hospital to deliver more medical and rehabilitation beds, increase capacity of the emergency and critical care services, and expand other hospital and community health services.	\$550.0 million	\$350.0 million
Albury Wodonga Regional Hospital		
A major redevelopment of Albury Hospital to improve patient safety, reduce duplication of services and travel between sites, and increase the capability and responsiveness of the health service to meet future health needs.	\$538.0 million ³	\$352.6million
Canterbury Hospital Redevelopment		
An expansion of Canterbury Hospital and upgrades to existing infrastructure. The expansion of services will ensure that the facility is able to respond to the health needs of the growing, multicultural local community.	\$350.0 million	\$328.0 million
Royal Prince Alfred Hospital – Additional Funding		
Additional funding to meet the design competition requirements as a component of the planning approval and the associated cost escalation for the current \$750 million Royal Prince Alfred Hospital redevelopment. As a complex brownfield campus, the redevelopment will deliver a comprehensive solution that maximises the capability and capacity of one of Australia's leading quaternary hospitals.	\$190.0 million	\$60.1 million
Blacktown and Mount Druitt Hospitals-Additional Beds		
Expansion of Blacktown and Mount Druitt Hospitals to increase bed capacity.	\$120.0 million	\$120.0 million

³ This excludes an additional \$20 million from the Australian Government which is pending

Table 2.10: Key Health projects continuing in this Budget

Project	Estimated total cost	Expenditure over four years to 2026-27
Bankstown Hospital (New)		
Rebuilding of the hospital on a new site to transform the delivery of healthcare in the area to meet the growing health needs of south western Sydney communities. The project will include expanded and enhanced emergency, intensive care, surgical, women and children's health, rehabilitation, mental health, cancer, ambulatory and community health services.	\$1.3 billion	\$568.3 million
Nepean Hospital and Integrated Ambulatory Services Stage 1 and 2		
This ongoing redevelopment at the Nepean Hospital will improve access to innovative, effective and welcoming health services for people in Western Sydney and the Blue Mountains. Stage 1 of the project is complete following the formal opening of Nepean Hospital's new 14-storey tower in 2022. It included a new neonatal intensive care unit, renal services, medical imaging, more inpatient unit, and an accessible and welcoming front-of-house for the hospital. Construction of the second clinical services building as part of the Stage 2 Nepean Hospital redevelopment has commenced. This will include an adult Intensive Care Unit, medical imaging services and nuclear medicine, an in-centre renal dialysis unit, more in-patient beds including paediatrics, clinical support services including pharmacy, staff education and training facilities, community health services, and a new front of house and reception area.	\$1.0 billion	\$339.4 million
Randwick Campus Reconfiguration and Expansion Stage 1		
This ongoing project will reconfigure and expand the Randwick Hospitals Campus to enable delivery of contemporary models of care. There will also be better integration of clinical services, research, and support services delivery arrangements on the campus. This project will respond to a growing population, increased demand for integrated health services and patient-focused models of care for the increasing complex needs of the community.	\$869.8 million	\$109.9 million
John Hunter Health and Innovation Precinct		
The redevelopment of the John Hunter and John Hunter Children's Hospitals will deliver a significant expansion providing additional capacity and purpose-built infrastructure, to enable implementation of contemporary models of care.	\$835.0 million	\$646.2 million
Royal Prince Alfred Hospital Redevelopment		
This significant redevelopment is an innovative approach to contemporary healthcare, featuring an expansion of virtual facilities, new hospital buildings and refurbishment of existing spaces. These investments will allow for more adult inpatient beds, an expanded emergency department, intensive care unit, medical imaging services, operating theatres and maternity, birthing and neonatal services. The project will develop a whole of campus solution, which brings together new models of care, enabling technology and physical infrastructure to support service expansion and changes in service delivery.	\$750.0 million	\$549.0 million
Liverpool Health and Academic Precinct		
The Liverpool Health and Academic Precinct will provide a significant boost in health services to south western Sydney's growing population through an integrated cancer centre, expansion of the hospital's Emergency Department, neonatal intensive care, maternity and children's services, and ambulatory and outpatient care.	\$740.0 million	\$343.0 million

Project	Estimated total cost	Expenditure over four years to 2026-27
<p>New Shellharbour Hospital (including Car Park) and Integrated Services</p> <p>The New Shellharbour Hospital and Integrated Services project will enhance the current and future health services available for the Illawarra community by focusing on modern healthcare delivery, service sustainability, networking and consolidation to improve health outcomes for the region. These include enhanced services in rehabilitation and aged care, mental health, outpatients, and palliative care.</p>	\$721.9 million	\$477.9 million
<p>State-wide Mental Health Infrastructure Program</p> <p>This program enables the delivery of infrastructure needed to support and achieve key state-wide mental health reforms and priorities, including Living Well: A Strategic Plan for Mental Health in NSW 2014-2024. The program includes addressing service requirement in state-wide services such as child and adolescent and older persons services, forensic services and facilities to support recovery and greater opportunity for people to transition or receive care in the community. The program will also improve the therapeutic environment of identified NSW Health facilities providing acute mental health care.</p>	\$669.8 million	\$355.2 million
<p>Sydney Children's Hospital, Randwick – Stage 1 Children's Comprehensive Cancer Centre</p> <p>This investment delivers Stage 1 of the redevelopment and establishes Australia's first Children's Comprehensive Cancer Centre. It brings together world leading clinical care, research and teaching together to deliver improved models of care for sick and injured children across New South Wales.</p>	\$658.0 million	\$424.9 million
<p>The Children's Hospital at Westmead Stage 2 Redevelopment (including car park)</p> <p>This investment ensures that the Children's Hospital at Westmead continues to be a world leader in providing paediatric services for children locally and across the State. It will see the construction of a new paediatric services building and multi-storey car park to serve the existing and expanded Children's Hospital.</p>	\$619.0 million	\$454.4 million
<p>Ryde Hospital Redevelopment</p> <p>Redevelopment of the hospital will provide contemporary health services and facilities with an increased capacity, improve the patient experience and provide new models of care. It will also make best use of the current services available at Ryde, including the Graythwaite Rehabilitation Centre and historic Denistone House.</p>	\$479.0 million	\$402.9 million
<p>Integrated Mental Health Complex at Westmead</p> <p>The new Integrated Mental Health Complex will enable mental health services located at Cumberland Hospital West Campus to relocate to a new, purpose-built facility in the Westmead Health Precinct, connected to Westmead Hospital.</p>	\$460.0 million	\$409.0 million
<p>Shoalhaven Hospital Redevelopment</p> <p>The redevelopment will provide upgraded and contemporary health facilities. This includes significant expansion of the ambulatory care precinct, surgical beds and operating suites, medical wards including aged care, increased emergency capacity, enhanced medical imaging, pathology and support facilities.</p>	\$438.0 million	\$367.2 million

Project	Estimated total cost	Expenditure over four years to 2026-27
<p>St George Hospital – Ambulatory Care, Day Surgery, Sub-Acute Inpatient Building (including car park)</p> <p>Bringing together a range of ambulatory, outpatient and community health services will deliver better health outcomes, greater clinical integration and care coordination as well as additional car parking.</p>	\$411.0 million	\$294.3 million
<p>Grafton Base Hospital Redevelopment</p> <p>Redevelopment of the Grafton Base Hospital will support timely access to healthcare and improve patient outcomes and experience. The project includes expansion of the Emergency Department, additional critical care, medical and surgical beds and clinical support services.</p>	\$263.8 million	\$243.5 million
<p>Eurobodalla Regional Hospital Redevelopment</p> <p>The new Eurobodalla Regional Hospital will deliver a sustainable, modern and purpose-built facility to support the needs of the Eurobodalla Shire. The new hospital will deliver patient-centred health services closer to home by using the latest healthcare solutions and models of care.</p>	\$260.0 million	\$226.2 million
<p>Griffith Hospital Redevelopment</p> <p>This redevelopment will allow delivery of all key clinical services at a single location in a new, purpose-designed health facility that also supports contemporary models of care. It will include construction of a new clinical services building featuring an Emergency Department, operating theatres, and medical imaging and new services including aged care and rehabilitation inpatient beds.</p>	\$250.0 million	\$119.4 million
<p>Bathurst Hospital Redevelopment</p> <p>Redevelopment of the Bathurst Hospital will ensure the local community and wider Central West region have access to high quality care now and well into the future. The redevelopment addresses constraints of the current infrastructure and support the implementation of contemporary models of care.</p>	\$200.0 million	\$168.8 million
<p>Sydney Biomedical Accelerator (SBA) as part of Tech Precinct</p> <p>This is a co-funded partnership project between the Sydney Local Health District and the University of Sydney, comprising a state-of-the-art biomedical research complex spanning the Royal Prince Alfred Hospital and the University campuses. The SBA presents a landmark vision and delivery plan to transform the state’s biomedical research capabilities and accelerate innovation to tackle some of the most difficult and complex health challenges.</p>	\$150.0 million	\$149.3 million
<p>Moree Hospital Redevelopment</p> <p>Redevelopment of Moree Hospital will support best-practice models of care and provide patients, families, and carers modern facilities. It will deliver a new acute services building that will house a new emergency department and operating theatre, medical imaging department, maternity and birthing suite, inpatient unit, and pathology department. The redevelopment also includes a light refurbishment of existing infrastructure for community health and outpatient services. All other existing health services will continue to operate onsite.</p>	\$80.0 million	\$74.9 million

Project	Estimated total cost	Expenditure over four years to 2026-27
Gunnedah Hospital Redevelopment		
Redevelop the Gunnedah Hospital to provide patient, families and carers a modern healthcare facility. It will deliver a new acute services building that includes a new emergency department, maternity, birthing and inpatient unit.	\$53.0 million	\$49.6 million
Glen Innes Hospital Upgrade		
Redevelopment will upgrade the Glenn Innes Hospital for new contemporary facilities to meet the needs of the community into the future. It will deliver a new acute services building that will house a new emergency department, medical imaging department, maternity and birthing suite and inpatient unit. All other existing health services will continue to operate onsite in existing infrastructure.	\$50.0 million	\$46.7 million

Pages 4-42 to 4-49 of Chapter 4 of this *Infrastructure Statement* lists the major capital projects and minor works for the Health agencies, including the ETC, estimated expenditure to 30 June 2023, and 2023-24 allocation.

2.6 Jobs and Tourism



This group of agencies brings together the State's key cultural, hospitality, entertainment and tourism agencies, alongside leading economic development and investment attraction organisations, to drive investment and new jobs in New South Wales by attracting and supporting innovative and prosperous industries.

\$944.3
million

Capital
Expenditure
to 2026-27

\$512.8
million

Capital
Expenditure
2023-24

This Budget includes capital investment of \$944.3 million in Jobs and Tourism over the four years to 2026-27. This will help create prosperity and keep New South Wales competitive in a rapidly evolving global economy.

Box 2.7: Powerhouse Parramatta and Australian Museum Pacific Gallery

Considered one of the most architecturally significant projects underway in Australia, Powerhouse Parramatta will be the first major cultural institution established in Western Sydney. Once complete, Powerhouse Parramatta will be the largest museum in New South Wales and the leading science and technology museum in the Southern Hemisphere. Attracting two million visitors annually, construction is expected to be complete in 2025.

In late 2023, the Australian Museum will open a new Pacific Gallery, providing a long-awaited opportunity in one of Sydney's leading cultural facilities for Pasifika diaspora in New South Wales and across the Pacific region to share their stories.

Table 2.11: Key Jobs and Tourism projects continuing in this Budget

Project	Estimated total cost	Expenditure over four years to 2026-27
<p>New Powerhouse Museum in Parramatta and expansion of the Museum of Discovery Centre in Castle Hill</p> <p>Modern exhibition spaces will be delivered to enable the Powerhouse to hold exhibitions and showcase their collections. Works are due for completion in 2025.</p>	\$840.0 million (NSW Government contribution)	\$464.5 million
<p>Walsh Bay Arts Precinct</p> <p>The revitalised Walsh Bay Arts Precinct delivers a new home for some of Australia's most celebrated arts organisations. With contemporary facilities that complement the unique heritage value of the site, the project is supporting a sustainable and activated arts and cultural precinct to showcase NSW creativity and culture.</p>	\$379.3 million	\$14.5 million
<p>Ultimo Powerhouse Museum</p> <p>The NSW Government is supporting the heritage revitalisation of the Powerhouse Ultimo. This investment will ensure fit for purpose spaces that will deliver a dynamic applied arts and applied sciences program, presenting exhibitions that showcase the Powerhouse Collection and attract international exhibitions and programs that support the visitor and creative industries.</p>	\$250.1 million	\$119.0 million
<p>Arts Maintenance and Upgrades Program</p> <p>The fund delivers improvements to accessibility, sustainability and functionality of arts and cultural infrastructure across New South Wales. The final project, the refurbishment of The Gunnery, is due for completion in 2023-24.</p>	\$103.8 million	\$6.1 million

Project	Estimated total cost	Expenditure over four years to 2026-27
RNA Pilot Manufacturing Facility		
New South Wales is set to lead Australia with a first-of-its-kind pilot facility to develop mRNA and RNA treatments for human and animal diseases. The \$95.8 million facility (including \$72.2 million in capital expenditure) will be established in partnership with all universities in New South Wales and the Australian Capital Territory and include laboratories and pre-clinical trial spaces that facilitate early-stage RNA-based drug development.	\$72.2 million	\$70.2 million
National Art School Precinct Renewal		
The NSW Government is supporting the revitalisation of the Old Darlinghurst Goal. Home to the National Art School, this support will reinvigorate the heritage site and enhance its reputation as a leading arts and education precinct.	\$21.7 million	\$19.2 million
Global NSW Strategy		
The Global NSW Strategy seeks to ensure the presence of New South Wales on the global stage to strengthen international trade and attract world-class industry capability to the State. Funding will go towards supporting critical offshore network and international offices.	\$7.2 million	\$2.2 million
Australian Museum Pacific Gallery		
In late 2023, the Australian Museum will open a new Pacific Gallery, providing a long-awaited opportunity in one of Sydney's leading cultural facilities for Pasifika diaspora in New South Wales and across the Pacific region to share their stories. This will be a permanent gallery.	\$3.1 million	\$2.1 million

Pages 4-50 to 4-53 of Chapter 4 of this *Infrastructure Statement* lists the major capital projects and minor works for the Jobs and Tourism agencies, including the ETC, estimated expenditure to 30 June 2023, and 2023-24 allocation.

2.7 Regional NSW



Regional NSW agencies help build strong, cohesive regional communities and economies. Projects delivered will help to grow primary industries and ensure sustainable land use practices, create regional employment opportunities and steward the use of natural endowments including advancing sustainable mining and resource development.

\$651.6 million

Capital Expenditure to 2026-27

\$334.4 million

Capital Expenditure 2023-24

In addition, Regional NSW administers the delivery of major projects funded from the Snowy Hydro Legacy Fund, which is investing in transformative infrastructure across regional New South Wales.

This Budget includes \$651.6 million of capital expenditure for projects across Regional NSW over the four years to 2026-27.

Box 2.8: Supporting the regions through the Snowy Hydro Legacy Fund

The Snowy Hydro Legacy Fund was established under the *Snowy Hydro Legacy Fund Act 2018* following the sale of the State's share in Snowy Hydro Scheme to the Australian Government.

The Snowy Hydro Legacy Fund is supporting the delivery of \$572.4 million of new roads, schools, ambulance stations and community infrastructure in our regions, including:

- \$242.0 million as part of the \$334.0 million Regional Roads Fund to build new roads in regional areas, including \$46.6 million capital expenditure to upgrade timber bridges, duplicate roadways, improve flood resilience and upgrade key routes to improve driver safety
- \$222.0 million for new high schools in Medowie and Googong and upgrades for Jerrabomberra High School and Vincentia High School
- \$64.0 million for new regional helicopter ambulance bases to help improve emergency health response times in rural areas
- \$28.4 million in capital works to establish a Great Koala National Park, as part of the Government's \$80.0 million commitment
- \$16.0 million to expand the residential aged care facility at the Bombala Multipurpose Service and reopen the Currawarna Assisted Living Group facility.

The NSW Government is committed to investing in regional NSW to rebuild essential services and support job creation and economic development. The 2023-24 Budget includes funding to support \$688.7 million of capital expenditure, including:

- \$269.0 million to transform Parkes into a national freight and logistics hub (\$201.9 million from the Snowy Hydro Legacy Fund)
- \$198.5 million to support Moree becoming a northern gateway and thriving business hub in the middle of Australia's most productive grain region
- \$169.6 million for Wagga Wagga to be a hub of high value agricultural and food production supporting industries and businesses to connect to the world
- \$45.6 million in the Snowy Mountains region to support housing supply and economic activation.

Box 2.9: Protecting New South Wales from the risk of Foot and Mouth Disease

Australia is currently free from Foot and Mouth Disease, though there is an increasing risk of an outbreak into New South Wales. This would have significant impacts on state and national economies and regional communities. The Government is acting to enhance New South Wales' capacity to respond to the escalated risk of an outbreak of the disease.

The NSW Government has committed \$65.0 million to enhance the State's response capability to prepare for and manage any future outbreaks of Foot and Mouth Disease. This investment includes \$14.3 million of capital expenditure to:

- expand effluent decontamination and sterilisation system capacity at the Elizabeth Macarthur Agricultural Institute to treat animal waste
- use portable sensor activated automatic wheel and truck wash facilities to prevent the transmission of disease, pests and weeds in the event of a biosecurity outbreak.

Table 2.12: Key Regional NSW projects continuing in this Budget

Project	Estimated total cost	Expenditure over four years to 2026-27
Parkes Investments		
Building on the region's connectivity to create Australia's largest inland port, Parkes sits at the only junction of Australia's two rail spines – the Inland Rail and Trans-Australian Railway. Products can reach 80 per cent of Australia's population overnight. The NSW Government is investing in vital infrastructure including roads, sewer and water connections to support local and business needs.	\$269.0 million	\$128.9 million
Moree Investments		
A thriving business hub will be created in the middle of Australia's most productive grain region. As the State's northern gateway, the Moree's Investments will support the diversification of its vibrant agricultural economy by building on its strong connection to country and sustainable water endowments and new technologies such as protected cropping and innovative energy solutions.	\$198.5 million	\$186.5 million
Wagga Wagga Investments		
As New South Wales's southern gateway supporting Australia's richest food and agricultural region, the Wagga Wagga Investments will be a sustainable hub of high value production and manufacturing supporting industries and businesses to connect to the world. The Regional Growth NSW Development Corporation will lead development of core infrastructure including roads, digital connectivity, utilities and electricity services.	\$169.6 million	\$118.7 million
World-Class Food and Fibre		
Enhancements to research stations (including glasshouses, exotic disease diagnostic instruments and on-farm sensors and data technology) will work towards boosting agricultural productivity and support world class food and fibre production.	\$104.0 million	\$32.5 million

Project	Estimated total cost	Expenditure over four years to 2026-27
Snowy Mountains Investments		
<p>The precinct has been refocused to accelerate housing supply and rezoning of land to address the housing shortages in the region, while preserving and maintaining the important environmental and heritage values of the Snowy Mountains. Infrastructure will be delivered to support housing supply and economic activation including utilities, which will also support private investment opportunities.</p>	\$45.6 million	\$38.5 million
R&D partnership with the Grain Research and Development Corporation		
<p>The 2017 Research and Development Partnership with the Grains Research Development Corporation is a 10 year contracted partnership that will enhance productivity of plant and livestock systems.</p>	\$20.0 million	\$10.8 million
Foot and Mouth Disease – Risk and Response		
<p>The capital component of the Foot and Mouth Disease program supports the urgent operations and response capacity and enable broader surge response capability for Foot and Mouth Disease preparedness and management. This capital investment includes facilities and equipment including effluent decontamination and sterilisation system, main water reservoirs back-up system, data transmission improvements, and sensor activated automatic wheel and truck wash facilities at key handling sites.</p>	\$14.3 million	\$2.8 million

Pages 4-55 to 4-57 of Chapter 4 of this *Infrastructure Statement* lists the major capital projects and minor works for the Regional NSW agencies, including the ETC, estimated expenditure to 30 June 2023, and 2023-24 allocation.

2.8 Transport



Transport plays a key role in making New South Wales a better place to live, work and visit by connecting people and communities. Integrated transport networks including road, train, metro, bus, ferry, light rail, cycling and walking is critical for driving economic growth, wellbeing, and creating vibrant precincts and cities.

\$72.3
billion

Capital
Expenditure
to 2026-27

\$19.3
billion

Capital
Expenditure
2023-24

Rapid technological change, along with patronage increase post pandemic, means transport planning and delivery needs to be more agile and sustainable to respond to changes in commuter needs and travel patterns.

The Transport capital program includes a \$72.3 billion investment over the four years to 2026-27, including major investment in Sydney's transformational Metro projects.

Box 2.10: Urban Roads Fund

The NSW Government has committed \$770 million (capital and recurrent expenses) to establish an Urban Roads Fund (over four years to 2026-27). The funding will be used to plan and build major roads in metropolitan areas, including improvements to key corridors in Heathcote, Riverstone and smaller projects to improve roads in local communities.

Key projects include:

- planning for upgrades on Fifteenth Avenue Transit Corridor, which is a vital east-west connection between Liverpool and Bradfield providing a direct bus connection
- duplicating key sections of Heathcote Road
- upgrade of Bandon Road
- upgrade Henry Lawson Drive at Milperra
- upgrading Hill Road at Homebush.

Table 2.13: Key new Transport projects commencing in 2023-24 included in this Budget

Project	Estimated total cost	Expenditure over four years to 2026-27
More Accessible, Safe and Secure Train Stations		
Establishing a new combined fund to upgrade train stations to make them more accessible, safe and secure by combining the existing Transport Access Program fund with the Commuter Car Parking Program fund with additional \$300 million committed at the election.	n.a.	\$800.7 million
Urban Roads Fund		
Establishing an Urban Roads Fund to build major roads in metropolitan areas, including improvements to key corridors in Heathcote, Riverstone and smaller projects to improve roads in local communities.	n.a.	\$315.6 million
M7-M12 Integration Project		
Delivering the M7-M12 Interchange, the Elizabeth Drive Connection to the M12 and the Westlink M7 Widening to improve connectivity, travel time and safety of motorists travelling between major roads in the Western Parkland City (NSW and Australian Government funded).	n.a.	\$106.2 million
Bells Line of Road Upgrade Program		
Commencing safety upgrades to enable a safer journey on the scenic route between the Blue Mountains and Richmond (Australian Government funded).	n.a.	\$100.0 million
Western Distributor Smart Motorway		
Delivering technology improvements along the Western Distributor corridor between the Sydney Harbour Bridge and Anzac Bridge to provide an improved and smoother driving experience (NSW and Australian Government funded).	n.a.	\$95.7 million
Richmond Road, Elara Boulevard to Heritage Road		
Upgrading a 0.9-kilometre section of Richmond Road, north of Elara Boulevard. The upgrade will provide safer and improved access to fast growing residential developments in the Marsden Park precinct and future commercial and residential developments in the Marsden Park North precinct (NSW and Australian Government funded).	n.a.	\$58.0 million
Regional Roads Fund		
Capital component of \$46.6 million in the \$334.0 million Regional Roads Fund which will be used to build new roads in rural and regional areas.	n.a.	\$46.6 million
Parramatta Class ferries		
Procuring seven new Australian made NSW designed Parramatta Class ferries. The ferries will replace seven RiverCat vessels which have been in service for 25-30 years.	n.a.	\$43.0 million

Box 2.11: Western Sydney Flood Resilience

The NSW Government is investing \$200 million towards developing and delivering key flood evacuation routes as set out below. The Western Sydney Flood Resilience program is part of the Urban Roads Fund.

- **Richmond Road Upgrade – M7 to Townson Road:** The project will enable the development of adjoining precincts, unlock key land use activities in the burgeoning North West Growth Area, and support flood evacuation strategies.
- **Pitt Town Bypass:** The upgrade will include extending Pitt Town Road and adding two new roundabouts with a key focus on improving road safety, removing heavy vehicles from the town centre, and supporting the new residential development to the north of Pitt Town.
- **Garfield Road East Upgrade:** The upgrade of Garfield Road East between Windsor Road, Box Hill and Piccadilly Street, Riverstone, Hamilton Street and Edmund Street, and the enabling works for the 3.4-kilometre corridor upgrade. The enabling works package will consider a range of activities including detailed design, priority property acquisition, geotechnical works, utility installation, early stormwater and culvert investigations, integration with adjacent developments and other intersection improvements.
- **Upgrade the intersection of The Driftway and Londonderry Road:** This includes an additional southbound lane as part of upgrades to flood evacuation routes in the Hawkesbury Nepean Valley.

Table 2.14: Key State-wide Transport projects continuing in this Budget

Project	Estimated total cost	Expenditure over four years to 2026-27
Road Safety investment		
Continuing the Government's commitment to the Road Safety Action Plan to fund targeted and proven initiatives to improve road safety in New South Wales. The Towards Zero Safer Roads Program and Australian Government funded Road Safety works builds on existing investment in thousands of kilometres of audio-tactile line markings, wide centre lines, school safety infrastructure works, crash barriers in regional NSW and other life-saving infrastructure across the State.	n.a.	\$793.8 million
New Buses to cater for NSW Services		
Procuring new buses to deliver reliable services across New South Wales.	n.a.	\$521.8 million
Pinch Points		
Continuing NSW and Australian Government funded investment in small scale traffic improvements that provide big benefits to customers, including reduced congestion and travel times.	n.a.	\$270.7 million
Maritime Program		
Upgrading ferry wharves at South Mosman, Double Bay and Greenwich Point to improve accessibility in addition to the ongoing maintenance and upgrades to various regional maritime assets.	n.a.	\$103.3 million * *Excludes Kamay Ferry Wharves which is separately featured in Table 2.15

Project	Estimated total cost	Expenditure over four years to 2026-27
Active Transport		
Developing and delivering projects that expand connected cycleway networks, which increase opportunities for cycling and walking in and around connected centres. Active Transport projects encourage more people to choose walking and cycling as modes of transport.	n.a.	\$97.9 million

Box 2.12: Return Freshwater-class ferries to Circular Quay-Manly route

The NSW Government has committed to returning the Freshwater-class ferries to the Circular Quay to Manly route. The commitment will see an extensive refurbishment plan started to ensure the iconic vessels can be returned to the route for years to come.

The upgrade of the iconic vessels will include refreshed passenger areas and will improve the experience for passengers with a disability. The extensive refurbishments will focus on local manufacturing and jobs, with expert naval engineers, electrical engineers, shipbuilders, painters, plumbers and more all working here in New South Wales. Refurbishing each vessel includes the use of more than 650 square metres of new ceiling panels, seven kilometres of new cabling, 4,000 litres of paint, 750 square metres of new flooring and the recovering of every interior seat.

Box 2.13: New Parramatta Class Ferries

The NSW Government has committed to delivering seven new Australian made Parramatta Class vessels that have been designed by world renowned Sydney-based naval architects and constructed in Hobart, Tasmania.

The building of the first two vessels has already commenced, with the first vessel expected to enter sea trials in early 2024 before going into service.

Box 2.14: Active Transport

The NSW Government is committed to developing and delivering Active Transport projects that expand cycleway networks and increase opportunities for walking in and around connected centres and neighbourhoods.

It has committed funding to the delivery of both the Sutherland to Cronulla Active Transport Link (SCATL) Horizon 3 and the Sydney Harbour Bridge Northern Cycle Ramp.

SCATL Horizon 3

The final stage of the SCATL will improve connections and increase road safety for active transport users between Sutherland and Cronulla, as well as create links to key attractors along the corridor. The project will provide active transport dedicated paths and safe separation for both riders and walkers between activity hubs, key destinations, schools, employment, and local attractions.

Sydney Harbour Bridge Northern Cycle Ramp

The Northern Cycle Ramp will improve accessibility and safety for bike riders by avoiding the 55 cycleway steps at the northern end of the Sydney Harbour Bridge and improve pedestrian safety by removing conflicts with bike riders at Milsons Point.

Table 2.15: Key Sydney Metropolitan Transport projects continuing in this Budget

Project	Estimated total cost	Expenditure over four years to 2026-27
Sydney Metro West		
Delivering a new underground Metro line connecting Greater Parramatta with the Sydney CBD. The line will include metro stations at Westmead, Parramatta, Sydney Olympic Park, North Strathfield, Burwood North, Five Dock, The Bays, Pyrmont and Hunter Street in the Sydney CBD, linking communities to rail services. Note, this project is being considered in the comprehensive review into Sydney Metro projects.	n.a.	\$13.7 billion
Sydney Metro – Western Sydney Airport		
Delivering six new Metro stations to service the future Western Sydney International (Nancy-Bird Walton) Airport and the Western Sydney Aerotropolis, interchanging with the T1 Western Line at St Marys (NSW and Australian Government funded).	n.a.	\$7.9 billion
Western Harbour Tunnel Upgrade		
Continuing the delivery of the first stage of tunnelling works for a new crossing of Sydney Harbour. The first package will include construction of 1.7 kilometres of mainline tunnels from Rozelle to Birchgrove. The second package includes construction of northern tunnels from Birchgrove, through Sydney Harbour and onto North Sydney, the marine work and all the tunnel fit-out.	n.a.	\$4.7 billion
Sydney Metro City and Southwest		
Delivering an extension of Sydney Metro Northwest from Chatswood, under Sydney Harbour, through new CBD stations and southwest to Bankstown. The line will include Metro stations at Crows Nest, Victoria Cross (North Sydney), Barangaroo, Pitt Street and Waterloo, new underground Metro platforms at Martin Place and Central stations, and 11 upgraded stations between Sydenham and Bankstown.	n.a.	\$3.3 billion
Connecting Sydney Roads		
Upgrading the Sydney road network to support population and employment growth in Sydney. Key projects include: <ul style="list-style-type: none"> • Mulgoa Road Stage 1 – Blaikie Road to M4 Motorway (NSW and Australian Government funded) • Mulgoa Road Stage 2 – Glenmore Parkway to Jeanette Street (NSW and Australian Government funded) • Mulgoa Road Stage 5 - Blaikie Road to Union Road (NSW and Australian Government funded) • The Horsley Drive, M7 motorway to Cowpasture Road (NSW and Australian Government funded) • Appin Road Improvements (Australian Government funded) • Spring Farm Parkway Stage 1. 	n.a.	\$3.0 billion
More Trains, More Services		
Continuing the program to simplify and modernise the rail network and integrate Sydney Metro City and Southwest with Sydney's train network. Customers can expect more frequent train services with shorter wait times and reduced crowding, including additional services on the Illawarra, Airport and South Coast lines.	n.a.	\$2.7 billion

Project	Estimated total cost	Expenditure over four years to 2026-27
<p>M6 Extension Stage 1</p> <p>Continuing the extension works which will, on completion, remove more than 2,000 trucks a day from surface roads, enable motorists to bypass up to 23 sets of traffic lights on the Princes Highway and enhance pedestrian and cyclist safety through shared pathways.</p>	\$3.1 billion	\$1.5 billion
<p>Warringah Freeway Upgrade</p> <p>Continuing upgrades of the Warringah Freeway for surface roads, bridges and interchanges along 4-kilometres of the freeway corridor, which started in early 2022.</p>	n.a.	\$1.3 billion
<p>The M12 Motorway</p> <p>Continuing to deliver a new motorway as part of the Western Sydney Infrastructure Plan. The project, funded by the NSW and Australian Governments, will provide direct access to the Western Sydney International (Nancy-Bird Walton) Airport, running east to west, linking the M7 Motorway, The Northern Road and Elizabeth Drive. It will also improve the freight movement in and through Western Sydney.</p>	n.a.	\$1.1 billion
<p>WestConnex</p> <p>Finalising the delivery of the Rozelle Interchange.</p>	\$16.8 billion	\$710.4 million
<p>Sydney Gateway</p> <p>Expanding and improving the existing road and freight rail networks to provide a new route for around 10,000 trucks a day. This will divert trucks from local streets in Mascot by providing an alternate route, thereby reducing travel times and congestion, and returning local streets back to the community.</p>	\$2.6 billion	\$653.3 million
<p>New Hawkesbury River crossing at Richmond</p> <p>Providing a new bridge over the Hawkesbury River between Richmond and North Richmond through a joint NSW and Australian Government funded initiative. The project will deliver journey time reliability, safer connections along the road corridor and improve flood resilience.</p>	n.a.	\$433.1 million
<p>Parramatta Light Rail Stage 1</p> <p>Continuing construction of the Light Rail from Westmead to Carlingford via the Parramatta CBD and Camellia with a 12 kilometre two-way track, to support growth in Western Sydney, connecting new communities and places. The Light Rail is estimated to service 28,000 people every day with an estimated 130,000 people living within walking distance of light rail stops.</p>	\$2.9 billion	\$374.1 million
<p>Circular Quay Precinct Renewal (Planning)</p> <p>Commitment to upgrading the promenade and ferry wharves at Circular Quay to make them compliant with modern accessibility standards. Renewal of the promenade will remove the current load limits and associated restrictions on emergency service access to the precinct.</p>	n.a.	\$335.1 million
<p>M5 Motorway, Moorebank Avenue and Hume Highway Intersection Upgrade</p> <p>Delivering the M5 Westbound Traffic Upgrade, funded by NSW and Australian Governments, which will provide a new two-lane bridge over Georges River and rail line, and a new underpass at Moorebank Avenue. These upgrades will reduce congestion and improve travel times, accessibility and connectivity of road networks.</p>	n.a.	\$268.9 million

Project	Estimated total cost	Expenditure over four years to 2026-27
Mamre Road, M4 Motorway to Erskine Park Road		
Widening 3.8 kilometres of Mamre Road, between the M4 Motorway and Erskine Park Road, from a two-lane undivided road to a four-lane divided road, with provision for two additional lanes in the future. This upgrade will provide a safer and higher capacity link.	n.a.	\$253.6 million
Prospect Highway, Reservoir Road to St Martins Crescent		
Continuing the upgrade of a 3.6-kilometre section of the Prospect Highway between Reservoir Road, Prospect and St Martins Crescent, Blacktown to a four-lane divided carriageway with funding provided by the NSW and Australian Government. The section north of Lancelot Street will be upgraded to a six-lane divided road, inclusive of two dedicated bus lanes, and improvements will be made to 11 intersections along the route. The upgrade will improve road safety for all road users, reduce congestion leading to improved travel times, and increase network efficiency.	\$280.0 million	\$140.3 million
Hill Road Upgrade		
Upgrading Hill Road between Parramatta Road and Old Hill Link Road to improve connectivity to Carter Street Precinct and Sydney Olympic Park.	n.a.	\$122.0 million
Henry Lawson Drive Upgrade		
Continuing construction of Stage 1 which involves widening between Tower Road, Georges Hall and Auld Avenue, Milperra to double capacity and reduce congestion. Continuing development of Stage 2 between Keys Parade and the M5 Motorway.	n.a.	\$115.9 million
Heathcote Road, Infantry Parade Hammondville to the Avenue, Voyager Point		
Widening and upgrading a 2.2-kilometre section of Heathcote Road between Infantry Parade and The Avenue to a four-lane divided road, and upgrading intersections at Heathcote Road and The Avenue, and at Heathcote Road and Macarthur Drive. The project, funded by NSW and Australian Governments, also duplicates the existing bridges at Harris Creek, Williams Creek and over the railway line, as well as providing active transport connections along Heathcote Road.	\$183.0 million	\$112.4 million
King Georges Road, Stoney Creek Road to Connells Point Road		
Widening King Georges Road from two lanes to three lanes in each direction and constructing a dedicated right turn lane for south bound motorists turning into Percival Street. The upgrade will benefit an estimated 43,000 motorists by reducing congestion, improving travel times and boosting safety for all users (NSW and Australian Government funded).	n.a.	\$110.9 million
Memorial Avenue, Old Windsor Road to Windsor Road		
Upgrading Memorial Avenue to a four-lane road to meet the future transport demands of Sydney's north-west (with allowance for future widening to six lanes), reducing travel times and congestion for motorists and improving safety as part of the Western Sydney Growth Roads Program.	\$224.0 million	\$93.5 million
Homebush Bay Drive		
Upgrading the intersection of Homebush Bay Drive, Australia Avenue and Underwood Road. The project, funded by NSW and Australian Governments, will ease congestion, increase safety and improve travel times to Homebush and Sydney Olympic Park.	n.a.	\$92.8 million

Project	Estimated total cost	Expenditure over four years to 2026-27
Macquarie University Station Transport Interchange		
A bus interchange and precinct upgrade that creates a place for people to enjoy, meet and connect. Connecting people to Macquarie University, Macquarie Centre, Macquarie Business Park and residential and commercial areas.	n.a.	\$81.4 million
The upgrade will improve travel efficiency and connectivity, making it easier for people to move safely into and around Macquarie Park (NSW and Australian Government funded).		
Kamay Ferry Wharves		
Reinstating multi-user wharves at La Perouse and Kurnell. They will provide better access to the Kurnell Precinct, improving physical and cultural links. The project will also improve access and facilities for recreational vessels and fishing.	\$78.0 million	\$57.2 million
Sydney Metro – Western Sydney Airport – Stage 2 Planning		
Developing a final business case for a south-eastern extension of the Sydney Metro – Western Sydney Airport project from the current southern terminus at Aerotropolis to Glenfield (NSW and Australian Government funded).	n.a.	\$38.5 million
Heathcote Road – The Avenue to the Princes Highway (Planning)		
Continuing planning and development for the duplication of approximately 18 kilometres of Heathcote Road between The Avenue at Voyager Point and Princes Highway at Engadine, funded by NSW and Australian Governments. The upgrade will increase capacity and create a safer environment.	n.a.	\$31.9 million

Box 2.15: Parramatta Light Rail Stage 2

The NSW Government has committed an additional \$200 million (funded via a reservation in Restart NSW) to expedite the planning of the procurement, construction, and delivery of Parramatta Light Rail Stage 2 for Western Sydney.

Stage 2 of the Parramatta Light Rail will connect Stage 1 and Parramatta’s CBD to Sydney Olympic Park via Camellia, Rydalmere, Ermington, Melrose Park and Wentworth Point. It is a vital project for achieving housing growth and connecting communities in the Greater Parramatta and Olympic Peninsula, bringing the vision of a ‘30-minute city’ closer to reality.

Planning approval for the entire project is expected in early 2024, and procurement is progressing on the enabling works to build the vital 320-metre-long public and active transport bridge across the Parramatta River, connecting Wentworth Point and Melrose Park.

Figure 2.1: Parramatta Light Rail proposed route

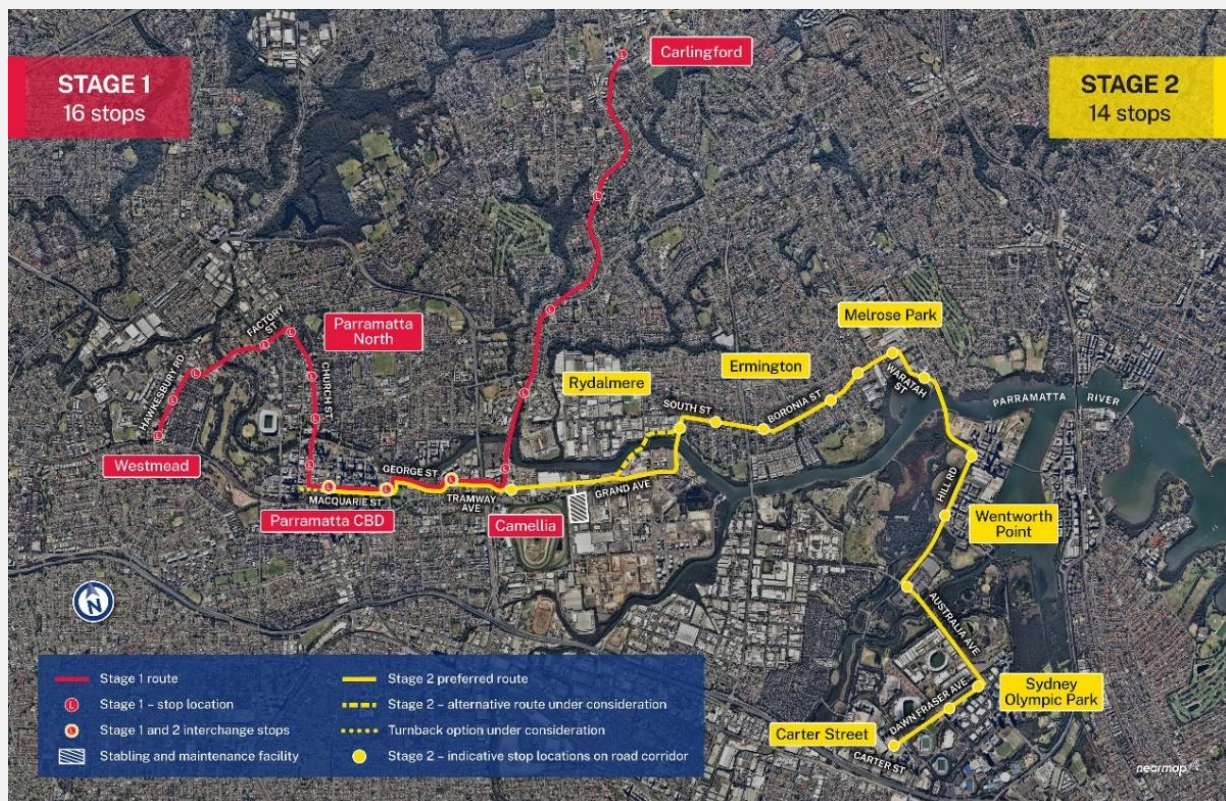


Table 2.16: Key Regional and Outer Metro Transport projects continuing in this Budget

Project	Estimated total cost	Expenditure over four years to 2026-27
Princes Corridor Upgrade		
Continuing investments for priority projects including:		
<ul style="list-style-type: none"> Jervis Bay Road Intersection, to improve safety, reduce congestion and improve access to local roads (NSW and Australian Government funded) Jervis Bay to Sussex Inlet Upgrade (Stage 1) between Jervis Bay Road and Hawken Road (NSW and Australian Government funded) Milton-Ulladulla Bypass to improve safety, journey times and freight efficiency (NSW and Australian Government funded) Nowra Bridge, to provide a new four lane bridge over the Shoalhaven River, upgraded intersections and additional lanes on the Princes Highway (NSW and Australian Government funded) Princes Highway Safety and Freight Productivity Upgrades (Planning). 	n.a.	\$1.6 billion
Pacific Motorway (M1) to Raymond Terrace and Hexham Straight Widening		
Commencing main works construction of the upgrade to connect the M1 Pacific Motorway and the Pacific Highway, and major construction on the Hexham Straight Upgrade between Newcastle Inner City Bypass and Hexham Bridge (NSW and Australian Government funded).	\$2.2 billion	\$1.5 billion
Regional Rail Fleet		
Delivering a modern Regional Rail Fleet to replace the ageing XPT, XPLOER and Endeavour trains and improve travel. Construction of a purpose-built maintenance facility in Dubbo.	n.a.	\$1.4 billion
Coffs Harbour Bypass		
Continuing the NSW and Australian Government funded Pacific Highway upgrade program to improve connectivity, road transport efficiency and safety for local and interstate motorists.	\$2.2 billion	\$1.3 billion
Mariyung Fleet (New Intercity Fleet)		
Delivering a new, state of the art fleet and associated power supply upgrades to provide a new level of comfort and convenience and improve accessibility and safety for customers who travel between Sydney, the Central Coast and Newcastle, the Blue Mountains and the South Coast.	n.a.	\$1.2 billion
New England Corridor Upgrade		
Commencing preconstruction of the bypass for Singleton, funded by NSW and Australian Governments, to improve traffic flow, travel times and safety for motorists. Also, planning will commence on key NSW and Australian Government funded projects for realignment at Rocky Cut north of Scone and Goonoo Goonoo Road in Tamworth.	n.a.	\$653.3 million
Newell Corridor Upgrade		
Continuing the NSW and Australian Government funded works for delivery of 38 new overtaking lanes, Parkes bypass, new Dubbo Bridge, heavy duty pavement upgrades, and flood mitigation works along the corridor.	n.a.	\$532.7 million

Project	Estimated total cost	Expenditure over four years to 2026-27
Great Western Highway – Medlow Bath and Coxs River Road		
Continuing construction of the duplication of 1.1 kilometres of the Great Western Highway through the Medlow Bath urban area, and duplication on the Little Hartley to Lithgow section of the Great Western Highway at Coxs River Road (NSW and Australian Government funded).	n.a.	\$316.8 million
Mount Ousley Interchange		
Commencing construction of the interchange to replace the existing intersection of the M1 Princes Motorway and Mount Ousley Road at the base of Mount Ousley (NSW and Australian Government funded).	n.a.	\$277.8 million
Newcastle Inner City Bypass from Rankin Park to Jesmond		
Continuing construction on the final stage of the Newcastle Inner City Bypass between the Pacific Highway at Bennetts Green and the final stage of the Pacific Highway at Sandgate, funded by NSW and Australian Governments. The Bypass provides improved traffic flows across the western suburbs of Newcastle and connectivity to Bennetts Green, Charlestown and Jesmond shopping centres, the John Hunter Hospital precinct at New Lambton Heights and the University of Newcastle at Callaghan with connections to the Pacific Highway. This will help to improve access for staff, patients and visitors travelling to and from the hospital precinct.	\$450.0 million	\$270.8 million
Muswellbrook Bypass, New England Corridor		
Continuing planning and early works construction for the Muswellbrook bypass to improve travel times for long-haul freight movements and safety for all road users on the New England Highway (NSW and Australian Government funded).	n.a.	\$212.9 million
Main Western Rail Line Capacity Enhancements (Planning)		
Continuing to develop projects on the Main Western Rail Line to upgrade and improve capacity for passenger and freight rail services and support economic growth in regional NSW.	n.a.	\$127.5 million
Connecting Central Coast Roads		
Continuing planning and delivery of road projects in the Central Coast area including:		
<ul style="list-style-type: none"> Pacific Highway, Wyong Town Centre (NSW and Australian Government funded) Central Coast Highway, Tumby Road Intersection Upgrade for the construction of the fast-tracked intersection at Tumby Road (NSW and Australian Government funded). 	n.a.	\$126.4 million
Barton Highway		
Continuing improvements on the Barton Highway duplication. This work will improve road safety while enhancing tourism, driving economic growth and creating vibrant regional spaces (NSW and Australian Government funded).	n.a.	\$114.1 million
Picton Road Upgrade (Planning)		
Continuing planning the upgrade of Picton Road to improve safety and connectivity as a key link for the Illawarra Region, South Coast, Sydney, Canberra and Melbourne (NSW and Australian Government funded).	n.a.	\$108.9 million
Fixing Country Rail Program		
Providing improved capacity, access, efficiency and reliability of the regional rail network, as well as delivering a highly functional transport network for moving freight in and out of regional areas.	n.a.	\$95.9 million

Project	Estimated total cost	Expenditure over four years to 2026-27
Mandalong Road Upgrade		
Continuing development of the Mandalong Road upgrade (NSW and Australian Government funded).	n.a.	\$58.8 million
Waterfall Way Upgrade		
Upgrading sections of Waterfall Way to improve safety, reliability and travel times, and addressing safety for pedestrians and traffic in the Dorrigo town centre.	\$50 million	\$35.2 million
Hume Highway Upgrade		
Continuing to replace sections of the existing concrete pavement surface on the Hume Highway at Marulan.	n.a.	\$27.1 million
Marshalls Creek Bridge		
Widening the Sturt Highway to four lanes over Marshalls Creek Bridge. The upgrade will improve safety and ease congestion on the highway through Wagga Wagga.	n.a.	\$23.0 million

Box 2.16: Pacific Highway, Extension to Raymond Terrace and Hexham Straight

The Australian and NSW Governments have committed \$2.2 billion to deliver the M1 Pacific Motorway extension to Raymond Terrace and Hexham Straight projects. The M1 Motorway extension will boost the regional economy and improve connectivity, road transport efficiency and safety for local and interstate motorists.

The project addresses a key national motorway ‘missing link’ between Sydney and Brisbane as the existing M1 Pacific Motorway, New England Highway and Pacific Highway carry some of the highest traffic volumes across the Hunter.

The project includes a 15-kilometre dual carriageway motorway link between the M1 Pacific Motorway south of John Renshaw Drive, and the Pacific Highway at Raymond Terrace, bypassing Hexham and Heatherbrae. Key features include four interchanges at Black Hill, Tarro, Tomago and Raymond Terrace, and an additional crossing of the Hunter River, to improve safety and relieve traffic congestion.

The extension will provide:

- improved connection between the M1 Pacific Motorway and the Pacific Highway
- improved traffic flow for motorists and freight for more reliable travel times
- improved accessibility to the surrounding road network
- improved safety for all road users.

Figure 2.2: Pacific Highway, Extension to Raymond Terrace and Hexham Straight



Final design subject to change following detailed design process

Box 2.17: Coffs Harbour Bypass

The Coffs Harbour Bypass Project is jointly funded by the Australian and NSW Governments. The project includes building or upgrading 14 kilometres to a four lane road which will improve transport efficiency and road safety for local, regional and interstate road users. The project will save motorists 12 minutes travel time, bypass up to 12 sets of traffic lights and remove thousands of vehicles from the Coffs Harbour CBD.

The project is a priority for both Governments as the Pacific Highway is a major contributor to Australia’s economy. The bypass will be a key link in this vital piece of the nation’s infrastructure, connecting Melbourne, Sydney and Brisbane.

The upgrade will:

- improve road safety for local, regional and interstate motorists
- deliver road freight efficiency for heavy vehicles
- ease congestion.

Figure 2.3: Coffs Harbour Bypass



Box 2.18: Jervis Bay Road and Princes Highway Intersection

The Jervis Bay Road and Princes Highway intersection has the highest volume of vehicle movements on the highway between Nowra and the border with Victoria.

The Australian and NSW Governments are investing \$164 million on the intersection upgrade. A more reliable intersection will support pedestrians, cyclists, and public transport passengers to travel safely.

The upgrade will also reduce congestion, improve access to local roads and growing tourist and residential areas, improve network resilience and support the growth of regional economies.

Following the environmental assessment and community feedback on the concept design, the Jervis Bay Road and Princes Highway intersection upgrade project has been approved for construction.

The intersection upgrade will include:

- widening the road to a four-lane divided highway, with two lanes in each direction
- building an overpass bridge over Jervis Bay Road
- building two roundabouts at the existing road level to enable safer access and improve traffic flow
- building an access road to service properties located to the south-east of the intersection.

Pages 4-58 to 4-64 of Chapter 4 of this *Infrastructure Statement* lists the major capital projects and minor works for the Transport agencies, including the ETC, estimated expenditure to 30 June 2023, and 2023-24 allocation.

2.9 Treasury (including Office of Energy and Climate Change and Infrastructure NSW)



The Treasury infrastructure program is predominantly focussed on delivering the Electricity Infrastructure Roadmap. This function is performed by EnergyCo and the Office of Energy and Climate Change.

Responsibility for delivering the Roadmap will be transferred to the new Department of Climate Change, Energy, the Environment and Water from 1 January 2024. The Roadmap will guide the transition of New South Wales to renewable energy over the next decade, principally by supporting Renewable Energy Zones located in regional New South Wales. The program also includes investment to support Treasury's economic and financial management responsibilities.

\$4.5 billion

Capital Expenditure to 2026-27

\$1.8 billion

Capital Expenditure 2023-24

Infrastructure NSW is creating a sustainable infrastructure legacy for New South Wales by providing independent advice and assurance to government on the identification and prioritisation of critical public infrastructure and leading the development of urban projects and precinct transformations.

Box 2.19: Renewable Energy Zones

Renewable Energy Zones (REZs) will group new wind and solar power generation into locations where it can be efficiently stored and transmitted across New South Wales. Additional capital funding of \$804.0 million will support the delivery of the Electricity Infrastructure Roadmap through maintaining critical path for the Central-West Orana REZ, New England REZ and Hunter Transmission Project. Five zones have so far been identified in the Central West Orana, New England, South West, Hunter Central Coast and Illawarra regions of the State. The REZs will keep NSW electricity reliable as coal-fired power stations retire, delivering large amounts of new energy to power our regions and cities.

- The Central-West Orana REZ is approximately 20,000 square kilometres around Dubbo and Dunedoo and will unlock up to 6 gigawatts intended network capacity. The REZ is also expected to support around 5,000 construction jobs in the region.
- The New England REZ is located around Armidale and has an intended network capacity of 8 gigawatts. It is expected to support around 830 operational jobs and 1,250 construction jobs.
- The South West REZ is located around Balranald and Hay and at its peak is expected to support over 2,000 construction jobs in the region.
- The Illawarra REZ is located around Wollongong and Shellharbour and will utilise rehabilitated industrial land, port and transport infrastructure. The recent Registration of Interest indicated over 17 gigawatts of generation and storage capacity.
- The Hunter-Central Coast REZ is located around Newcastle and Muswellbrook. The recent Registration of Interest indicated almost 40 gigawatts of renewable generation and storage capacity.

The Transmission Acceleration Facility (TAF) has been established to develop transmission projects to the stage where they can be delivered by a private operator who will pay for the costs incurred to date, at which point the cash receipt will be reflected in the budget. The forward estimates do not include the \$1.6 billion in anticipated receipts from the recycling of the State's investment to develop the Central West Orana (CWO) Transmission project. The planned cash receipt from the anticipated transaction with the Network Service Operator for the CWO REZ will be budgeted for when the transaction is finalised, as will be the case for other major asset transactions as part of the energy transition.

Box 2.20: Energy Security Corporation

The NSW Government is committed to establishing an Energy Security Corporation (ESC) to accelerate investment and ensure dispatchable supply of clean energy.

The ESC will be seeded with a \$1.0 billion reservation from the Restart NSW Fund. Following the model of the Clean Energy Finance Corporation, the Energy Security Corporation will support projects that traditionally find it harder to get off the ground, but which New South Wales needs to accelerate the transition.

The role of the ESC will be to partner with industry on projects that provide affordable, accessible and reliable energy to New South Wales. This includes renewable storage solutions, commercially viable technologies able to provide grid stability and community batteries to maximise the benefits for households of rooftop solar.

Box 2.21: Electric Vehicles Charging Infrastructure

The NSW Government aims to increase electric vehicle sales to more than 50 per cent of new cars sold in New South Wales by 2030. To achieve this, the Government is investing:

- \$263.0 million in new (recurrent) funding to deliver the Electric Vehicle Strategy, including additional EV infrastructure
- \$149.0 million to co-fund the delivery of ultra-fast EV charging stations
- \$20.0 million for co-funding EV charging infrastructure in commuter carparks
- \$20.0 million to co-fund destination charging along tourist routes
- \$10.0 million to co-fund about 500 kerbside charge points in areas of metropolitan NSW where residents do not have access to off-street parking
- \$10.0 million to co-fund upgrades to electrical infrastructure in about 100 medium and large apartment buildings.

The NSW Government is also investing \$105.0 million to support private and local council fleets to purchase EVs and is committed to electrifying its own passenger vehicle fleet.

Table 2.17: Key Treasury projects continuing in this Budget

Project	Estimated total cost	Expenditure over four years to 2026-27
Transmission Acceleration Facility		
The Facility will help fast-track critical energy infrastructure to deliver lower cost and more reliable energy for all NSW consumers. Additional capital funding of \$804 million will support the delivery of the Electricity Infrastructure Roadmap through maintaining critical path for the Central-West Orana Renewable Energy Zone, New England Renewable Zone and the Hunter Transmission Project. Development funding supported by the Facility is intended to be recovered from private investors thereby replenishing the Facility to support further projects until final repayment in 2040.	\$4.4 billion	\$3.5 billion
New Sydney Fish Market		
The New Fish Market is a reimagination of the iconic precinct, which is expected to attract 6 million visitors annually. Construction of the new Fish Market is expected to be completed in late 2024.	\$836.0 million	\$477.7 million
Barangaroo Precinct		
Continue the transformation of the Barangaroo precinct including the delivery of a 1.85 hectare public park on Sydney's Harbour, the fit-out of the Cutaway, a new public pavilion and other capital projects to enhance local amenity, along with ongoing sustainability, art and culture initiatives.	\$622.3 million	\$325.0 million
Zero and Low Emission Vehicle Reform		
The NSW Government's Electric Vehicle Strategy supports NSW's increased uptake of electronic vehicles as part of emission reduction and energy production goals.	\$260.6 million	\$95.5 million
Blackwattle Bay Urban Renewal		
The urban renewal of Blackwattle Bay is a rare opportunity for new housing, employment and harbourfront community spaces located less than 1 kilometre from the Sydney CBD.	\$79.3 million	\$71.1 million

Pages 4-65 to 4-66 of Chapter 4 of this *Infrastructure Statement* lists the major capital projects and minor works for the Treasury agencies, including the ETC, estimated expenditure to 30 June 2023, and 2023-24 allocation.