



NSW BUDGET 2023-24

Our plan for Western Sydney

Acknowledgement of Country

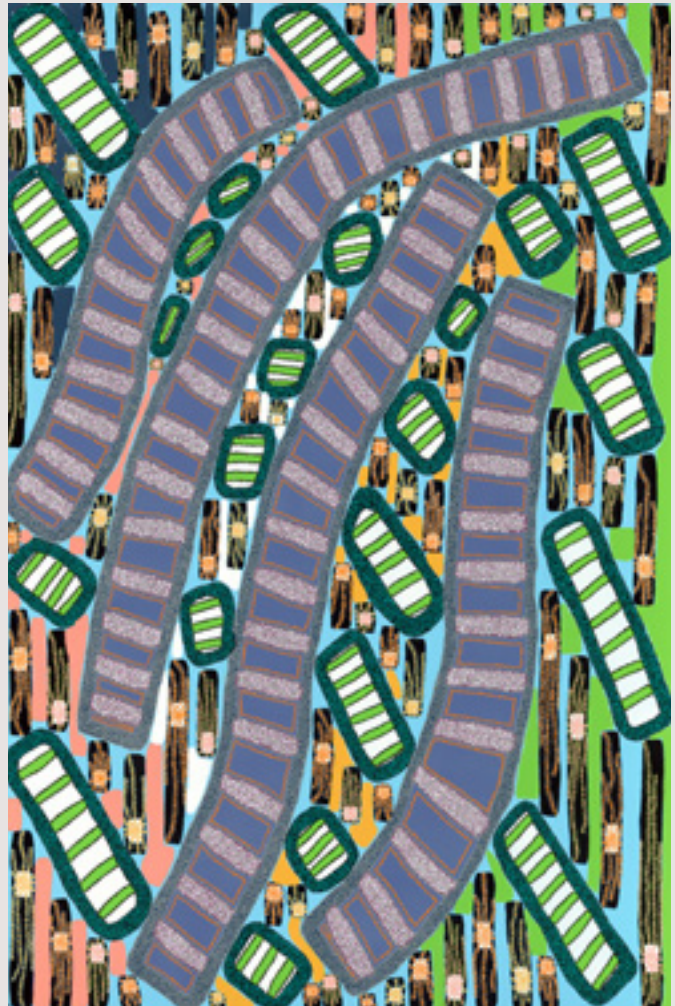
We acknowledge that Aboriginal and Torres Strait Islander peoples are the First Peoples and Traditional Custodians of Australia, and the oldest continuing culture in human history.

We pay respect to Elders past and present and commit to respecting the lands we walk on, and the communities we walk with.

We celebrate the deep and enduring connection of Aboriginal and Torres Strait Islander peoples to Country and acknowledge their continuing custodianship of the land, seas and sky.

We acknowledge the ongoing stewardship of Aboriginal and Torres Strait Islander peoples, and the important contribution they make to our communities and economies.

We reflect on the continuing impact of government policies and practices, and recognise our responsibility to work together with and for Aboriginal and Torres Strait Islander peoples, families and communities, towards improved economic, social and cultural outcomes.



Artwork:
Regeneration by Josie Rose

Contents

Foreword	5
Our vision for Western Sydney	7
1. Supporting residents with the cost of living	10
2. Rebuilding essential services	18
3. Supporting communities	28
4. Empowering Aboriginal and Torres Strait Islander people and Closing the Gap	30
5. Celebrating culture	32
6. Protecting our environment and preparing for disasters	34
7. Industry, business and job support	36

Data note: Figures provided for spending commitments are for the four years to 2026-27, and include recurrent and capital expenditure, unless otherwise noted.



Foreword



The Deputy Premier and I are proud products of Western Sydney.

We have both seen the changes that this vast and dynamic part of Sydney has undergone over the past 40 years.

The challenges we have identified in the Budget are acute in Western Sydney. The cost of living. The lack of affordable housing. And the need to rebuild essential services and to respect and reward the people who provide them.

This Budget will see people in Western Sydney receive assistance with the cost of living, and benefit from our long-term plan to rebuild essential services and confront the housing crisis.

Programs specific to Western Sydney include:

- an additional **\$400 million** for expansion of the **\$700 million** Rouse Hill Hospital
- investing **\$3.5 billion** in Western Sydney schools
- an additional **\$1 billion** to complete Sydney Metro City and Southwest
- **\$374.1 million** to complete construction of Stage 1 of the Parramatta Light Rail

- an additional **\$200 million** to expedite planning for the procurement, construction, and delivery of the Parramatta Light Rail Stage 2
- **\$7.9 billion** with the Australian Government for the Sydney Metro – Western Sydney Airport.

Our housing plan includes increased help to save people buying their first home up to \$30,735 in stamp duty. A **\$2.2 billion** Housing Infrastructure Plan will build more houses, and our Essential Housing Package will benefit residents of public and social housing.

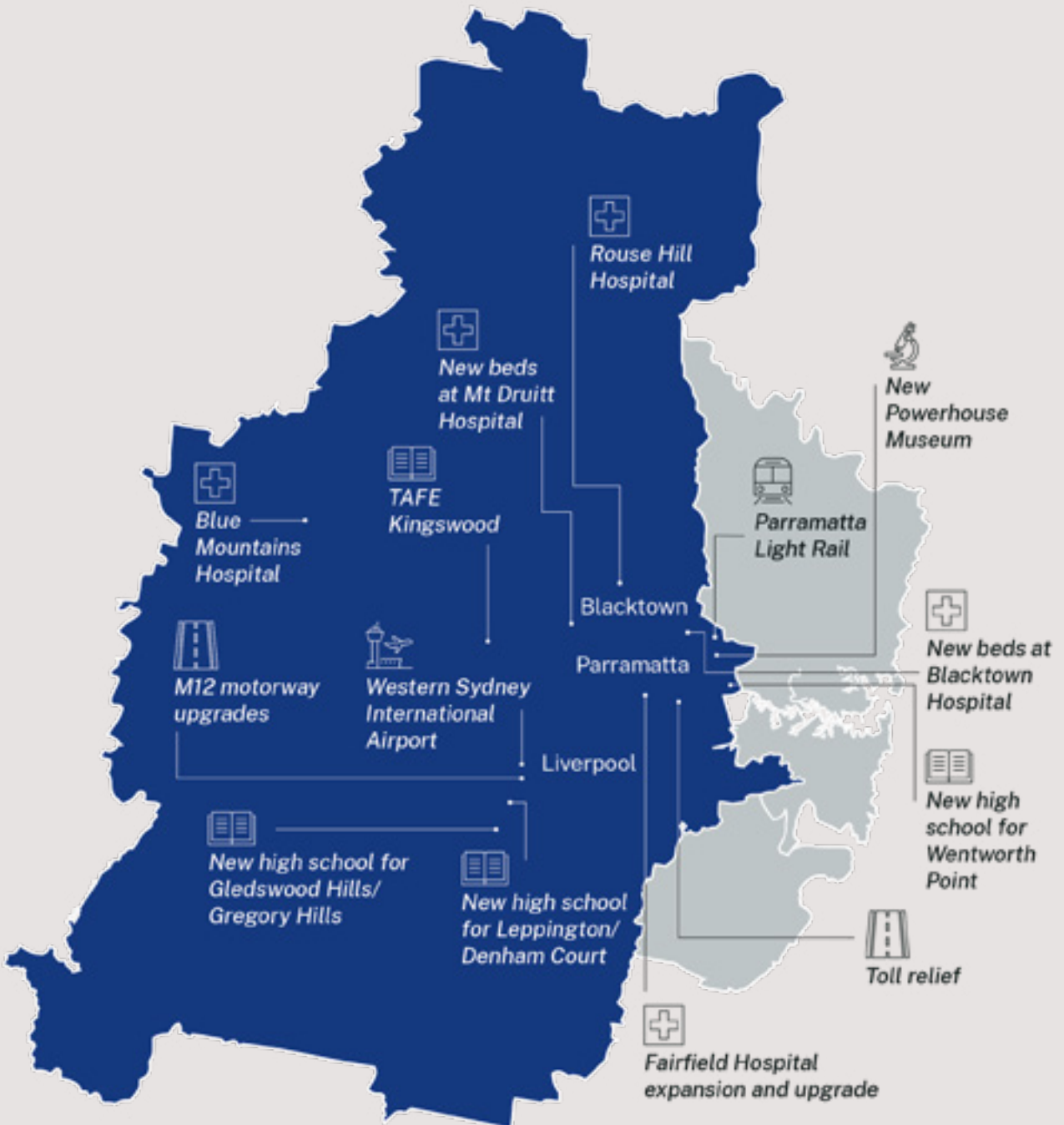
We are also supporting jobs and communities in Western Sydney with programs that provide:

- **\$47.8 million** for the Multicultural Communities Support Package which includes support for community languages schools, and the creation of a **\$30 million** Multicultural Capital Partnership Fund
- **\$15 million** towards keeping places of worship safe
- **\$80.6 million** to ensure koalas continue to live in southwest Sydney.

The Hon. Daniel Mookhey MLC
NSW Treasurer

The Hon. Prue Car MP
Deputy Premier
Minister for Education and Early Learning
Minister for Western Sydney
Minister for Skills, TAFE and Tertiary Education

Greater Western Sydney includes the following Local Government Areas: Blacktown, Blue Mountains, Camden, Campbelltown, Canterbury Bankstown, Cumberland, Fairfield, Hawkesbury, Liverpool, Parramatta, Penrith, The Hills and Wollondilly.



Western Sydney

This map indicates examples of NSW Government-funded projects

Our vision for Western Sydney

Western Sydney is the fastest-growing and most diverse region of New South Wales. More than 2.65 million people live in the 13 Local Government Areas that make up Western Sydney – 32.5 per cent of the population of New South Wales. More than 454,000 households comprise families with children, and 987,000 (37.9 per cent) people speak a language other than English at home.

Western Sydney is home to Australia's largest urban Aboriginal and Torres Strait Islander population, with 54,498 people or 2.1 per cent of the total population identifying as Aboriginal and/or Torres Strait Islander in 2021.

This diversity and dynamism is reflected in the region's businesses, economic output, and workforce. Western Sydney has more than 108,000 employing businesses and accounted for about one fifth of New South Wales' gross state product in 2021-22.

Western Sydney accounts for 31.4 per cent of the State's workforce. More than a quarter of the NSW Public Sector works in Western Sydney, the majority providing essential services to the community.

The NSW Government is focused on rebuilding the essential services the people of Western Sydney rely on. Investment in a high-quality education system and world-class healthcare supports quality of life and greater workforce participation.



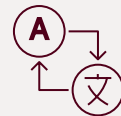
2.65
million

Western Sydney
residents



454,000

households
with children



37.9%

of households speak
a language other than
English at home



108,000

employing businesses

Removing the wages cap will provide essential workers (like teachers, health workers, and police) a greater opportunity to negotiate pay and conditions, help attract more people to these professions, and address the retention crisis in our essential services.

The unemployment rate is historically low (sitting at just 4.1 per cent in Western Sydney), and economic activity in the State has expanded in 2022-23. However, the benefits of the increase in economic activity are not felt universally.

Western Sydney residents face acute challenges as a result of inflation and housing pressures. Since May 2022, the Reserve Bank of Australia has raised

interest rates 12 times to 4.1 per cent. Consequently, the average new home loan repayment has increased by \$17,300 a year. A typical dual-income household in Western Sydney would now need 34.6 per cent of their after tax earnings to service a new mortgage, up from 22.3 per cent before the COVID-19 pandemic.

Housing construction remains below the levels needed to reach the Housing Accord target. Between the start of 2020 and May 2023, house prices rose by 32.2 per cent in Western Sydney, and rents increased by 23.1 per cent, exacerbating cost-of-living pressures for Western Sydney residents.





Addressing the housing affordability crisis will require sustained effort for many years. The NSW Government is taking the first step to address housing related cost pressures with an initial package of housing and rental support measures that will support Western Sydney households.

In addition, we are delivering cost-of-living relief to the people of Western Sydney including through a significant toll relief program, expansion of energy bill relief for families and seniors, and an extension of fee relief to support the cost of preschool.

The NSW Government is committed to celebrating this great region by supporting communities and community infrastructure, from investing in our Multicultural Communities Support

Package to delivering the new Powerhouse Museum in Parramatta.

We are committed to the successful opening of the Western Sydney International Airport in 2026 and the essential infrastructure necessary for this once-in-a-generation investment. We are completing Stage 1 of the Parramatta Light Rail, and investing in a responsible long-term plan to improve health, education and transport infrastructure and services across Western Sydney.

Through this Budget, we have prioritised a pipeline of upgrades and builds for hospitals, schools, transport, and housing across Western Sydney to ensure residents have better access to essential public services.

Supporting
residents with
the cost of living



1

The people of New South Wales are facing a cost-of-living crisis. Over the past two years, prices for essentials have risen by 13.3 per cent.

Residents of Western Sydney are disproportionately affected. They earn \$2,863 a year less than the Greater Sydney median and have a higher unemployment rate than the New South Wales rate.

This Budget delivers immediate support for Western Sydney residents to assist with the rising cost of living.

Toll relief

Over the past decade, Sydney has become one of the most tolled cities in the world. Communities in Western Sydney have been heavily impacted by the high concentration of toll roads and limited public transport options. The **\$615.0 million** toll – relief program will support motorists as the NSW Government embarks on long-term toll reform to create a fair and equitable road network.

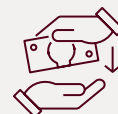
\$60 weekly toll cap

A return daily commute by car from southwest Sydney to the Sydney CBD costs up to \$34.90 in tolls, or \$174.50 per week (as of September 2023). With a \$60 weekly toll cap, these residents who commute daily by car will save up to \$114.50 per week and \$5,500 a year.



13.3%

rise in price of essentials over the past two years in New South Wales



\$2,863

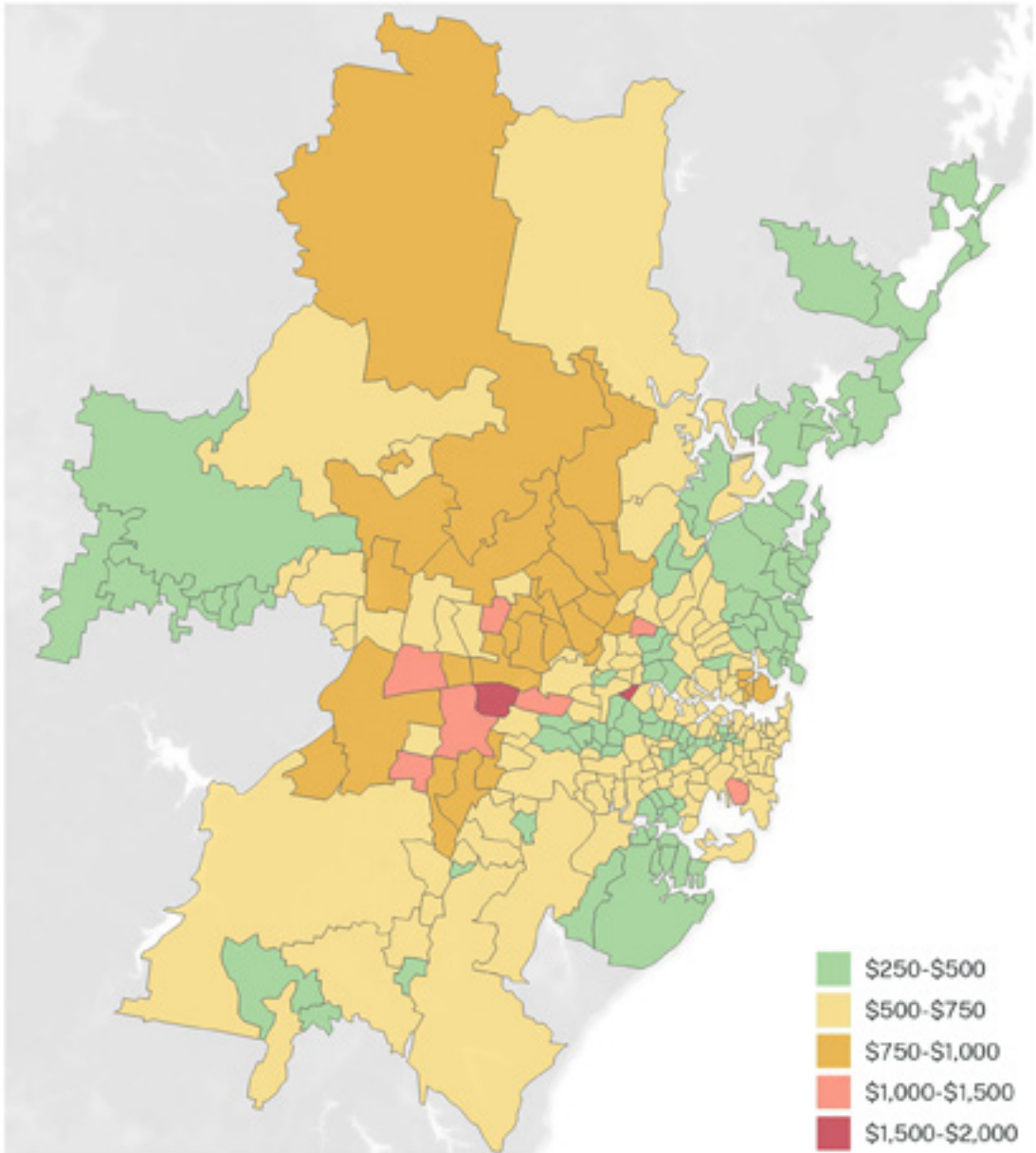
difference in annual wages between Western Sydney and Greater Sydney



34.6%

of net earnings required for a typical dual-income Western Sydney household to service a new mortgage

Average annual toll spend per non-business customer account by postcode in the 2020-21 financial year
(Source: NSW Treasury and Transport for NSW, Toll Review, 2023.)



The Government is delivering on its commitment to introduce a \$60 weekly toll cap, as part of New South Wales' largest-ever toll relief program.

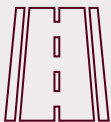
The two-year program will provide immediate relief through:

- a \$60 weekly toll cap for private motorists from 1 January 2024, assisting more than 700,000 motorists
- a 33 per cent reduction in the truck toll multiplier on the M5 East and M8.



The NSW Government has commissioned an Independent Review of Sydney’s motorway network, led by Professor Allan Fels AO and Dr David Cousins AM. This review is underway and will investigate reform options to reduce costs to motorists and simplify the toll road system.

Household budgets will continue to face pressure from increasing tolls unless the road network is enhanced without handing over assets to the private sector.



\$60

weekly toll cap for private motorists



700,000

private motorists state-wide will be assisted by the weekly toll cap



33%

reduction in the truck toll multiplier

Energy relief

The NSW Government is ensuring a secure supply of clean electricity for New South Wales with a long-term energy investment plan and immediate relief for families to manage the impact of rising energy prices.

The National Energy Bill Relief payment, introduced in July 2023 in partnership with the Australian Government, provides automatic payments of \$650 for more than 300,000 small businesses and \$500 for around 1.6 million eligible households towards their electricity bills over the coming year.

This Budget includes new funding to expand energy relief beyond 2023-24 to help families with crucial cost-of-living relief.

Energy bill relief will be extended from 1 July 2024 for families, seniors, and households struggling with the cost of living, with a major expansion of energy rebate schemes to help support households while long-term investment begins. This includes:

- increasing the Family Energy Rebate to **\$250**
- increasing the Low-Income Household Rebate and Medical Energy Rebate to **\$350**
- increasing the Seniors Energy Rebate to **\$250**
- increasing the value for each equipment type up to **\$1,639** for the Life Support Rebate.





Confronting the housing crisis

Housing affordability and availability is the single biggest pressure facing household budgets in New South Wales, with mortgage payments or rent the largest expense for most households.

People buying their first home will save up to \$30,735 through an expanded First Home Buyers Assistance Scheme. An estimated 77 per cent of first home buyers in Western Sydney purchase a home for under \$1 million and therefore benefit from the scheme.

First Home Buyers Assistance Scheme

A family purchases a home for \$790,000 – the estimated average price paid by a Western Sydney first home buyer. Thanks to the First Home Buyers Assistance Scheme, the family pays no stamp duty, saving \$30,285.



**\$2.2
billion**

Housing and
Infrastructure Plan
for New South Wales



\$30,735

maximum saving
through the expanded
First Home Buyers
Assistance Scheme



Addressing the chronic shortage of housing requires a long-term plan. The **\$38.7 million** Faster Planning Program, **\$224.0 million** Essential Housing Package and **\$2.2 billion** Housing and Infrastructure Plan will begin to address the historic neglect of new housing supply across New South Wales.

The NSW Government is also providing immediate support with the rental reform package.

The one-third of Western Sydney households who are renting have been given a voice through the appointment of a state-first NSW Rental Commissioner. The NSW Rental Commissioner will work with the Government to design and implement changes to make renting fairer, more affordable, and more secure.

The Government is also ensuring a fair deal for renters through the Portable Rental Bonds Scheme, protecting renters from unfair evictions by legislating reasonable grounds for ending a lease, and making it easier for renters to have pets in homes.

The Government has committed **\$24.0 million** to establish a NSW Building Commission to support high-quality housing and protect home buyers from sub-standard buildings. The Government will amend the planning process to focus state-owned housing corporations on tackling the State's housing crisis.

This will enable more social and affordable homes to be built faster, closer to jobs, and in places where people want to live.

The Government is establishing Homes NSW to deliver better outcomes for social housing tenants, deliver more affordable and social housing, and reduce homelessness in New South Wales.

The Government is supporting more housing supply by committing to set aside 30 per cent of surplus government land for social, affordable, and universal housing.

Caring for children

Investment in quality early childhood education and care has lifelong benefits for New South Wales' youngest learners and is key to enabling parental workforce participation.

The Budget maintains the **\$5.0 billion** investment over 10 years in the Childcare and Economic Opportunity Fund and also maintains the **\$5.7 billion** funding over 10 years for universal preschool access.

This Budget takes the first steps to deliver universal preschool access and ensure all families can benefit from early childhood education and care services.



This Budget includes an **\$849.0 million** investment in new early childhood education and care services, which will increase the number of available places and put downward pressure on prices. Initiatives include:

- fast tracking **\$769.3 million** for 100 new preschools on public school sites
- **\$60.0 million** towards new and upgraded non-government preschools
- up to **\$20.0 million** to support the growth of not-for-profit early childhood education and care services in high demand areas.

This will improve access to preschool for parents across New South Wales, including in Western Sydney, and will include new on-site public preschools at Melrose Park Public School and at the new public primary school at Nirimba Fields.

This Budget includes **\$1.6 billion** of preschool fee relief from an expanded affordable preschool program including:

- saving parents and carers \$500 a year by trialling preschool fee relief for 3-year-old children in long day care
- \$4,220 per year in fee relief for parents and carers of 3-to-5-year-olds in community and mobile preschools
- \$2,110 in fee relief for parents and carers of children aged 4 years and above attending preschool in long day care centres.

Combined, these fee-relief programs are expected to benefit around 64,000 children and their families in Western Sydney.

We have permanently funded a new, means-tested Active and Creative Kids Voucher to support families that need it most.

Rebuilding essential services



2

The Government is reprioritising its spending to provide the immediate support people need today while also investing in a long-term plan to rebuild essential services. This Budget includes a pipeline of upgrades and new builds for hospitals, schools, and transport to ensure Western Sydney residents have the access to the essential public services that they expect and deserve.

Improving health services

Everyone in New South Wales deserves world class healthcare. Data from the Bureau of Health Information shows that almost 53,000 patients presented to emergency departments across the Western Sydney Local Health District between April and June 2023. The data also reveals that these patients are facing long wait times in emergency departments, with just 42 per cent of patients starting their treatment on time.

To deliver better healthcare, we need to respect and reward nurses, paramedics, and healthcare workers in our hospitals and health facilities.

This Budget invests **\$419.1 million** for an additional 1,200 nurses. It also commits **\$572.3 million** over three years to enable 1,112 full-time equivalent nurses and midwives whose positions were funded temporarily to June 2024 to be made permanent. These commitments will improve the experience of nurses, midwives, and patients in the NSW health system.

The NSW Government is investing a landmark **\$3 billion** in the 2023-24 NSW Budget for new and upgraded hospitals across greater Western Sydney, one of the largest investments in Western Sydney health infrastructure in history. This will include 600 new hospital beds across Western Sydney.



1,200

new nurses
and midwives



\$3
billion

for new and
upgraded hospitals
in Western Sydney



1,112

full-time equivalent
nurses and midwives
funded on a temporary
basis to be made
permanent

This Budget includes an additional **\$400.0 million** for the expansion of the scope of the **\$700.0 million** Rouse Hill Hospital development – the first brand-new adult public hospital to be built in Western Sydney in more than 40 years.

We will expand Fairfield Hospital to deliver more beds, increase the capacity of emergency and critical care services, and expand other hospital and community health services through an investment of **\$550.0 million**.

The Nepean Hospital and Integrated Ambulatory Services (Stages 1 and 2) Upgrade will improve access to innovative, effective, and welcoming health services for people in Western Sydney and the Blue Mountains, through an investment of **\$339.4 million** over four years to 2026-27, as part of a broader **\$1.0 billion** project.

Canterbury Hospital will undergo its first major development since 1998, at a cost of **\$350.0 million**. We will also deliver additional beds at Blacktown and Mt Druitt Hospitals, through an investment of **\$120.0 million**.

The redeveloped Liverpool Health and Academic Precinct will become a hub for innovation and medical research in southwestern Sydney, through an investment of **\$343.0 million** over four years to 2026-27, as part of a broader **\$740.0 million** project. The increased hospital capacity will be critical for meeting the needs of the growing population in Liverpool and the surrounding communities.

We will deliver additional clinical services at Macarthur as part of the Campbelltown Hospital Redevelopment Stage 2: Mental Health and southwest Paediatric Service through an investment of **\$53.5 million** in 2023-24, as part of the broader **\$632.0 million** redevelopment.

The additional clinical services at the Macarthur site, which are currently coming online, will deliver enhanced paediatric and mental health capacity, improve pedestrian and vehicle access, and provide more local employment opportunities.





The Children's Hospital at Westmead Stage 2 Redevelopment will ensure that the hospital continues to be a world leader in providing paediatric services for children locally and across the State, through an investment of **\$454.4 million** over four years to 2026-27, as part of a **\$619.0 million** project.

The Integrated Mental Health Complex at Westmead will enable mental health services currently located at Cumberland Hospital West Campus to relocate to a new, purpose-built facility in the Westmead Health Precinct, connected to Westmead Hospital, through an investment of **\$409.0 million** over four years to 2026-27, as part of a **\$460.0 million** project.

We have allocated **\$25.0 million** to plan for the redevelopment of the Blue Mountains Hospital.

The New Bankstown Hospital will also support the growing population of the southwestern Sydney region, through an investment of **\$1.3 billion**.



600

new hospital
beds across
Western Sydney



**\$1.3
billion**

for the New
Bankstown Hospital



Better education and schools

The Government is addressing declining education outcomes exacerbated by teacher shortages. The 2023-24 Budget begins the long-term rebuilding of our education system.

We are investing in permanent literacy and numeracy tutoring programs in primary and secondary schools through a **\$278.4 million** state-wide investment, and providing 250 additional school counsellors across New South Wales to support students with mental health needs or disabilities, to improve wellbeing and reduce disruption in classrooms.

This Government is investing in secure jobs to increase retention rates and to help address the teacher shortage crisis.

We are converting 16,000 teachers and support staff across New South Wales schools from temporary to permanent positions. Since 2 May 2023, more than 3,000 teachers and support staff in Western Sydney public schools have accepted offers to transition to permanent employment.

We are investing **\$3.5 billion** in Western Sydney over the next four years to modernise existing school assets, build new schools, and provide the public preschools that our growing communities need. This significant investment includes:

- new primary schools including in the Carter Street precinct (near Sydney Olympic Park), Gables, Nirimba Fields, Tallawong, Westmead South, Gregory Hills, and Melonba
- new high schools including in Melrose Park, Schofields-Tallawong, Jordan Springs, Leppington, Gledswood Hills/ Gregory Hills, Melonba, Edmondson Park, and Wentworth Point

- upgrades to primary schools across Western Sydney including Cambridge Gardens Public School, Greenway Park Public School, Dalmeny Public School, Darcy Road Public School, Dundas Public School, Kingswood Public School, Leppington Public School, Melrose Park Public School, Northmead Public School, Parramatta East Public School, Punchbowl Public School, Schofields Public School, and Telopea Public School
- upgrades to high schools across Western Sydney including Birrong Boys High School and Birrong Girls High School, Cecil Hills High School, Cumberland High School, Condell Park High School, Eagle Vale High School, Katoomba High School, Northmead Creative and Performing Arts High School, Rouse Hill High School, Sir Joseph Banks High School, and The Ponds High School.

A plan is being developed to deliver additional new and upgraded schools in fast-growing areas, backed by an audit of enrolment growth across New South Wales.

The Budget also includes an investment of **\$11.9 million** in 2023-24 for the new Institute of Applied Technology for Construction at the TAFE NSW Nepean-Kingswood campus, which will provide specialised training in fields like construction, carpentry, electrical, and plumbing.

We are addressing the teacher shortage crisis in our public schools by recruiting and retaining high-quality teachers through a historic pay rise and moving more executives back into the classroom.

The four-year pay agreement is a nation-leading investment in our 95,000 teachers across the state. It will ensure our children are taught by teachers who know that their contribution is valued.





Delivering the Essential Transport Infrastructure Plan without privatising public assets

The Government is rebuilding our essential services and better connecting our communities.

Responsible infrastructure investment means that we are rebuilding essential services while delivering the largest set of gross debt reduction measures in the State's history that didn't rely on privatisation.

Improved transport infrastructure will make Western Sydney a better place to live, work, and visit by connecting people and communities and making journeys safer, easier, and more reliable.

An integrated transport network including road, train, metro, bus, ferry, light rail, cycling, and walking will play a critical role in driving economic growth and wellbeing across Western Sydney and New South Wales.

We have commissioned a Sydney Metro Review, including into Metro West. This will evaluate the delivery of Sydney Metro to date and make recommendations on getting the maximum value out of the project, and to support better integration with the wider transport network.

We are investing an additional **\$1.0 billion** in Sydney Metro City and Southwest to get this project back on track after project delays and cost blowouts left the project unable to be completed. We will invest an additional **\$300.0 million** to upgrade train stations across the transport network, making them more accessible through the installation of new lifts, ramps and footbridges.

We will procure seven new Australian-made ferries, replacing seven RiverCat vessels that have been in service for 25-30 years, through an investment of **\$43.0 million**. Manufacturing of the first two vessels has commenced, with the first vessel expected to enter sea trials in early 2024 before going into service.

We are doubling a state-wide investment in Active Transport Infrastructure with an additional **\$60.0 million**. This will enable local councils to deliver projects that expand cycleway networks and increase opportunities for walking, including in greenfield developments in Western Sydney.

Western Sydney International Airport

The NSW Government is committed to the successful opening of the Western Sydney International Airport in 2026. In collaboration with the Australian Government, the NSW Government is focused on delivering essential roads, critical utilities, and transport connections (such as the Sydney Metro – Western Sydney Airport and Western Sydney Rapid Bus Network) to establish the airport as Western Sydney’s international gateway and an important economic powerhouse for the State.

This focus is critical to delivering the benefits that the airport will bring to Western Sydney, New South Wales, and Australia:

- the Sydney Metro – Western Sydney Airport (**\$7.9 billion** including Australian Government contribution) will deliver six new Metro stations to service the new airport, interchanging with the T1 Western Line at St Marys

- funding has been reserved for the Western Sydney Rapid Bus Network, which will connect Penrith, Liverpool, and Campbelltown to the new airport
- the M12 Motorway (**\$1.1 billion**), funded by the NSW and Australian Government, will deliver a new motorway to provide direct access to the airport. The M12 Motorway will run east to west, linking the M7 Motorway, The Northern Road, and Elizabeth Drive, and will improve the movement of freight in and through Western Sydney
- the Advanced Manufacturing Research Facility as an accelerator of advanced industry.

Parramatta Light Rail Stages 1 and 2

The Government is committed to completing construction of the Parramatta Light Rail Stage 1 (**\$374.1 million**) from Westmead to Carlingford via the Parramatta CBD and Camellia with a 12-kilometre two-way track. This will support growth in Western Sydney, connecting new communities and places.

By 2026 around 28,000 people are expected to use the Light Rail per day, with an estimated 130,000 people living within walking distance of the 16 light rail stops.

The NSW Government has reserved an additional **\$200.0 million** to expedite the planning for the procurement, construction, and delivery of Parramatta Light Rail Stage 2 for Western Sydney.



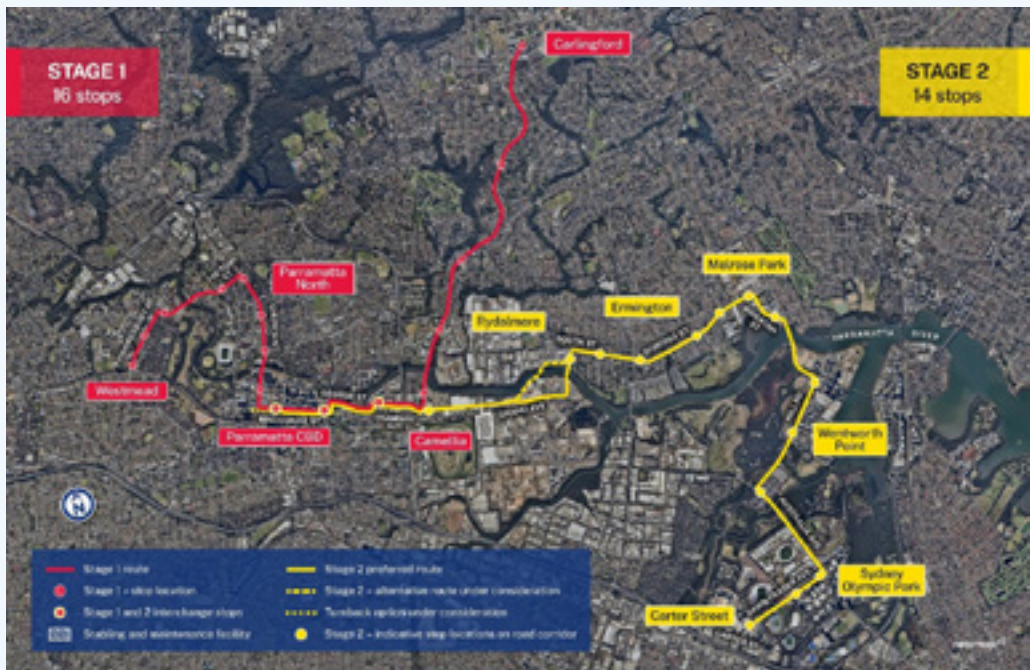
28,000

people expected to use the Light Rail Stage 1 per day



130,000

people living within walking distance of the Light Rail Stage 1 stops



Parramatta Light Rail proposed route



Improving our roads

The Government is investing **\$2.4 billion** in Western Sydney as part of the Connecting Sydney Roads program to accommodate population and employment growth, with **\$429.8 million** of this expenditure in 2023-24.

Key projects include:

- **\$54.0 million** in 2023-24 for Mulgoa Road upgrades (NSW and Australian Government funded)
- **\$2.8 million** in 2023-24 for The Horsley Drive, M7 motorway to Cowpasture Road (NSW and Australian Government funded)
- **\$3.4 million** in 2023-24 for Appin Road Improvements (Australian Government funded)
- **\$41.4 million** in 2023-24 for Spring Farm Parkway Stage 1
- **\$7.6 million** in 2023-24 for Mamre Road, M4 Motorway to Erskine Park Road
- **\$68.0 million** in 2023-24 for Prospect Highway, Reservoir Road to St Martins Crescent
- **\$29.8 million** in 2023-24 for Memorial Avenue, Old Windsor Road to Windsor Road
- **\$142.9 million** in 2023-24 for Western Sydney Long Term Strategic Transport Corridor Preservation.

We will also upgrade the intersection of Homebush Bay Drive, Australia Avenue, and Underwood Road to ease congestion, increase safety, and improve travel times to Homebush and Sydney Olympic Park. The project is funded by the NSW and Australian Government with an investment of **\$92.8 million**.

We have also committed **\$201.4 million** for upgrades to Richmond Road and Garfield Road East.

Supporting communities



The Government will provide a range of support for multicultural communities.

The Multicultural Communities Support Package, a **\$47.8 million** investment, includes:

- establishing the Premier's Prevention Panel on Racism and Extremism, with representatives from culturally and linguistically diverse communities, faith communities, and NSW Government agencies, to develop a whole-of-government response to the growing safety concerns of these communities in New South Wales
- a new **\$30.0 million** Multicultural Capital Partnership Fund to deliver community infrastructure projects, partnering with multicultural organisations
- creating a Multicultural Youth Network platform to advise agencies on matters affecting young people from culturally and linguistically diverse backgrounds
- a **\$17.8 million** investment in community languages schools to make learning a language more affordable and accessible.

The Government is providing additional funding to keep places of worship safe. A commitment of **\$15.0 million** for faith organisations will improve safety and security at religious institutions including places of worship, schools, community centres, and buildings.

This Budget also includes funding for 20 additional police officers for Western Sydney, to keep our community safe.

This Budget commits **\$4.4 million** over three years to establish a new specialist multicultural domestic and family violence centre in southwest Sydney. The centre will provide a holistic and culturally appropriate response to domestic and family violence.



\$47.8 million

for the state-wide
Multicultural
Communities
Support Package



\$15.0 million

to keep places of
worship safe across
New South Wales



\$4.4 million

for a new specialist
multicultural domestic
and family
violence centre in
southwest Sydney

Empowering Aboriginal and Torres Strait Islander people and Closing the Gap



4

We acknowledge the Traditional Custodians of the land now called Western Sydney, including the Darkinjung, Dharawal, Dharug and Gundungurra peoples. We acknowledge the many Aboriginal and Torres Strait Islander people from around Australia who now call Western Sydney home.

Western Sydney is home to Australia's largest Aboriginal and Torres Strait Islander urban population, with 54,498 people or 2.1 per cent of the total population identifying as Aboriginal and Torres Strait Islander in 2021. Penrith, The Hills, and Wollondilly local government areas have the highest proportions of Aboriginal and Torres Strait Islander residents.

The NSW Government is committed to supporting Western Sydney's growing community of Aboriginal and Torres Strait Islander people, and to genuine reconciliation. We have allocated **\$5.0 million** to undertake a 12-month consultation process with Aboriginal and Torres Strait Islander communities, including in Western Sydney, to inform a Treaty process in New South Wales.

We are progressing the 28 co-developed Closing the Gap initiatives, developed in partnership with the NSW Coalition of Aboriginal Peak Organisations, and delivered with local communities across the state at a cost of **\$131.4 million**.

We are reaffirming our commitment to delivering the recommendations of the Upper House Committee on the Stolen Generations Survivors as set out in the Unfinished Business report with a further **\$3.4 million**.

We are continuing to support housing options for Aboriginal and Torres Strait Islander people, including those living in Western Sydney, through the delivery and maintenance of social and affordable housing through the Aboriginal Housing Office.



54,498

Western Sydney residents identify as Aboriginal and Torres Strait Islander



28

co-developed Closing the Gap initiatives for New South Wales



\$5.0 million

to undertake consultation to inform a Treaty process in New South Wales

Celebrating
culture



5

The Government is investing in the cultural life of Western Sydney, and supporting the diverse communities that make Western Sydney unique.

We will deliver the new Powerhouse Museum in Parramatta, which will become Western Sydney's flagship cultural institution, through an investment of **\$464.5 million** over two years to 2024-25.

We have committed **\$2.5 million** over two years for improvements to Caloola Reserve, providing additional open space for the local community.

The Australian Sikh Association will receive **\$2.8 million** to support the Sikh community to upgrade the facilities of the Glenwood Gurdwara.

The Government has committed **\$17.7 million** to reopen the Canterbury Ice Rink to the public, including rebuilding the ice rink's roof, and upgrading amenities.

We will conduct a feasibility study to inform the opening of the Prospect Reservoir to provide access to open, safe, and affordable water-based recreation in Western Sydney through a **\$4.3 million** investment.

Celebrating women in sport

We will name a stand at Stadium Australia (Accor Stadium) after a female sporting icon, following Sydney leading the largest FIFA Women's World Cup™ on record in 2023. Five of the matches including the World Cup final were played at Stadium Australia (Accor Stadium).

The NSW Government will commission a giant mural at Stadium Australia (Accor Stadium) to celebrate the Matildas' historic success at the World Cup. The legacy funding delivered by the Office of Sport reflects the success and momentum of this significant global event for Sydney and New South Wales.

The NSW Football Legacy Fund ensures the benefits of New South Wales hosting the Women's World Cup will continue. This Fund aims to improve football facilities and support infrastructure, increase participation opportunities, and improve female player pathways.



\$464.5 million

to deliver the new Powerhouse Museum in Parramatta



\$17.7 million

to reopen the Canterbury Ice Rink

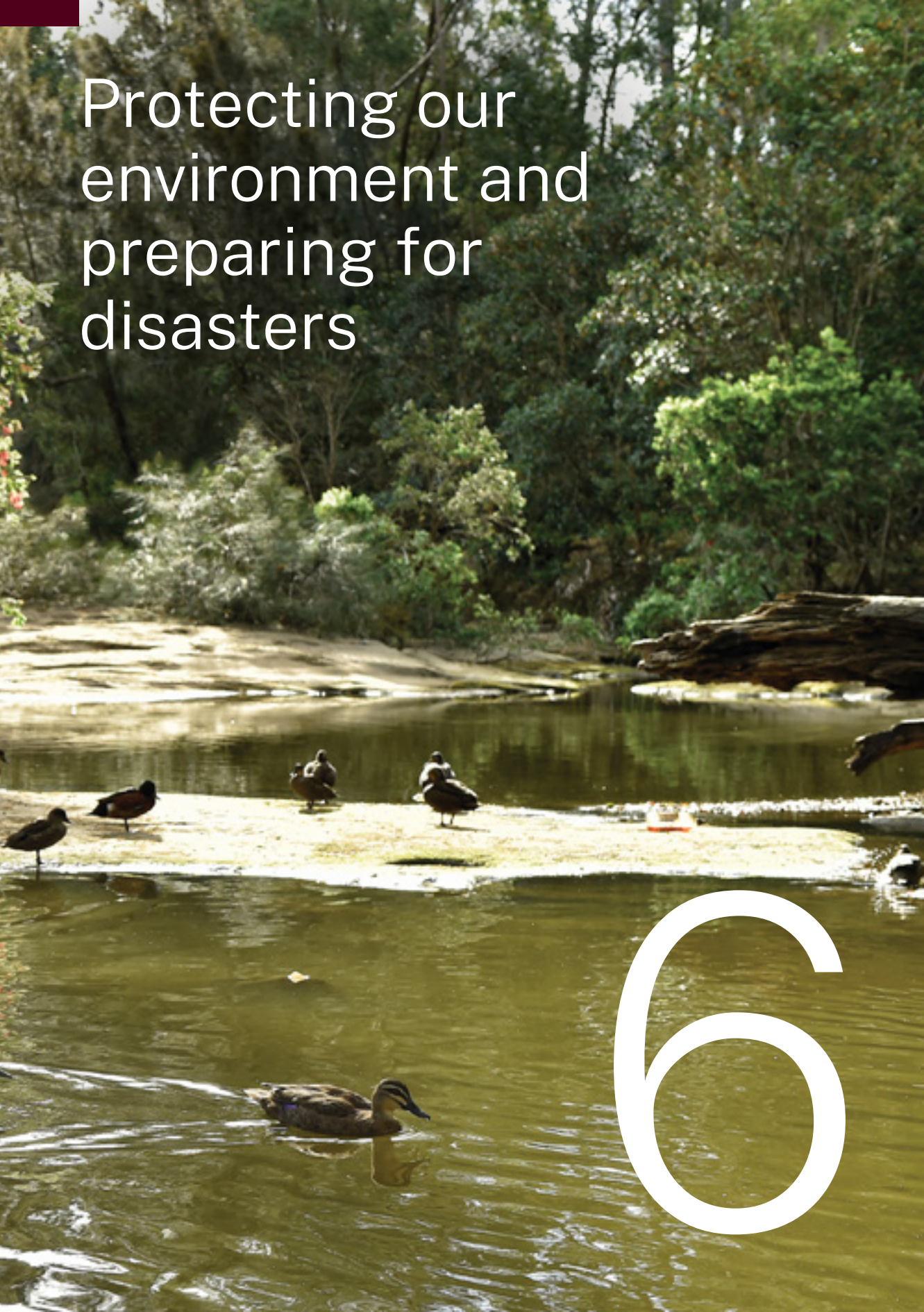


\$2.8 million

to support the Sikh community to upgrade the facilities of the Glenwood Gurdwara

Protecting our
environment and
preparing for
disasters

6



The Government is protecting the natural environment and supporting Western Sydney communities to be more resilient through improved disaster preparedness.

This Budget invests in new and upgraded facilities and technology in emergency services, with **\$11.5 million** for Fire and Rescue NSW infrastructure to improve community safety and emergency services in Western Sydney. This includes investments in new stations at Busby and Wentworthville, with planning continuing for a new station at Marsden Park.

We will improve critical communications infrastructure through the Western Sydney Floods Resilience Plan, delivering four mobile cells on wheels to increase the resilience of critical communications infrastructure during natural disasters through an investment of **\$11.3 million**.

We are delivering the Cumberland Plain Conservation Plan to protect biodiversity in Western Sydney, with an additional **\$103.6 million** over two years to 2024-25.

We are protecting koalas and their habitat, improving the care of koalas, and ensuring koalas continue to live in southwest Sydney, through an **\$80.6 million** investment, including the following measures:

- the Georges River National Park will receive **\$48.2 million** to protect one of the largest koala populations in metropolitan Sydney
- three koala-friendly crossings will be delivered at a cost of **\$26.7 million** to improve the connectivity of koala habitat along Appin Road and ensure the sustainability of koalas in southwestern Sydney
- a Koala Care Centre in the Macarthur region will receive **\$5.7 million** to support koala rescue, rehabilitation, and conservation in the Georges River area.



\$103.6 million

added to deliver the Cumberland Plain Conservation Plan



\$80.6 million

to protect koalas and their habitat in southwest Sydney



\$11.5 million

for Fire and Rescue NSW infrastructure in Western Sydney

Industry, business and job support



7

The Government recognises the vibrancy of the Western Sydney business community, including the 103,529 employing small businesses, and the economic potential of the region.

Through the Government’s Small Business Package, we will permanently make outdoor dining a permissible activity across all NSW council areas, including in Western Sydney. Businesses will be able to submit a shorter development application to their local councils, saving time, and money.

We are committed to modernising laws to respond to the gig economy, including a workers compensation scheme and a portable entitlements scheme for gig, disability, home care, and other precarious workers.

In addition, the NSW Business Bureau and Small Business Charter will assist small businesses to manage their needs, including help to navigate regulations and processes, seeking support through government grants and initiatives, and to grow their small business.

This Budget will support grassroots arts and culture, with Western Sydney businesses, the creative industries, and the night-time economy set to benefit.

One of the first decisions of the incoming Government was to allocate **\$1.5 million** to Culture Up Late in Western Sydney to drive visitation to Western Sydney CBDs. In this Budget we are investing **\$26.8 million** in 2023-24 to support the Office of the 24-Hour Economy Commissioner, whose work includes funding precincts in Parramatta, Lakemba, and Blacktown.

We are also allocating **\$31.2 million** in 2023-24 for contemporary music, including developing a Music Scene Plan, establishing Sound NSW, and a venue support plan. This work will support Western Sydney businesses and the pipeline for creative talent and workers.



103,529

employing small businesses in Western Sydney



31.4%

of New South Wales’ workforce lives in Western Sydney



\$26.8 million

to support the Office of the 24-Hour Economy Commissioner

Image credits:

NSW Department of Planning and Environment / Salty Dingo / Adam Hollingworth / Sarah Rhodes, Destination NSW / Jem Cresswell / Anna Kucera / Daniel Boud, Western Parklands Council, NSW Health, NSW Department of Premier and Cabinet / Karl Schwerdtfeger, Adobe Stock

NSW Treasury

First published September 2023

NSW Budget 2023-24 publications include:

Budget Paper No.01 Budget Statement

Budget Paper No.02 Agency Financial Statements

Budget Paper No.03 Infrastructure Statement

Budget Paper No.04 Appropriation Bills

Gender Equality Budget Statement

Overview: Our plan for NSW

Our plan for Regional NSW

Our plan for Western Sydney

This publication is protected by copyright. With the exception of (a) any coat of arms, logo, trade mark or other branding; (b) any third party intellectual property; and (c) personal information such as photographs of people, this publication is licensed under the Creative Commons Attribution 3.0 Australia Licence.

The licence terms are available at the Creative Commons website at:
creativecommons.org/licenses/by/3.0/au/legalcode

NSW Treasury requires that it be attributed as creator of the licensed material in the following manner: © State of New South Wales (NSW Treasury), (2023).

Cover image credit: Department of Customer Service

52 Martin Place
Sydney NSW 2000

budget.nsw.gov.au
treasury.nsw.gov.au

GPO Box 5469
Sydney NSW 2001

