

2. NEW INFRASTRUCTURE PROGRAM TO SUPPORT ESSENTIAL SERVICES, HOUSING AND COMMUNITIES

This NSW Government continues to invest in infrastructure to improve services across housing, health, transport and education and other portfolios. The focus of this Budget is to maintain delivery of this essential infrastructure while facing financial risks due to rising construction costs, supply chain disruptions and inflation impacts.

Highlights of the Government's current infrastructure pipeline include:

- \$55.6 billion for public transport and infrastructure
- \$12.4 billion for health infrastructure
- \$11.0 billion for schools and skills infrastructure
- \$7.1 billion to build stronger communities, including \$4.1 billion for social housing
- \$4.2 billion for the climate change, energy, the environment and water infrastructure portfolio.

2.1 Climate Change, Energy, the Environment and Water



The Department of Climate Change, Energy, the Environment and Water is dedicated to tackling climate change, leading the energy transition, protecting the environment, caring for heritage and managing one of our most precious natural assets, water.

\$4.2
billion

Capital
Expenditure
to 2028-29

\$1.7 billion

Capital
Expenditure
2025-26

It leads the way on climate change, driving the sustainable transition to a net zero economy, powered by affordable, reliable, and clean energy.

The portfolio works to conserve and protect the state's natural environment. It manages the NSW National Park Estate, including its rich and diverse biodiversity and First Nations cultural heritage for future generations.

It progresses the sustainable management of water resources across the state, to support the environment, communities and industry which is also an integral part of the portfolio.

This Budget includes capital investment of \$4.2 billion in Climate Change, Energy, the Environment, Heritage and Water Portfolios over the four years to 2028-29. Sydney Water Corporation, Hunter Water Corporation, and Water NSW are also planning to support new housing and ageing assets, pending upcoming Independent Pricing and Regulatory Tribunal (IPART) price determination. Additional information can be found in the public financial corporations' project listings in Chapter 5 of this Budget Paper.

Box 2.1: Transforming NSW's energy system

Renewable Energy Zones (REZs) underpin New South Wales's move to clean, reliable and affordable energy as coal-fired power stations retire. Five zones have been identified which include Central West Orana, New England, South West, Hunter Central Coast and Illawarra.

In April 2025, the Energy Corporation of NSW (EnergyCo) appointed ACEREZ – a consortium of ACCIONA, COBRA and Endeavour Energy, to design, build and finance the Central-West Orana REZ transmission project. This landmark project will deliver at least 4.5 gigawatts of new network capacity from 2028, with 7.15 gigawatts of wind, solar and battery projects awarded Access Rights, which is enough to power more than 2.7 million homes each year. Early works on the project started in February 2025, and construction is scheduled to start mid-2025.

To support the construction and delivery of REZs, the NSW Government is investing \$115.5 million in supporting infrastructure, such as the construction of a Logistics Precinct at the Port of Newcastle. This port will act as a key import site for the processing and storing of large renewable energy components before they are transported to renewable development project sites.

The Energy Security Corporation (ESC), seeded with \$1.0 billion, is a government-backed clean energy investor in large-scale storage and enabling infrastructure. The ESC co-invests with private investors to accelerate New South Wales's energy transformation. Key areas of investment include utility scale storage, system security and network infrastructure and consumer energy resources and end-use equipment including virtual power plants and community batteries.

Table 2.1: *Key new Climate Change, Energy, the Environment and Water projects commencing in 2025-26 included in this Budget*

Project	Estimated total cost	Expenditure over four years to 2028-29
Central West Orana REZ Delivery and Construction Phase		
The Central-West Orana REZ has moved into the delivery phase. While the network operator, ACERREZ, is constructing the renewable energy network infrastructure, EnergyCo has a budget allocation to finalise land acquisitions and the biodiversity offsets required under the planning approvals as well as overseeing the delivery by ACERREZ.	\$772.1 million	\$498.5 million
Newcastle Port Logistics Precinct		
Acquisition and construction of a port logistics precinct at the Port of Newcastle to enable temporary storage of Oversize Over Mass components to ensure the safe and steady transportation of these large components to Central-West Orana, New England and Hunter-Central Coast REZs.	\$115.5 million	\$115.5 million
Enabling Frontline Conservation		
Construction of additional feral predator free areas in Mutawintji and Yathong. and a new replacement helicopter for statutory firefighting.	\$15.1 million	\$15.1 million
Biodiversity Offset Scheme ICT systems		
Development of digital biodiversity offset obligation and authority registers and upgrades to existing systems to maintain security and validity of information.	\$14.6 million	\$14.6 million

Table 2.2: Key Climate Change, Energy, the Environment and Water projects continuing in this Budget

Project	Estimated total cost	Expenditure over four years to 2028-29
Transmission Acceleration Facility		
The Facility will help fast-track critical energy infrastructure to deliver lower cost and more reliable energy for all New South Wales consumers including:		
<ul style="list-style-type: none"> Central-West Orana Renewable Energy Zone New England Renewable Energy Zone Hunter and Central Coast Renewable Energy Zone, and Hunter Transmission Project. 	\$4.3 billion	\$2.1 billion
The Transmission Acceleration Facility is a \$2.4 billion recycling funding facility where development funding is provided for projects and early community and employment benefits from the Facility and is recovered from private network operators thereby replenishing the Facility to support further projects until final repayment in 2040.		
Sustainable Diversion Limit Adjustment Mechanism (SDLAM)		
An Australian Government funded program improving river flow management, replacing ageing infrastructure and supporting native fish populations in the Murrumbidgee and Murray regions.	\$299.0 million	\$248.5 million
National Parks Strategic Fire Trail Network Upgrades		
Upgrade of strategic fire trails in national parks, to support the effective management of bushfires to prevent loss of life, property, and biodiversity.	\$177.3 million	\$65.0 million
Improving Access to National Parks		
Improving access to the natural beauty of New South Wales national parks and supporting local tourism by upgrading and extending walking trails and improving visitor infrastructure and facilities.	\$149.6 million	\$3.1 million
Port to Project – Road Upgrades		
Infrastructure upgrades of regional roads and the Newcastle Port to enable the safe and timely transport of large renewable energy equipment components. This equipment will support REZ projects and other NSW Electricity Infrastructure Roadmap and Australian Government energy projects in regional New South Wales.	\$128.5 million	\$91.4 million
Reserve Establishment and Activation		
Continuing investment of a fund to support the establishment and activation of reserves, fill critical gaps in the national parks estate and enhance regional tourism and economic benefits.	\$120.0 million	\$4.0 million
Great Walks: Multi-day Walking Experiences		
Creating multi-day walking trails: the Gardens of Stone Walk and the Great Southern Walk and Illawarra Mountain Biking Network.	\$80.4 million	\$53.6 million
Reconnecting River Country, Murrumbidgee River Constraints Measure		
An Australian Government funded program aims to secure up to 40 per cent of the flow corridor in the Murrumbidgee by December 2026, facilitating flows up to the maximum rate permitted under the Water Sharing Plan, with a total expenditure including operational expenditure of \$255.6 million.	\$75.8 million	\$68.2 million

Project	Estimated total cost	Expenditure over four years to 2028-29
National Parks Visitor Infrastructure Management		
Investing in National Parks visitor facilities, so they are safe, accessible, and open, and ensuring increasing visitor demand can be managed sustainably.	\$73.3 million	\$39.9 million
Dorrigo Escarpment Walk and the Arc Rainforest		
Creating a four-day, three-night walk through World Heritage rainforest and towering eucalypts that will feature dramatic escarpments and scenic waterfalls. Working in partnership with local First Nations groups, capital works include a new visitor centre, elevated treetop walkway and visitor accommodation.	\$56.4 million	\$50.6 million
Koala Strategy		
The NSW Koala Strategy will help secure koalas in the wild by protecting, restoring and improving the condition of koala habitat, supporting local communities to conserve koalas, improving koala safety and health, and building knowledge to improve koala conservation.	\$52.7 million	\$2.6 million
Georges River Koala National Park		
The establishment of a new Georges River Koala National Park to protect one of the largest koala populations in metropolitan Sydney. The project includes construction of visitor infrastructure such as walking and cycling paths, amenity blocks and carparks to support recreational activities.	\$47.9 million	\$29.7 million
Northern NSW Fish Passage		
Removing river constraints to boost native fish populations in northern New South Wales, funded through the Northern Basin Toolkit program.	\$53.5 million	\$35.6 million
National Parks and Wildlife Service's Infrastructure Betterment Fund Projects		
National Parks and Wildlife Service's Infrastructure Betterment Fund projects support the rebuilding of infrastructure in a way that reduces vulnerability to future disasters, provides continuity of essential services and lowers the risk of economic impact due to a natural disaster.	\$41.9 million	\$27.6 million
Nyngan to Cobar pump station replacement		
Replacing pump stations along the Nyngan to Cobar pipeline, supporting communities and industries in central New South Wales.	\$47.2 million	\$30.8 million
Me-Mel (Goat Island) Remediation		
Remedial works to clean up and repair the Me-Mel Island in Sydney Harbour ahead of transferring ownership back to traditional owners. Works will include the repair of seawalls and buildings, improved wharf access, upgraded services and the removal of contaminants such as asbestos and lead.	\$36.7 million	\$28.4 million
Great Koala National Park		
The capital component of an \$80.0 million investment to create the Great Koala National Park to preserve large tracts of koala habitat on the Mid-North Coast of New South Wales.	\$28.5 million	\$27.9 million
Wilcannia Water Security		
Upgrading water security in Central Darling Shire, as well as delivering job training and enhancing cultural connection through the development of a Community River Place.	\$38.5 million	\$24.8 million

Project	Estimated total cost	Expenditure over four years to 2028-29
National Parks Radio Network – Migration to the Public Safety Network		
Enabling the successful migration of the National Parks and Wildlife Service's radio network onto the NSW Public Safety Network. The Public Safety Network consolidates standalone radio networks of over 70 NSW Government agencies onto one network, as part of the NSW Government's response to the NSW Bushfire Inquiry.	\$22.2 million	\$10.3 million
Air Quality and Environmental Monitoring Program		
Critical works to expand and maintain the New South Wales air quality monitoring network, and to support essential computing infrastructure enabling real time air quality alerts and forecasting for government, communities, and individuals.	\$21.5 million	\$10.3 million
Digital Upgrade to the Biodiversity Offset Scheme		
A digital architecture upgrade and re-design to enable digital infrastructure to meet the demand of the Biodiversity Offset Scheme.	\$18.2 million	\$9.6 million
Wolli Creek Regional Park		
Incorporation of additional land within Wolli Creek Regional Park to protect the diverse ecosystem and threatened species within the park. The park provides valuable open space in the urban environment of inner South-West Sydney.	\$8.8 million	\$4.0 million
Protect Koalas of Southern Sydney		
The creation transfer of wildlife corridors in Woronora Heights Southern Sydney to support critical koala habitat and the movement of wildlife.	\$6.2 million	\$2.3 million
Biodiversity land acquisition		
Acquisition of land to conserve biodiversity outcomes.	n.a.	n.a.
Lord Howe Island – Marine Infrastructure		
Providing for the continuation of a marine freight service that meets biosecurity standards for a World Heritage listed site and meets essential community needs.	n.a.	n.a.
Lord Howe Island – Waste Management Facility Upgrade		
Upgrade to the existing Waste Management Facility on Lord Howe Island to ensure enduring compliance with legislative and regulatory requirements.	n.a.	n.a.

Pages 4-7 to 4-10 of Chapter 4 of this *Infrastructure Statement* list the major capital projects and minor works for the Climate Change, Energy, the Environment and Water agencies, including the ETC, estimated expenditure to 30 June 2025, and 2025-26 allocation.

2.2 Communities and Justice



Communities and Justice agencies provide community services that contribute to a safe, just, inclusive and resilient New South Wales. This includes, operating an effective legal system, increasing access to social and affordable housing, protecting children and families, addressing domestic violence, reducing reoffending, and promoting community harmony and social cohesion.

\$7.1
billion

Capital
Expenditure
to 2028-29

\$2.0
billion

Capital
Expenditure
2025-26

The infrastructure program will support these agencies to promote public safety, reduce reoffending, support community harmony and social cohesion.

This Budget includes capital investment of \$7.1 billion in Communities and Justice over the four years to 2028-29.

Box 2.2: Replacement of Class 1 Vessel

The Government is investing \$46.3 million to replace the NSW Police Force’s Class 1 ocean patrol vessel “Nemesis”.

Nemesis is the largest vessel in the NSW Police Force’s fleet and is critical for conducting extended offshore operations for both search and rescue, and marine crime activities. It also supports extended covert and overt operations along the entire New South Wales coastline. Nemesis plays a crucial role in protecting New South Wales strategic trade ports and economic interests, assists maritime counter-terrorism operations, polices major aquatic events, and is the response vessel to Lord Howe Island for emergency management.

Since 2008, Nemesis has been involved in seizing over 8.1 tonnes of border-controlled drugs, worth billions of dollars, not hitting the streets of Australia. In January 2024, Nemesis was the lead asset coordinating the interdiction of 120 tonnes of illegal tobacco, 115 nautical miles offshore. In May 2025, 1.1 tonne of cocaine was seized off the northern New South Wales coastline.

Currently cocaine shipments are being intercepted at the nation’s borders at unprecedented levels as Australia confronts a global surge in drug trafficking. Replacing the ageing Nemesis will significantly enhance the Police’s ability to effectively respond to this emerging trend.

The replacement vessel will be purpose built incorporating the latest technology in engine and hull design to increase efficiency, fuel savings and reduce carbon emissions. Equipped with the latest in satellite communications, navigation electronics and surveillance technology, the new vessel will be the leading marine law enforcement asset in the southern hemisphere and will directly contribute to the safety and protection of the NSW public.

Box 2.3: Critical upgrades to the NSW Police Force's ICT infrastructure

This Budget provides funding for three critical ICT programs for NSW Police Force (NSWPF) with an estimated total capital cost of \$116.7 million. This investment reinforces the Government's commitment to a safer, more connected New South Wales. The programs will support the sustainability of core network infrastructure, strengthen cyber security, and upgrade SAP enterprise resource planning systems. These initiatives are aligned with the State's digital transformation priorities and will ensure NSWPF is equipped with the sustainable infrastructure required to meet the evolving demands of modern policing while delivering better outcomes for the community.

The network upgrade includes updated telephony, collaboration, and audio-visual infrastructure. It will also maintain and improve contact centre technology for critical services like triple zero, the Police Assistance Line, and Crime Stoppers. Digital connectivity will be expanded with Wi-Fi at all sites, faster internet, cloud access, and improved reliability.

Cyber security and enterprise systems are also being strengthened to protect sensitive data and streamline police operations. Enhanced cyber defences will safeguard against emerging threats, while the upgrade of the SAP platform will improve efficiency, support changing workforce demands and service delivery.

This investment ensures the long-term resilience of NSWPF's ICT infrastructure. Upgrades to legacy systems and the adoption of modern technologies will enhance operational reliability, support evolving demands for officer connectivity and enable seamless communication across the state. These improvements will help NSWPF maintain public trust, support frontline officers, and ensure the safety and wellbeing of communities across the State.

Table 2.3: *Key new Communities and Justice projects commencing in 2025-26 included in this Budget*

Project	Estimated total cost	Expenditure over four years to 2028-29
NSW Justice Program Stage 1 – Sydney CBD Courts and Vulnerable Persons Hub		
Establish a Vulnerable Persons Service Hub in the Sydney Central Business District with new digital infrastructure to support remote hearings and therapeutic spaces for witnesses, victims and children. Reconfiguration of the Downing Centre and John Maddison Tower to add ten new virtually-enabled court suites for centralised bail hearings and five new small court rooms.	\$83.9 million	\$83.9 million
Critical Network Program		
The program will deliver critical upgrades to NSW Police Force ICT infrastructure to support and enhance modern digital policing capabilities.	\$60.0 million	\$50.0 million
Intensive Therapeutic Care Asset Strategy		
Investment in Government owned residential out-of-home care housing. These will be purpose built to deliver safe and stable housing for children over 12 years of age with complex needs who are either unable to be supported in foster care or require specialised and intensive supports.	\$49.2 million	\$49.2 million
Replacement of Class 1 Vessel		
Replacing the Class 1 Ocean Patrol Vessel, the Nemesis, will ensure the NSW Police Force can continue to conduct extended offshore operations. The vessel will keep the people of New South Wales safe by enforcing the law, countering terrorism, and conducting search and rescue operations along the entire New South Wales coastline.	\$46.3 million	\$46.3 million
SAP Upgrade		
The upgrade will replace the NSW Police Force's end of life Enterprise Resource Planning, Human Capital Management, and Workforce Rostering systems to modern, cloud-based solutions.	\$41.1 million	\$41.1 million
Cyber Security Enhancement Program Phase 2		
Enhancing NSW Police Force cyber threat detection and response capability, ensuring the protection of assets and maintaining the integrity of policing operations.	\$15.6 million	\$13.6 million
Class 3 Appliance Update for Safe, Reliable and Sustainable Response		
Expanding the Fire and Rescue NSW Class 3 Appliance Renewal program, delivering an additional 10 firefighting vehicles over the next two years. The program accelerates the replacement of ageing pumpers to maintain a target service life of 15 years, thereby helping to keep emergency response vehicles fit-for-purpose.	\$11.5 million	\$11.5 million
Police facility improvements at Balmain, Newcastle and Waverley		
Replacing the cladding at Balmain Marine Area Command, repairing the façade at Newcastle Police Station, and replacing the windows at Waverley Police Station to ensure the safety of the community, and NSW Police Force staff and assets.	\$8.8 million	\$7.5 million

Project	Estimated total cost	Expenditure over four years to 2028-29
Goonellabah New Fire Station		
The new station will accommodate the retained firefighters from Goonellabah Fire Station as well as the permanent firefighters from the Lismore Fire Station. The redevelopment will ensure essential emergency services are strategically located outside the major flood zone, enabling an efficient and rapid response during flood events.	\$7.0 million	\$6.0 million
Specialist Police Investigation Equipment		
Purchasing critical communications and analysis equipment which will assist in specialist investigations to disrupt crime and keep citizens of New South Wales safe.	\$6.0 million	\$6.0 million
Class 1 Appliance Program		
The strategy will deliver eight Class 1 vehicles for Fire and Rescue NSW to enhance operational flexibility and support regional response capacity.	\$5.5 million	\$5.5 million
Bondi Police Station Refurbishment		
Refurbishing Bondi Police Station to ensure facilities are fit for purpose and equipped to meet the evolving needs of the NSW Police Force.	\$1.6 million	\$1.6 million

Table 2.4: Key Communities and Justice projects continuing in this Budget

Project	Estimated total cost	Expenditure over four years to 2028-29
New Social Housing		
In addition to the \$4.0 billion social housing boost program announced in the 2024-25 Budget, the NSW Government has allocated \$1.0 billion per annum between 2028-29 and 2033-34 to deliver additional social housing. This includes \$358.9 million allocated to the Aboriginal Housing Office. A future business plan will inform options for how this investment will be delivered. This approach recognises that construction methods and geographic demand may evolve between now and 2028-29 and it is prudent to determine individual projects closer to those years.	\$10.0 billion	\$4.1 billion
Land and Housing Corporation (LAHC) Capital Maintenance		
\$1.3 billion of NSW Land and Housing Corporation expenditure over four years to support capital maintenance of the existing social housing portfolio. \$700.0 million of this will be met from proceeds of land transfers from Homes NSW in the Department of Communities and Justice.	\$1.3 billion	\$1.0 billion
Replacement of Fire Appliances Program		
This Fire and Rescue NSW project replaces aged essential firefighting vehicles and supplies additional vehicles to areas of high demand, based on community needs. This program is in addition to the new Class 1 and Class 3 replacement programs. It ensures the community is consistently supported by operational vehicles that are safe, reliable and incorporate the latest advances in technology.	\$393.5 million	\$68.0 million
Social Housing Accelerator		
LAHC, using funding from the Australian Government under the Social Housing Accelerator Agreement along with some existing LAHC funding will deliver 850 new social homes.	\$334.3 million	\$229.4 million

Project	Estimated total cost	Expenditure over four years to 2028-29
Social and Community Housing		
Continuing construction, upgrades and maintenance of social and community housing for First Nations communities through the Aboriginal Housing Office.	\$106.9 million	\$76.3 million
Regional Housing Program		
\$70.0 million interest-free debt financing and \$120.9 million from NSW LAHC's own sources to accelerate the delivery of social, affordable and private homes in regional New South Wales.	\$190.9 million	\$165.0 million
SES Fleet Replacement of vehicles, boats and trailers		
Investment in replacing the State Emergency Service fleet to ensure reliability and help provide a timely response to communities during floods, tsunamis and rescues.	\$119.2 million	\$27.7 million
RFS NSW Bushfire Inquiry Funding Package		
Significant items in this Rural Fire Service package will provide safety upgrades and new vehicles for bushfire fighting response and additional trucks for crews involved with hazard reduction works across the State.	\$117.9 million	\$30.2 million
Aboriginal Housing Office (AHO) Capital Maintenance		
Capital maintenance and upgrades of AHO's existing social housing stock, including roof replacements, recladding and window replacements, backlog maintenance on dwellings in critical need of repair.	\$105.6 million	\$76.1 million
SES Critical Communications Enhancement Program (CCEP) – Stay Safe Keep Operational		
The Stay Safe and Keep Operational program is to safely maintain existing agency front line communications while the enhanced Government Radio Network (GRN) is being delivered through the CCEP.	\$52.4 million	\$14.1 million
FRNSW Fit for Purpose Fire Stations		
This program will increase women's participation in the Fire and Rescue NSW workforce and enhance workplace safety, including upgrades and installing new female bathrooms at fire stations across the State.	\$50.0 million	\$13.7 million
SES Response to the 2022 Flood Inquiry		
Investment in state-wide flood rescue coordination, operational systems, equipment and multi-agency integration to ensure effective multi-agency flood rescue response across New South Wales.	\$36.4 million	\$7.5 million
Critical Police Radio Network Infrastructure in Southern Region		
To refresh end-of-life technology of the police radio network infrastructure covering the Southern, Southwest and Far West Regions of New South Wales.	\$26.6 million	\$11.7 million
Response to the independent review of 2021 Flood Events and Facilities Review		
Establish two new Zone headquarters in Northern and Western New South Wales to appropriately prepare for and respond to the risk of future flood events across the State and provide an uplift to eighteen critical priority unit facilities across the State.	\$25.1 million	\$14.2 million

Project	Estimated total cost	Expenditure over four years to 2028-29
Paging Network Refresh		
This project ensures the continuation of vital messaging functionality for the Rural Fire Service and other emergency service organisations responding to critical incidents and disasters across the State.	\$19.9 million	\$13.4 million
Police Marine Vessel Replacement Program Phase 2		
A new police vessel fleet to ensure that the NSW Police Force continues to have capability and capacity to deliver crucial services. This in addition to the new replacement Class 1 Vessel.	\$18.9 million	\$8.0 million
Badgerys Creek Land and New Fire Station		
Purchase land and build a new 24-hour fire station to service the new Western Sydney Airport and the surrounding Aerotropolis precinct, including its transport infrastructure and industrial, commercial and residential assets. The new fire station will be equipped with three engine bays to house new Pumper, Rescue Pumper and Heavy Rescue appliances.	\$15.4 million	\$9.9 million
Integrated Biometric Platform		
To replace the current outdated system with a multi-modal platform that provides a comprehensive profile of an offender including DNA, fingerprints and imagery.	\$13.8 million	\$7.8 million
National Firearms Register		
Implementation of the National Firearms Registry to enhance the sharing of timely and accurate firearms information to keep police and the community safe. Total cost of project is \$20.8 million jointly funded with Commonwealth on 50:50 basis, of which \$8.5 million is recurrent expenditure.	\$12.3 million	\$11.2 million
Parramatta Precinct Fire Stations Project		
The Parramatta Precinct project is an updated investment strategy for Wentworthville and Parramatta Fire Stations. Wentworthville will receive a new fit-for-purpose station, while Parramatta Fire Station will be expanded to support future growth and meet the increasing operational demands of the area.	\$11.9 million	\$10.7 million
Broken Hill Fire Station		
The new Broken Hill Fire Station will be a modern, purpose-built fire station accommodating the fire fighters from the two existing fire stations. The new fire station will be strategically placed to service the whole community.	\$9.8 million	\$7.9 million
Moss Vale Fire Station Upgrade		
The Moss Vale Fire Station will receive a major refurbishment to transform the current facility into a modern, fit for purpose fire station. This project will deliver on the Government's election commitment to improve fire services in Moss Vale.	\$2.0 million	\$0.7 million
Strategic Hosting Data Centre		
This project will deliver digital, and information-based policing systems and technology innovation and provide physical and cyber resilient NSW Police Force Information Technology systems.	\$10.3 million	\$10.3 million
Lithgow New Fire Station		
The proposed new Lithgow Fire Station amalgamates the current Lithgow and Lithgow West fire stations on a new centrally located site providing a modern, purpose-built fire station.	\$9.4 million	\$5.7 million

Project	Estimated total cost	Expenditure over four years to 2028-29
Byron Bay New Fire Station		
The replacement station is to be built on an alternative site. It will include two engine bays and provide staff with facilities for adequate privacy, safety and meet the clean fire station principles.	\$8.2 million	\$8.0 million
Charlestown New Fire Station		
The station is in a high growth, high demand zone and provides services to a large residential population, bushland urban interface as well as one of the region's major shopping precincts. This new station will incorporate facilities that address privacy, safety and clean fire station principles. Minor works on the site will be completed in 2025-26 with construction to commence in 2026-27.	\$7.7 million	\$7.2 million

Pages 4-11 to 4-19 of Chapter 4 of this *Infrastructure Statement* list the major capital projects and minor works for the Communities and Justice agencies, including the ETC, estimated expenditure to 30 June 2025, and 2025-26 allocation.

2.3 Creative Industries, Tourism, Hospitality and Sport



The Creative Industries, Tourism, Hospitality and Sport portfolio comprises the State's key cultural, hospitality, entertainment and tourism agencies. Together, these agencies drive initiatives to promote economic growth in New South Wales by creating jobs and leveraging investment in the arts, entertainment and tourism sectors.

\$700.7
million

Capital
Expenditure
to 2028-29

\$403.7
million

Capital
Expenditure
2025-26

This Budget includes capital investment of \$700.7 million in Creative Industries, Tourism, Hospitality and Sport over the four years to 2028-29. These initiatives will continue to build the State's visitor economy and attract investment in key industries, driving ongoing prosperity in New South Wales.

Table 2.5: Key new Creative Industries, Tourism, Hospitality and Sport projects commencing in 2025-26 included in this Budget

Project	Estimated total cost	Expenditure over four years to 2028-29
Brett Whiteley Studio Upgrade		
This project comprises a series of capital works to the Brett Whiteley Studio building, to maximise the use of the space available. Works include roof and plant replacement and installation of a lift to enhance accessibility. This project is partially funded by philanthropic donations.	\$8.0 million	\$3.0 million
Parkes Farmer Wing Asbestos Works		
Funding will support critical building remediation works, to remove and contain asbestos contaminated mortar and remedy waterproofing issues on the exterior of the Australian Museum Parkes Farmer Wing.	\$3.7 million	\$3.7 million
First Nations Gallery Redevelopment		
The Australian Museum will create a unique tourism experience for First Nations cultures and histories in New South Wales. The Gallery will be developed using a community centred approach, which will ensure the project will better meet the needs of First Nations communities. The Gallery will focus on truth-telling stories and provide tourists, educators and families with an engaging destination for First Nations history and culture.	\$3.0 million	\$3.0 million
State Library Critical Asset Maintenance Uplift		
Funding will rectify high-risk safety, compliance and collection security issues identified during condition assessments. Works include upgrades to security and CCTV systems, fire detection and sprinkler system improvements, building code compliance upgrades and replacement of roof membranes to resolve ongoing water ingress issues.	\$2.0 million	\$2.0 million
Broken Bay Sport and Recreation Centre Capital Works		
Demolition and removal of the existing swimming pool and the design and construction of a new sport or recreation activity.	\$1.6 million	\$1.6 million

Table 2.6: Key Creative Industries, Tourism, Hospitality and Sport projects continuing in this Budget

Project	Estimated total cost	Expenditure over four years to 2028-29
Establishment of Powerhouse Parramatta and expansion of the Museum of Discovery Centre in Castle Hill Establishing the first NSW Cultural Institution in Western Sydney. Creating new exhibition spaces to enable the Powerhouse to present exhibitions and showcase collections. Works are due for completion in late 2026.	\$840.0 million (NSW Government contribution)	\$140.5 million
Penrith Stadium Redevelopment The redevelopment of Penrith Stadium will turn it into a world-class suburban sport, entertainment and community venue. Construction commenced in 2025.	\$309.0 million	\$279.1 million
Powerhouse Ultimo Revitalisation Funding to continue the heritage revitalisation of the Powerhouse Museum. This will ensure fit for purpose spaces that will deliver a dynamic applied arts and sciences program, presenting exhibitions that showcase the Powerhouse Collection and attract international exhibitions and programs that support the visitor and creative industries.	\$300.1 million	\$256.9 million
Morisset Sports Facility Project Following the closure of the Myuna Bay Sport & Recreation centre in 2019, the Office of Sport has committed to construct the new Morisset Park Active Recreation Precinct. Works will include outdoor sport fields and courts, indoor multi-sport facilities and other outdoor facilities such as walking and bicycle trails.	\$40.4 million	\$29.0 million
Art Gallery Critical Asset Maintenance – Non-Collections Critical upgrades to the Art Gallery of NSW’s non collection items, including building and safety maintenance works. This project will ensure New South Wales state assets continue to be preserved and maintained for future years.	\$28.8 million	\$3.9 million
Museums of History Critical Works Program This project will deliver critical capital maintenance across a diverse portfolio of properties under the care of Museums of History NSW, including the Western Sydney Records Centre and a range of heritage-listed sites. With this funding, Museums of History NSW will undertake critical works to preserve the structural integrity of these historically significant places – ensuring they remain safe, secure and accessible for both public and staff whilst meeting compliance standards.	\$16.7 million	\$14.4 million
Qtopia Qtopia Sydney is the largest museum and cultural centre for queer history and culture in the world, with four different buildings within the campus, housed in the heritage-listed former Darlinghurst Police Station. The centre opened in 2024 with 18 exhibitions, spanning five major themes: HIV/AIDS, human rights, sexuality and identity, media representation and First Nations stories. It is also home to three performance venues and offers a rich program of events and performances.	\$12.7 million	\$10.8 million
Walsh Bay Arts Precinct Project The new Walsh Bay Arts Precinct will deliver a new home for making, performing and experiencing theatre, dance and music right on Sydney’s most iconic waterfront. The redevelopment will combine the existing heritage structures with new, state-of-the-art facilities for rehearsals, performance and planning by resident art companies.	\$372.9 million	\$1.8 million

Project	Estimated total cost	Expenditure over four years to 2028-29
National Art School Precinct Renewal		
Revitalisation of the Old Darlinghurst Gaol, home to the National Art School. The investment will reinvigorate the heritage site and enhance its reputation as a leading arts and education precinct.	\$18.4 million	\$11.1 million
Australian Museum Spirit House Critical Works		
Critical works to address the urgent heating, ventilation and air conditioning required within the Spirit House collections store at the William Street site.	\$5.4 million	\$4.4 million
Sydney Observatory Heritage Conservation Works		
Stage two critical works to support the conservation and preservation of Sydney Observatory.	\$4.2 million	\$3.0 million

Pages 4-20 to 4-23 of Chapter 4 of this *Infrastructure Statement* list the major capital projects and minor works for the Creative Industries, Tourism, Hospitality and Sport agencies, including the ETC, estimated expenditure to 30 June 2025, and 2025-26 allocation.

2.4 Customer Service



The Customer Service agencies are committed to providing high-quality customer service, effective and efficient regulation, and innovative digital solutions for NSW Government services. This includes delivering world-class services in person, online and over the phone, as well as improving the digital availability, reliability and security of NSW Government platforms, information and services.

\$917.9
million

Capital
Expenditure
to 2028-29

\$375.0
million

Capital
Expenditure
2025-26

The NSW Government is focused on investing in whole-of-sector digital information and communication technology to improve services for the people of New South Wales. A key ongoing goal is to promote a progressive, whole-of-sector approach to service provision, enabling agencies to promote productivity and efficiency.

This Budget includes \$917.9 million in capital investment for Customer Service initiatives and projects over the four years to 2028-29.

Box 2.4: Modernising critical IT infrastructure and innovating public services

This Budget continues to invest in critical IT infrastructure to improve the delivery of NSW Government services, ensure IT systems and digital platforms are safe from ongoing cyber threats and allow citizens to seamlessly access services through multiple channels.

Highlights include:

- strengthening the Public Safety Network to better support Emergency Services Organisations, government agencies, and local councils in delivering critical services that protect communities and infrastructure — particularly during emergencies and natural disasters
- strengthening the NSW Government's identity proofing and credential issuing processes and protecting people from identity theft through building an internationally interoperable NSW Digital ID and Wallet through the Digital Identity and Verifiable Credentials program
- investment in the Shared Services Optimisation GovConnect Onboarding Program which consolidates multiple Shared Services Hubs within a single ERP platform and service model to support more than 100 agencies across eight NSW Government Departments servicing more than 81,000 staff
- investment in new IT functionality that will enable Revenue NSW to improve unclaimed money processes
- investment to improve the ease with which people interact with Revenue NSW to meet their fines and debt obligations while improving personal information security and reducing cyber threats
- investments in the State's core land tax and duties systems to modernise, secure and streamline current functionalities to support assessment processes and compliance.

Table 2.7: Key new Customer Service projects commencing in 2025-26 included in this Budget

Project	Estimated total cost	Expenditure over four years to 2028-29
Revenue NSW tax system enhancements		
Delivering modernised, secured and streamlined system capabilities to increase tax compliance, enhancing fairness and integrity in the State's tax system.	\$39.1 million	\$39.1 million
Revenue NSW IT enhancements – Fines and debt portal		
Delivering modernised, secured and customer-centric systems.	\$30.9 million	\$28.0 million
Critical Infrastructure Management and Security program		
Strengthening the resilience of Public Safety Network (PSN).	\$27.3 million	\$27.3 million
Digital Identity and Verifiable Credentials		
Strengthening the NSW Government's identity proofing and credential issuing processes through building an internationally interoperable NSW Digital ID and Wallet.	\$15.4 million	\$15.4 million
Shared Services GovConnect Onboarding program		
Consolidating multiple Shared Services Hubs within a single ERP platform and service model to support more than 100+ agencies across eight NSW Government Departments servicing more than 81,000 staff.	\$11.5 million	\$11.5 million
Revenue NSW IT enhancements - Unclaimed Money		
Delivering enhanced system functionality to enable proactive payments through better capability to match, validate and integrate data with stronger privacy and risk mitigation.	\$9.5 million	\$9.5 million
New Service Centre - Campbelltown		
A new service centre will be opened in Campbelltown to provide greater access in the Macarthur region to government services through the Service NSW network.	\$2.5 million	\$2.5 million

Table 2.8: Key Customer Service projects continuing in this Budget

Project	Estimated total cost	Expenditure over four years to 2028-29
Critical Communications Enhancement Program		
This program consolidates Government-owned radio networks to facilitate co-ordinated Government response to critical incidents and emergencies.	\$1.3 billion	\$359.9 million
Modern Licensing and Compliance Program		
Modern Licensing and Compliance Program – Phase 2 Securing the Benefits of Digital Licensing, supporting digital delivery and regulatory transformation for both licence holders and regulators.	\$42.5 million	\$25.8 million
Reducing Extreme Cyber Security Risk – Digital Restart Fund		
Reducing extreme cyber security risk through enhancements to implement the Department's Cyber Security Strategy.	\$18.0 million	\$15.0 million

Pages 4-24 to 4-26 of Chapter 4 of this *Infrastructure Statement* list the major capital projects and minor works for the Customer Service agencies, including the ETC, estimated expenditure to 30 June 2025, and 2025-26 allocation.

2.5 Education



This Budget demonstrates the NSW Government's commitment to ensuring public school students in New South Wales have access to world class learning facilities.

\$11.0
billion¹

Capital
Expenditure
to 2028-29

\$3.0
billion¹

Capital
Expenditure
2025-26

The 2025-26 Budget includes \$9.0 billion in capital expenditure over the four years to 2028-29 that will deliver school facilities to help ensure every student has access to high quality learning environments at their local public school.

The NSW Government is delivering capital investments that help rebuild public education in New South Wales. These school upgrades further deliver on commitments made to ensure every community has access to a co-educational high school. The projects will support co-educational schooling changes in Kogarah-Bayside, Hornsby-Berowra and the Northern Beaches.

In line with the NSW Government's commitment to support rapidly growing communities, the 2025-26 Budget continues to deliver new schools in priority growth areas and precincts.

This year's investment will provide urgently needed school enrolment capacity in Western Sydney, the Hunter and the Illawarra to support new and growing suburbs. These projects will give local families peace of mind; that their children will have a place at a world-class public school close to home.

The NSW Government has continued its focus on regional communities, with an estimated investment of \$2.1 billion to improve school infrastructure in regional New South Wales. This includes the rebuild of Willyama High School as a brand-new, world-class school, and a new primary school for the growing West Dapto area.

The NSW Government is continuing its commitment to enhance high potential and gifted education (HPGE) opportunities in public schools across the state. This includes investment to deliver the HPGE Partner School program.

See Box 2.8 for a list of new projects in this Budget and further information on the Government's education program.

¹ Including school infrastructure, early childhood education and care and TAFE NSW funding

Box 2.5: New schools for New South Wales priority growth precincts

Figure 2.1: New South Wales priority growth precincts



New school projects announced in the 2025-26 NSW Budget

- Emerald Hills – new primary school
- Grantham Farm – new primary school
- West Dapto – new primary school
- Wilton – new high school.

Box 2.6: High Potential and Gifted Education Partner School Program

Further funding in the High Potential and Gifted Education Partner School Program will expand the opportunities for students across New South Wales. Across two tranches, 33 schools will receive specialist school facilities

Round 1

- Batemans Bay High School
- Bowral High School
- Canobolas Rural Technology High School, Orange
- Chifley College Dunheved Campus
- JJ Cahill Memorial High School, Mascot
- Koorringal High School, Wagga Wagga
- Lake Macquarie High School
- Lithgow High School
- Marrickville High School
- Matraville Sports High School
- South Sydney High School
- Tamworth High School
- Windsor High School

Round 2

- Broken Hill High School
- Casino High School
- Casula High School
- Cranebrook High School
- Forbes High School
- Galston High School
- Glenmore Park High School
- Holroyd High School
- Hunters Hill High School
- James Busby High School
- Lisarow High School
- Lurnea High School
- Mitchell High School
- Moruya High School
- Muswellbrook High School
- Narara Valley High School
- Sarah Redfern High School
- Springwood High School
- Strathfield South High School
- James Meehan High School

Box 2.7: Local School Renewal Projects

The Budget is also investing in local renewal projects at existing schools to improve facilities for students. Projects will be delivered across the State, including:

- Camden Public School – new covered outdoor learning area (COLA)
- Dulwich High School of Visual Art and Design – air conditioning
- Elizabeth Macarthur High School – new COLA
- Ferncourt Public School – air conditioning
- Lansvale East Public School – facilities upgrade
- Picton High School – conversion of open plan classrooms to traditional classrooms
- Rocky River Public School – facilities upgrade
- Shoal Bay Public School – hall redevelopment
- St Johns Park High School – hall air conditioning.

Box 2.8: Continuing the NSW Government's commitment to new and upgraded schools

For more information see <https://www.schoolinfrastructure.nsw.gov.au>

New Schools and Upgrades

- Asquith High School Upgrade
- Bayside High School (provisional name) Upgrade
- Northern Beaches Secondary College Freshwater Campus Upgrade
- Emerald Hills new primary school
- Ermington West Public School Upgrade
- Excelsior Public School Upgrade
- Grantham Farm new primary school
- Heathcote High School new multi-purpose hall
- Newington Public School Upgrade
- Rydalmere Public School Upgrade
- Rydalmere East Public School Upgrade
- Thornton Public School Upgrade
- West Dapto new primary school
- Wilton new high school
- Willyama High School Rebuild
- New and Upgraded Schools

Ongoing works – New and Upgraded Schools

- 100 new preschools
- Albury Thurgoona new primary school
- Austral Public School Upgrade
- Denison College of Secondary Education Campus Upgrades
- Birrong Boys and Girls High Schools Upgrades
- Bomaderry High School Upgrade
- Box Hill Public School and Box Hill High School – new schools
- Bungendore High School – new high school
- Calderwood new primary school
- Cammeray Public School Upgrade
- Carlingford West Public School Upgrade
- Castle Hill Public School Upgrade
- Cecil Hills High School Upgrade
- Concord High School Upgrade
- Condell Park High School Upgrade
- Cumberland High School Upgrade
- Dalmeny Public School Upgrade
- Dapto High School Covered Outdoor Learning Area
- Darcy Road Public School Upgrade
- Dundas Public School Upgrade
- Eagle Vale High School (selective sports stream)
- Edmondson Park new high school
- Flinders – Planning (new high school)
- Gables new primary school
- Gillieston Public School redevelopment
- Girraween Public School Upgrade
- Gledswood Hills High School – new high school
- Googong new high school
- Googong Public School – Stage 2
- Green Square Public School
- Greenway Park Public School Upgrade
- Hunter River High School Upgrade
- Huntlee new primary school and high school – new schools
- Jerrabomberra High School Upgrade – Stage 2
- Jordan Springs new high school
- Kingswood Public School Upgrade
- Kogarah Public School Upgrade
- Lennox Head Public School relocation
- Leppington Public School Upgrade
- Leppington/Denham Court new high school
- Liverpool High School (provisional name) redevelopment
- Macquarie Park Education Campus
- Matthew Pearce Public School Upgrade
- Medowie new high school
- Melrose Park new high school
- Melrose Park Public School redevelopment
- Midtown Macquarie Park new primary school
- Milton Public School Upgrade
- Moruya High School Upgrade
- Murwillumbah East Public School Upgrade
- Murwillumbah Public School Upgrade
- Narrabeen Sports High School Upgrade
- Newcastle High School redevelopment
- New halls for high schools in Griffith
- Nirimba Fields Public School
- Northbridge Public School Upgrade
- Northern Beaches Secondary College Cromer Campus Upgrade
- Northmead Creative and Performing Arts High School Upgrade
- Northmead Public School Upgrade
- Nowra new primary school
- Nowra East Public School Upgrade
- Orana Heights Public School Upgrade
- Orange Grove Public School Upgrade
- Parkview Public School Upgrade
- Parramatta East Public School Upgrade
- Penrith Lakes Environmental Education Centre Upgrade
- Pottsville – Planning (new high school)
- Punchbowl Public School Upgrade
- Randwick High School Upgrade
- Rhodes East new primary school
- Richmond Agricultural Centre
- Riverbank Public School Upgrade
- Rouse Hill High School Upgrade
- Rydalmere Education Campus
- Schofields Public School Upgrade
- Schofields/Tallawong new high school
- Shoalhaven former Anglican school site open for public education

Box 2:8: Continuing the NSW Government's commitment to new and upgraded schools (cont)

Ongoing works – New and Upgraded Schools (cont)

- Sir Joseph Banks High School Upgrade
- St Leonards Education Campus
- Sutherland Public School new multi-purpose hall
- Sydney Olympic Park – Carter St Precinct – new primary school
- Tallawong Public School
- Telopea Public School Upgrade
- The Forest High School relocation
- The Ponds High School Upgrade
- Ulladulla High School Upgrade
- Ulladulla Public School Upgrade
- Vincentia High School Upgrade
- Wentworth Point High School
- Wentworth Point Public School Upgrade – Stage 2
- Westmead schools projects
- West Ryde Multi-Sports Facility
- Wilton new primary school
- Wollumbin High School Upgrade
- Yennora Public School and Verona School Upgrade

Programs

- High Potential and Gifted Education Partner School program

Public preschools

- Albury Thurgoona new primary school
- Barrack Heights Public School
- Beelbangera Public School
- Berkeley West Public School
- Birrong Public School
- Blackett Public School
- Blacktown North Public School
- Blairmount Public School
- Blaxcell Street Public School
- Bomaderry Public School
- Booragul Public School
- Boorowa Central School
- Bourke Public School
- Bowraville Central School
- Bradbury Public School
- Cabramatta West Public School
- Carramar Public School
- Cartwright Public School
- Cecil Hills Public School
- Cessnock Public School
- Chullora Public School
- Crawford Public School
- Cringila Public School
- Curran Public School
- Deniliquin South Public School
- Edensor Park Public School
- Ellalong Public School
- Emerton Public School
- Eschol Park Public School
- Fairfield West Public School
- Gables new primary school
- Gillieston Public School
- Governor Philip King Public School
- Granville East Public School
- Granville South Public School
- Greenway Park Public School
- Greenwell Point Public School
- Guildford Public School
- Guildford West Public School
- Gulyangarri Public School
- Hanwood Public School
- Harcourt Public School
- Hayes Park Public School
- Hebersham Public School
- Heckenberg Public School
- Hillvue Public School
- Jindabyne Public School
- Kearns Public School
- Kearsley Public School
- Kingsgrove Public School
- Kurri Kurri Public School
- Lake Heights Public School
- Lake Illawarra South Public School
- Lansvale East Public School
- Leeton Public School
- Lennox Head Public School
- Leppington Public School
- Leumeah Public School
- Lynwood Park Public School
- Maryland Public School
- Melonba Public School
- Melrose Park Public School
- Menindee Central School
- Miller Public School
- Moorland Public School
- Morgan Street Public School
- Moss Vale Public School
- Mount Pritchard Public School
- Nirimba Fields Public School
- Nowra new primary school
- Nulkaba Public School
- Oatlands Public School
- Parkes East Public School
- Parkview Public School
- Prairievale Public School
- Queanbeyan East Public School
- Queanbeyan South Public School
- Robert Townson Public School
- Ruse Public School
- Sackville Street Public School
- Sanctuary Point Public School
- Shalvey Public School
- Sherwood Grange Public School
- Shortland Public School
- Tacking Point Public School
- Taree Public School
- Tenambit Public School
- Teralba Public School
- Thomas Acres Public School
- Toomelah Public School
- Tuggerawong Public School
- Umina Beach Public School
- Villawood North Public School
- Warialda Public School
- Weston Public School
- William Stimson Public School
- Wilton new primary school
- Wollongbar Public School
- Woodland Road Public School
- Yagoona Public School

Box 2.9: 100 public preschools in New South Wales

The NSW Government's record investment will deliver 100 public preschools and is the largest expansion of public preschools in NSW history. This investment continues as part of the 2025-26 Budget.

Figure 2.2: 100 new public preschools in New South Wales



Figure 2.3: New public preschools within the Blacktown local government area



Box 2.9: 100 public preschools in New South Wales (cont)

Figure 2.4: *New public preschools within the Campbelltown local government area*

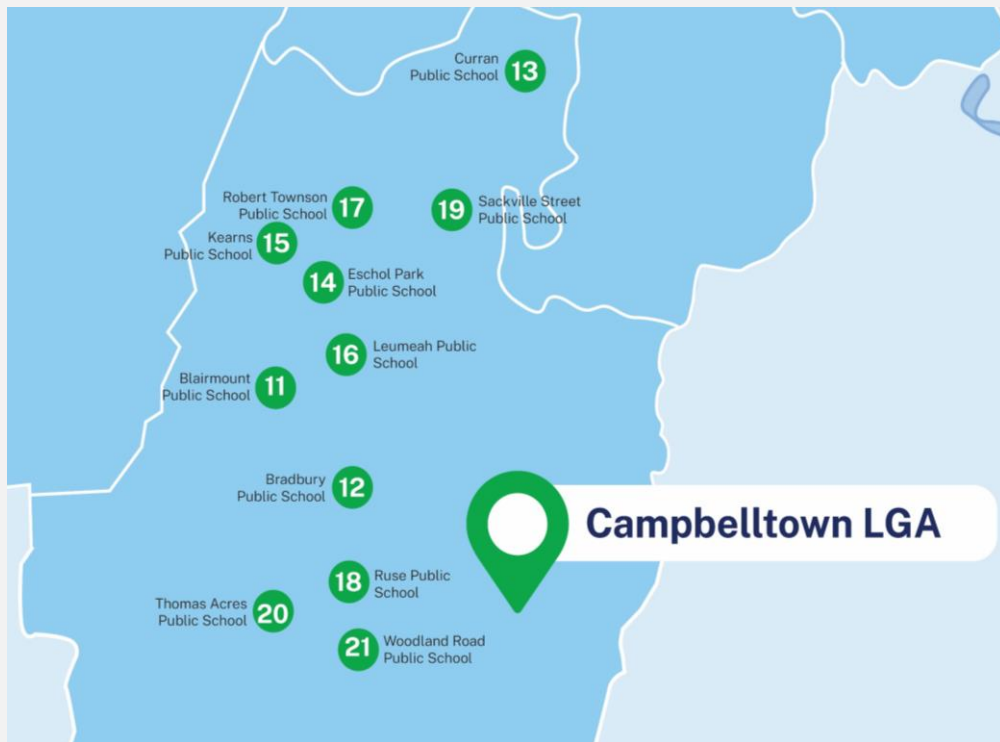


Figure 2.5: *New public preschools within the Cumberland, Fairfield and Liverpool local government areas*



Table 2.9: Key new Education projects commencing in 2025-26 included in this Budget

Project	Estimated total cost	Expenditure over four years to 2028-29
Emerald Hills new primary school A new primary school will be delivered to ensure growing communities in South West Sydney have access to world class public education facilities. The school will include a co-located public preschool.	n.a.	n.a.
Excelsior Public School Upgrade Major upgrades for Excelsior Public School will deliver new state-of-the-art facilities and will deliver school infrastructure to meet the needs of Castle Hill and the Hills Shire, alongside two additional major upgrades at Castle Hill Public School and Matthew Pearce Public School.	n.a.	n.a.
Grantham Farm new primary school This new school will support the growing needs of the Grantham Farm community in the North West Growth Area and allow families to access educational facilities close to home. The new school will be located on the corner of Crown Street and Hamilton Street in Grantham Farm. The school will include a co-located public preschool.	n.a.	n.a.
West Dapto new primary school This project commits to building a new primary school with permanent and fit-for-purpose classrooms to cater for the growing population in West Dapto. The school will include a co-located public preschool.	n.a.	n.a.
TAFE NSW Essential Capital Essential Capital provides ongoing funding certainty for the TAFE Asset Renewal Program (ARP) and the TAFE Digital Access Foundation projects. This funding will ensure the timely replacement or maintenance of assets across TAFE NSW campuses. The program will improve facilities, upgrade teaching equipment and support the overall sustainability of TAFE NSW's asset portfolio. This funding will also provide reliable internet, Wi-Fi connectivity and end-user digital & collaboration devices to meet essential digital access requirements for student learning and business operations across TAFE NSW campuses.	\$342.7 million	\$342.7 million
TAFE NSW Bankstown Campus Relocation To support the development of the new Bankstown/Lidcombe Hospital, TAFE NSW will relocate the existing Bankstown Campus to the Western Sydney University Tower in Bankstown CBD and refurbish the Padstow campus to support the relocation of some delivery to maintain critical skills training services to South-Western Sydney.	\$100.0 million	\$100.0 million

Table 2.10: Key Education projects continuing in this Budget

Project	Estimated total cost	Expenditure over four years to 2028-29
NSW Education Standards Authority's (NESA) Technology Reform Program ²		
NESA has initiated a significant technology transformation program to embark upon a modernisation agenda over six years. The program seeks to modernise, elevate and transform current technology platforms, building better resilience and responsiveness and improving user experience. The investment is being used to gradually upgrade core technology systems, uplift cyber security capabilities and reduce risk.	\$59.1 million	\$43.0 million
TAFE NSW Manufacturing Centres of Excellence		
TAFE NSW will continue work to establish three Manufacturing Centres of Excellence at existing campuses in the Illawarra, Western Sydney, and Hunter regions. These centres will focus on critical industries and deliver advanced manufacturing training to learners across regional and remote communities in New South Wales. The training offerings will include fee-free Higher Apprenticeships, Micro credentials, and Micro skills, enhancing the current suite of TAFE NSW programs. The centres will also foster strong partnerships with universities and industry to provide learners with access to cutting-edge equipment, expert knowledge, and valuable resources.	\$65.8 million	\$63.2 million
100 new government preschools		
Co-located with NSW public schools, including delivering a preschool with every new primary school project.	n.a.	n.a.
High Potential and Gifted Education Partner School program		
The NSW Government is committed to enhancing high potential and gifted education (HPGE) opportunities in public schools across the state. Part of this work includes further funding to deliver the HPGE Partner School program.	n.a.	n.a.
Albury Thurgoona new primary school		
A new primary school is being delivered for the growing community in Thurgoona and Wurlinga. The school will feature 18 new classrooms, specialist support learning facilities, a new library, multipurpose hall, canteen, sports field and sports courts and be co-located with a public preschool.	n.a.	n.a.
Box Hill Public School and Box Hill High School – new schools		
This project will deliver a new permanent primary school and permanent high school to address enrolment demand from new dwelling in the North West Growth Area. To meet the needs of local students in the short term, Box Hill Public School opened in temporary facilities and welcomed students for Day 1 Term 1 2025. Box Hill High School will open in temporary facilities from Day 1 Term 1 2026.	n.a.	n.a.
Riverbank Public School Upgrade and The Ponds High School Upgrade		
Work is underway to deliver upgrades to Riverbank Public School and The Ponds High School. The upgrades include refurbishments to Riverbank Public School and the extension of the existing hall and covered outdoor learning area (COLA). The upgrades to The Ponds High School will deliver permanent classrooms to replace demountable classrooms as well as new cricket nets. The project will also create recreational areas to be shared by the schools and local community.	n.a.	n.a.

² Previously referred to as NSW Education Standards Authority's (NESA) Cyber and Technology Program

Project	Estimated total cost	Expenditure over four years to 2028-29
Rouse Hill High School Upgrade		
This project will deliver a major upgrade for the growing communities in Sydney's North West, identified by the NSW enrolment growth audit as some of the fastest growing communities in the state. The upgrade will include a new two-storey building with nine classrooms, two science rooms, two science labs and a collaborative learning area.	n.a.	n.a.
Ulladulla Public School and Ulladulla High School Upgrades		
Significant upgrades will be delivered to Ulladulla Public School and Ulladulla High School to ensure growing regional areas have access to world-class educational facilities. The project will deliver upgraded student amenities, improved student accessibility and new permanent classrooms to make way for the removal of demountables from both schools.	n.a.	n.a.
Wentworth Point High School		
Wentworth Point High School opened for Day 1 Term 1 2025, catering to Year 7 students, with an additional year of schooling added each year. Work is continuing on the next stage of the project which will deliver a new multipurpose hall, new outdoor spaces, games courts, canteen facilities and a sports field which will be open to the community outside of school hours.	n.a.	n.a.
Austral Public School Upgrade		
Work is underway on a major update to Austral Public School which will include new fit-for-purpose learning spaces and improved core facilities to support the growing student population in the area. The project will deliver 20 new classrooms, three new support learning classrooms and refurbishment of the administration facilities and library.	n.a.	n.a.
Eagle Vale High School Upgrade (selective sports stream)		
This project will deliver an upgrade to Eagle Vale High School to address growing demand in South-West Sydney. The upgrades will include a selective sports stream, giving students the opportunity to achieve their academic and sporting potential. Work is continuing on a new running track, pickleball courts, lighting, multipurpose hall, Health and PE Learning Hub, PE Fitness Laboratory and the resurfacing of the school's full-sized playing field.	n.a.	n.a.

Pages 4-27 to 4-32 of Chapter 4 of this *Infrastructure Statement* list the major capital projects and minor works for the Education agencies, including the ETC, estimated expenditure to 30 June 2025, and 2025-26 allocation.

2.6 Health



The NSW Government is continuing to invest in health infrastructure to ensure communities across the State have access to high quality healthcare.

This includes ongoing investment in hospital upgrades and new health facilities that aim to build a modern, resilient health system that meets both current needs and future demand for health services.

\$12.4
billion

Capital
Expenditure
to 2028-29

\$3.3
billion

Capital
Expenditure
2025-26

This Budget includes \$12.4 billion³ of capital investment over the four years to 2028-29 in health infrastructure, which includes both hospitals and health facilities as well as a number of specifically funded health programs.

The four year spend demonstrates a commitment by the NSW Government to better align with capacity, need and economic conditions. This investment balances the delivery of essential health infrastructure to support improved health outcomes while maintaining long-term budget discipline and minimising financial risk to the state.

Box 2.10: Rouse Hill Hospital – Additional funding of \$210.0 million for Maternity Services in Western Sydney’s first new adult hospital in over 40 years

The NSW Government is already investing \$700.0 million in the new Rouse Hill Hospital. The new Hospital will deliver much-needed contemporary healthcare facilities for the growing North West Sydney community.

The project scope of the new Rouse Hill Hospital has now been expanded to include the full range of maternity and birthing services. This Budget includes additional State funding of \$90.0 million, with a further \$120.0 million also announced by the Australian Government. These two funding commitments increase the total investment for the project to \$910.0 million.

Adding maternity and birthing services to the new development will consolidate acute clinical services and expertise to deliver safer and more efficient care on the one site. This reduces the need for mothers and their families to travel further to other hospitals for their maternal care.

These include:

- birthing rooms
- a maternity inpatient unit
- additional staffing areas.

Further project planning and design work, in consultation with stakeholders and the community, is required in consideration of the exact scope for expanded maternity services.

³ This includes \$492.2 million of capital expensing from the Ministry of Health’s expense budget over the next four years. In 2025-26, health infrastructure spending includes \$141.0 million of capital expensing.

Box 2.11: New Paediatric Hospice at the Children’s Hospital Westmead – “Mounties Care Cottage”

A new children’s hospice will be built in Western Sydney within The Children’s Hospital at Westmead to support children and young people with life-limiting illness and their families.

It is only the second hospice of its kind in the state, to provide a home-like environment where children can receive respite, symptom management and end of life care.

Located in Western Sydney, the new hospice will be called “Mounties Care Cottage” and will support families from across New South Wales. The new hospice is inspired by Sydney boy, Rio Fowler, and the work of Rio’s Legacy. Young Rio passed away in 2018.

This Budget includes \$22.3 million towards the project, with the Mounties Group contributing \$13.0 million over 10 years through the Sydney Children’s Hospitals Foundation.

The new hospice will be integrated into the Sydney Children’s Hospitals Network and will accommodate the specialist needs of the paediatric palliative patients and ensure that they and their families receive respectful and appropriate end-of-life care and support.

Planning and design for the new dedicated children’s hospice is set to commence this year.

Box 2.12: NSW Health Pathology Statewide Hub

The 2025-26 Budget will deliver a new \$492.0 million NSW Health Pathology Statewide Hub as part of the Government’s plan to improve essential health services for the people of New South Wales.

The new and upgraded statewide pathology hub will support the delivery of local and statewide clinical pathology, public health, medical research, and specialised support services on the Westmead campus.

This investment is essential for the delivery of new and enhanced pathology services on the Westmead Health Precinct, including a new build for the Institute of Clinical Pathology and Medical Research.

It will also include an upgrade to the high security PC4 biocontainment laboratory – the only one in New South Wales. This lab is used to test, isolate and research high risk infectious diseases that has the potential to be a major infection threat to the wider community.

Table 2.11: Key New Health Projects commencing in 2025-26 included in this Budget

Project	Estimated total cost	Expenditure over four years to 2028-29
NSW Health Pathology Statewide Hub To develop a pathology hub that will support the delivery of local and state-wide clinical pathology, public health, medical research, and specialised support services on the Westmead campus. The project will incorporate the relocation of the Institute of Clinical Pathology and Medical Research (ICPMR) and complement the recently expanded Children's Hospital at Westmead Pathology service.	\$492.0 million	\$12.5 million
Wollongong Hospital and Health Precinct Further planning to support the future expansion and redevelopment of the Wollongong Hospital and Health Precinct. The proposed expansion involves early and enabling works including site investigation, land acquisition, and refurbishment works.	\$220.0 million	\$36.0 million
Royal Hospital for Women – Planning and Interim Works Investment for planning and interim works required at the Royal Hospital for Women (RHW) at Randwick. The interim works may include early and enabling works, refurbishment and utility upgrades, as well as any critical equipment requirements.	\$11.3 million	\$11.3 million

Table 2.12: Key Health projects continuing in this Budget⁴

Project	Estimated total cost	Expenditure over four years to 2028-29
Bankstown Hospital (New) Rebuilding of the Bankstown hospital on a new site to transform the delivery of healthcare in the area to meet the growing health needs of Southwestern Sydney communities. Additional funding has been approved to support escalation in construction costs identified during the planning stage to effectively integrate hospital inpatient services on one site in the centre of Bankstown.	\$2.0 billion	\$927.8 million
Nepean Hospital and Integrated Ambulatory Services Stage 1 and 2 This ongoing major redevelopment at the Nepean Hospital will ensure Western Sydney communities are provided with world-class health services in a purpose-built, patient-focused environment designed to meet the growing health needs of the community well into the future.	\$1.0 billion	\$214.8 million
Royal Prince Alfred Hospital Redevelopment This significant redevelopment will enhance the world-leading healthcare already provided at Royal Prince Alfred Hospital (RPAH) and transform the campus to bring together new models of care, enabling technology and physical infrastructure to support service expansion and changes in service delivery.	\$940.0 million	\$587.6 million
John Hunter Health and Innovation Precinct The redevelopment of the John Hunter and John Hunter Children's Hospitals will deliver enhanced healthcare facilities and provide additional capacity to meet the demands of the Greater Newcastle, Hunter New England and northern NSW regions.	\$835.0 million	\$264.8 million

⁴ Includes projects with estimated total costs greater than \$200.0 million only.

Project	Estimated total cost	Expenditure over four years to 2028-29
Rouse Hill Hospital		
The new Rouse Hill Hospital will deliver a new contemporary health care facility for the growing Northwest community. The new hospital is expected to include an emergency department and Primary Access Clinic to support urgent and non-urgent care, dedicated inpatient beds, day surgery services, adult and paediatric short stay unit, ambulatory and outpatients care, comprehensive medical imaging services, and prehabilitation and rehabilitation services. It will also include a full range of maternity services including birthing.	\$790.0 ⁵ million	\$576.4 million
A further \$120.0 million has been announced by the Australian Government and will increase the total investment for the project to \$910.0 million.		
New Shellharbour Hospital (including car park) and Integrated Services		
The New Shellharbour Hospital and Integrated Services project will transform access to healthcare for the Shellharbour community, providing a wide range of modern and expanded health services and reducing the need to travel out of the area for a range of health-related treatments.	\$781.9 million	\$579.8 million
The project includes a provision for the transport upgrades including road intersection works.		
Liverpool Health and Academic Precinct (excluding car park)		
The Liverpool Health and Academic Precinct will provide a significant boost in health services to South Western Sydney's growing population through an integrated cancer centre, expansion of the hospital's emergency department, neonatal intensive care, maternity and children's services, and ambulatory and outpatient care.	\$780.0 million	\$305.7 million
Single Digital Patient Record		
This program aims to unify and integrate various existing electronic health records systems across NSW Health. It will create a centralised, secure, and integrated digital record system for each patient across the NSW Health system.		
The investment in the Single Digital Patient Record initiative will give clinicians easy and timely access to a holistic record of an individual's medical information. This will include real-time access to medical records resulting in improved health outcomes for patients and empowering clinical teams to make informed decisions promptly regarding patient care, diagnosis and treatment protocols. The initiative will streamline processes and reduce administrative burden on health staff.	n.a.	\$283.3 million
State-wide Mental Health Infrastructure Program		
This Program delivers the infrastructure required to progress key mental health reforms and strategic priorities across the state for improved mental health care. It will also ensure that the Government's investment meets future demand for mental health services. This includes child and adolescent and older persons services, forensic services and facilities to promote recovery and enhance opportunities for people to transition to or receive care within community settings.	\$669.8 million	\$323.5 million
The Children's Hospital at Westmead Stage 2 Redevelopment (Including Car Park)		
This investment ensures that the Children's Hospital at Westmead continues to be a world leader in providing paediatric services for children locally and across the State. In partnership with Sydney Children's Hospital Foundation, it will see the construction of a new paediatric services building and	\$659.1 million	\$156.3 million

⁵ This excludes the \$120.0 million Australian Government contribution announced.

Project	Estimated total cost	Expenditure over four years to 2028-29
<p>multi-storey car park to serve the existing and expanded Children's Hospital.</p> <p>Additional funding was approved to fit out level 13 of the new Paediatric Services Building (PSB), which will house the Kookaburra Centre.</p> <p>The Kookaburra Centre will be the first complex care centre of its kind in Australia, offering a multidisciplinary model of care that includes inpatient wards specifically designed to cater for children with complex needs and their families.</p>		
<p>Sydney Children's Hospital, Randwick – Stage 1 Children's Comprehensive Cancer Centre</p> <p>The redevelopment is part of a \$1.5 billion investment in health infrastructure as part of the Randwick Health and Innovation Precinct.</p> <p>The Minderoo Children's Comprehensive Cancer Centre will include advanced laboratory spaces and deliver integrated, specialist cancer treatment, education and research, aiming to transform childhood cancer treatment and become one of the world's leading paediatric cancer centres.</p>	\$658.0 million	\$146.7 million
<p>NSW Ambulance Infrastructure Program</p> <p>This program will deliver 30 additional ambulance stations as part of the NSW Ambulance Infrastructure Program. It will provide local paramedics with modern, purpose-built infrastructure to better meet the emergency medical care needs of communities across New South Wales.</p>	\$615.5 million	\$456.9 million
<p>Albury Wodonga Regional Hospital</p> <p>A major redevelopment of Albury Hospital will provide enhanced and expanded health care services in contemporary facilities to support Albury, Wodonga and border communities now and into the future.</p> <p>The project will support the region's growing population, provide contemporary models of care and better connectivity across the Albury Hospital campus.</p>	\$558.0 ⁶ million	\$486.2 million
<p>Fairfield Hospital Redevelopment</p> <p>The redevelopment will provide the community with new and enhanced integrated health services closer to home. Expanding Fairfield Hospital will deliver more inpatient beds, increase capacity of critical care services, and other hospital and health services.</p>	\$550.0 ⁷ million	\$318.8 million
<p>Integrated Mental Health Complex at Westmead</p> <p>The new Integrated Mental Health Complex will enable mental health services currently located at Cumberland Hospital West Campus to relocate to a new, purpose-built mental health facility in the Westmead Health Precinct, connected to Westmead Hospital.</p>	\$540.0 million	\$408.5 million
<p>Ryde Hospital Redevelopment</p> <p>The redevelopment of Ryde Hospital in Sydney will build on existing services and include a new emergency department, medical imaging unit, intensive care unit, operating theatres, and day-only surgical endoscopy spaces.</p> <p>The Ryde Hospital Redevelopment will transform the delivery of healthcare in Ryde and its surrounding suburbs, ensuring the local communities can receive the care they need closer to home in a contemporary health setting.</p>	\$526.8 million	\$411.6 million
<p>Shoalhaven Hospital Redevelopment</p>	\$440.4 million	\$154.0 million

⁶ This includes the Australian Government contribution of \$20.0 million as part of the Albury City Deal.

⁷ This does not include the Australian Government commitment of \$80.0 million for emergency department expansion.

Project	Estimated total cost	Expenditure over four years to 2028-29
<p>The redevelopment is a major upgrade of Shoalhaven District Memorial Hospital, aiming to create a regional health hub and improve access to care for the Shoalhaven and surrounding communities. The redeveloped hospital will be named the Shoalhaven Memorial Hospital. The hospital's new name honours the area's important history and ongoing links with the Australian Defence Force and aligns with more contemporary hospital naming conventions.</p> <p>This project includes a new seven-storey acute services building and refurbishment of existing facilities, with a focus on modernising medical facilities, increasing capacity, and addressing issues of access and equity.</p>		
<p>St George Hospital – Ambulatory Care, Day Surgery, Sub-Acute Inpatient Building (Including Car Park)</p> <p>The redevelopment will deliver a world-class Ambulatory Care Precinct, bringing together a range of ambulatory and out-patient services. It will not only provide the St George and Sutherland community with access to new, state-of-the-art facilities, but also enhance patient outcomes by improving collaboration between multidisciplinary teams.</p>	\$411.0 million	\$147.8 million
<p>Canterbury Hospital Redevelopment</p> <p>The redevelopment will maximise the capacity of existing facilities available at the Canterbury Hospital campus, including the main hospital building and the Canterbury Health Centre.</p> <p>This redevelopment includes a new multi-storey building with enhanced services, extensions and upgrades to existing health facilities, and improved accessibility. The project focuses on improving patient care and enhancing the hospital's ability to serve the diverse Canterbury community.</p>	\$350.0 million	\$344.0 million
<p>Eurobodalla Regional Hospital Redevelopment</p> <p>The new Eurobodalla Regional Hospital will deliver more health services than currently available at both the Moruya and Batemans Bay Hospitals combined.</p> <p>The new hospital will offer a range of expanded and enhanced healthcare services for the entire Eurobodalla Shire community from Narooma to Batemans Bay.</p>	\$330.0 million	\$188.4 million
<p>Port Macquarie Base Hospital Mechanical and Clinical Infrastructure upgrade</p> <p>The upgrade of Port Macquarie Base Hospital will include the expansion of the Emergency and Maternity departments, and essential upgrades to the mechanical systems of the existing hospital building.</p>	\$265.0 million	\$130.0 million
<p>Grafton Hospital Redevelopment</p> <p>The redevelopment will improve health outcomes and meet the growing needs of Grafton and surrounding communities.</p> <p>It includes a new three-storey building with expanded emergency services, medical imaging, and a larger surgery suite. The project aims to enhance capacity, improve models of care, and support the needs of the Grafton and Clarence Valley communities.</p>	\$263.8 million	\$200.5 million
<p>Key Health Worker Accommodation Program</p> <p>The program aims to support the recruitment and retention of over 500 health workers and their families in regional New South Wales by providing a range of new worker accommodations.</p> <p>The program is designed to address the housing crisis in these areas and make them more attractive for healthcare professionals to work in these regional towns and communities.</p>	\$200.1 million	\$150.0 million

Project	Estimated total cost	Expenditure over four years to 2028-29
Bathurst Hospital Redevelopment		
The redevelopment will modernise and expand health services for the region, including the surrounding communities of Blayney, Oberon, and Rylstone.		
This project aims to provide patients, staff, and visitors with improved healthcare facilities and expanded healthcare services. The redevelopment includes a mix of new and refurbished areas, including an expanded emergency department, maternity services, and a new mental health inpatient unit.	\$200.0 million	\$187.1 million

Pages 4-33 to 4-38 of Chapter 4 of this *Infrastructure Statement* list the major capital projects and minor works for the Health agencies, including the ETC, estimated expenditure to 30 June 2025, and 2025-26 allocation.

2.7 Planning, Housing and Infrastructure



The Department of Planning, Housing and Infrastructure and its affiliated agencies shape thriving communities, public spaces, places and economies. By creating vibrant, productive spaces and precincts; managing lands, assets and property effectively; and delivering affordable and diverse housing, the Department is building a sustainable future for the people of New South Wales.

\$3.0
billion

Capital
Expenditure
to 2028-29

\$1.2
billion

Capital
Expenditure
2025-26

This Budget includes \$3.0 billion in capital expenditure for Planning, Housing and Infrastructure initiatives and projects over the four years to 2028-29.

Box 2.13: Building and maintaining community assets

The Department of Planning, Housing and Infrastructure and its affiliated agencies are responsible for managing a large asset portfolio across the State for the benefit of communities, including public parks, recreational facilities and other land and property assets. The Government is investing to build, upgrade and maintain key infrastructure for the community.

Key capital initiatives include:

- \$58.9 million for essential infrastructure upgrades to the historic Pyrmont Bridge, a crucial active transport link between the Sydney CBD and Pyrmont
- \$22.0 million for Property and Development NSW for critical asset maintenance, and rectification works for Warrawong Sea Walls
- \$10.0 million for priority infrastructure and asset maintenance in Sydney Olympic Park to support sporting and entertainment events
- \$9.0 million for asset renewal throughout the Botanic Gardens of Sydney, including the upgrade of the fire abatement system at the Blue Mountains Botanic Garden, Mount Tomah
- \$4.6 million for Crown Lands to undertake critical asset maintenance of community assets and to continue to bring priority fire trails up to fair condition
- \$4.3 million for priority infrastructure and asset maintenance across Greater Sydney Parklands.

Table 2.13: *Key new Planning, Housing and Infrastructure projects commencing in 2025-26 included in this Budget*

Project	Estimated total cost	Expenditure over four years to 2028-29
Moore Park South To deliver new green open space for recreational use at Moore Park South.	\$50.0 million	\$50.0 million
Pymont Bridge Structural Works To complete the structural repairs and restoration of this 100-year-old state heritage listed bridge.	\$87.9 million	\$33.9 million
Property and Development NSW Asset Maintenance Program (Tranche 3) Additional funding to support Property and Development NSW to address priority asset maintenance.	\$17.0 million	\$17.0 million
Sydney Olympic Park Infrastructure and Asset Maintenance Stage Two Additional funding to support the infrastructure and asset renewal program at Sydney Olympic Park.	\$10.0 million	\$10.0 million
Royal Botanic Gardens and Domain Trust – Asset Renewal Program Additional funding to support the asset renewal program to address priority infrastructure maintenance at the Botanic Gardens.	\$9.0 million	\$9.0 million
Warrawong Sea Walls The delivery of upgrades to the Sea Walls at Warrawong Parklands along the shores of Lake Illawarra.	\$5.0 million	\$5.0 million
Crown Lands – Safer Assets for the Community To deliver upgrades to buildings and infrastructure located on Crown lands.	\$3.6 million	\$3.6 million
Centennial Park and Moore Park Trust – Asset Renewal Program For priority infrastructure and asset maintenance across Centennial Parklands and Callan Park.	\$3.3 million	\$3.3 million
Crown Lands – Strategic Fire Trails Upgrade and Maintenance To upgrade and maintain the operational fire trail network on Crown lands.	\$1.0 million	\$1.0 million
Parramatta Park Trust – Asset Renewal Program For priority infrastructure and asset maintenance at Parramatta Park.	\$1.0 million	\$1.0 million

Table 2.14: Key Planning, Housing and Infrastructure projects continuing in this Budget

Project	Estimated total cost	Expenditure over four years to 2028-29
Bradfield City Centre Stage 1 Enabling Works		
Early works and site preparation for the Bradfield City Centre, which will be situated on the doorstep of the new Western Sydney International (Nancy-Bird Walton) Airport.	\$870.6 million	\$494.8 million
Advanced Manufacturing Readiness Facility (AMRF)		
The AMRF will support industry, government and research institutions to collaborate, develop, scale up and commercialise advanced manufacturing technologies by providing specialist equipment and workspaces, and other services.	\$261.9 million	\$247.6 million
Open Space Projects in Transport Oriented Development accelerated precincts		
To deliver open space projects funded from the Commonwealth's Housing Support Program.	\$218.9 million	\$209.9 million
Strategic Open Spaces Program Across Greater Sydney		
The Strategic Open Spaces program is focused on creating, promoting, and encouraging enjoyable functional spaces to support healthy and active communities.	\$140.0 million	\$10.7 million
Office Hubs in Dubbo and Coffs Harbour		
To consolidate existing tenancies and provide modern, efficient office spaces to help attract and retain regional government workers.	\$119.9 million	\$103.1 million
Cumberland Plain Conservation Plan – Land Acquisitions		
To support the delivery of future homes in Western Sydney through conservation activities under the Cumberland Plain Conservation Plan, including capital expenditure as part of a total additional capital and recurrent investment of \$137.9 million this Budget.	\$109.1 million	\$55.2 million
Property and Development NSW Asset Maintenance Program (Tranche 2)		
Key maintenance across the State's property portfolio.	\$22.8 million	\$11.4 million
NSW Planning Digital Environment		
To deliver the NSW Planning Portal Customer-First Program and embed a new operating model to enable system improvements and delivery of innovation and efficiencies.	\$20.4 million	\$11.7 million
Valnet Framework Program		
A new interactive customer-centric platform for land valuation and data management, replacing legacy systems and manual processing in the Office of the Valuer-General.	\$16.7 million	\$6.0 million
Recreational Improvements at Centennial Parklands		
To construct new sports and recreational facilities, using funds raised by the Trust.	\$12.7 million	\$8.0 million

Pages 4-39 to 4-45 of Chapter 4 and 5-11 and 5-13 of Chapter 5 of this *Infrastructure Statement* list the major capital projects and minor works for the Planning, Housing and Infrastructure agencies, including the ETC, estimated expenditure to 30 June 2025, and 2025-26 allocation.

2.8 Primary Industries and Regional Development



Primary Industries and Regional Development helps to strengthen regional communities and economies. Projects seek to grow primary industries through sustainable land use practices, create regional employment opportunities and manage the responsible use of natural resources, including advancing sustainable mining and resource development.

\$550.4
million⁸

Capital
Expenditure
to 2028-29

\$185.0
million⁸

Capital
Expenditure
2025-26

Primary Industries and Regional Development is also responsible for overseeing the delivery of transformative infrastructure projects across regional New South Wales.

This Budget includes \$550.4 million for projects across Primary Industries and Regional Development portfolio over the four years to 2028-29.

Box 2.14: Supporting research and development

The Department of Primary Industries and Regional Development (DPIRD) has a diverse portfolio of assets and resources across rural and regional New South Wales that support local communities, grow regional economies and bolster the State's \$20 billion primary industries sector which is facing growing biosecurity breaches.

The NSW Government is committed to investments that support the research and response capabilities through a range of priority projects, including:

- \$58.2 million to remediate and upgrade critical research facilities, addressing a backlog of maintenance issues to enhance visitor safety and improve the efficiency of managing the Primary Industries asset portfolio. This is funded through the Restart NSW program
- \$12.5 million for upgrades of research stations to transition research and development in line with government priorities, including a capital uplift across research field sites to ensure facilities are fit for purpose for modern research practices.

Table 2.15: Key new Primary Industries and Regional Development projects commencing in 2025-26 included in this Budget

Project	Estimated total cost	Expenditure over four years to 2028-29
Research Station Upgrades		
The project will transition research and development in line with government priorities and statutory responsibilities and includes a capital uplift across sites to meet future research and development priorities. The project will also enable strategic workforce planning to ensure the NSW Government retains areas of critical capability.	\$12.5 million	\$12.5 million
Lower Darling Fish Passage Phase 2		
Construction and commissioning of a new fishway at Burtundy Weir in the Lower Darling River in Western New South Wales (NSW). The project is part of the Commonwealth's Lower Darling Fish Passage Program established in response to the fish deaths in the 2018-19 summer in the Lower Darling River. Burtundy Weir is located 133km upstream from the confluence of the Lower Darling River and the River Murray and is the first barrier experienced by fish heading upstream from the Murray River junction.	\$4.9 million	\$4.9 million

⁸ Includes infrastructure expenditure classified as inventory in accordance with Australian Accounting Standards.

Table 2.16: Key Primary Industries and Regional Development projects continuing in this Budget (capitalised)

Project	Estimated total cost	Expenditure over four years to 2028-29
World-Class Food and Fibre (Stage 1 and 2)		
Enhancements to research stations (including glasshouses, exotic disease diagnostic instruments and on-farm sensors and data technology) will work towards boosting agricultural productivity and support world class food and fibre production.	\$105.9 million	\$13.1 million
Research Services Critical Infrastructure Upgrades		
The project includes capital upgrades at priority sites and remediating sites surplus to requirements to meet workplace health and safety, and legal obligations, protect the safety of visitors and more efficiently manage the Primary Industries asset portfolio. Major works include building remediation and demolition to support increased asset utilisation and operating efficiency.	\$58.2 million	\$51.1 million
Local Land Services Future Fund		
To improve Local Land Services (LLS) core services to farmers, land managers and regional communities including the upgrade of critical assets which are degraded and not fit-for-purpose. This will address growing work, health and safety risks and improve the State's ability to respond to natural disasters and biosecurity emergencies. Funding will also go towards upgrades to bait and vet facilities, water security assets, emergency response assets and regional office spaces.	\$45.4 million	\$17.6 million
R&D partnership with the Grain Research and Development Corporation		
The Research and Development Partnership with the Grains Research Development Corporation is a 10 year contracted partnership that will enhance productivity of plant and livestock systems.	\$19.3 million	\$4.0 million
Offshore Artificial Reefs		
Involves construction of multi-component, purpose-built artificial reefs off the NSW coast to provide significant returns on investment through new fishing tourism opportunities in addition to ecological benefits. The reefs enhance fishing and tourism opportunities, by creating additional habitat for local aquatic organisms and fish such as Kingfish, Trevallies, Snapper, Flathead, Whiting and Morwongs species.	\$8.8 million	\$2.4 million
Snowy 2.0 Gaden Trout Hatchery		
The project will expand the Gaden Trout Hatchery capacity to produce up to 20 tonnes of additional fish to stock the Tantangara Reservoir and Lake Eucumbene with salmonid fish. This will address potential risks to the trout fishery from the translocation of Redfin perch due to the Snowy 2.0 project. The project will also build resilience into the existing populations of both Macquarie perch and Stocky galaxias and help the long-term survival of both species within the upper Murrumbidgee Catchment, should a new incursion of pest fish occur.	\$5.3 million	\$4.6 million
Orange Agricultural Institute Upgrade		
The project will upgrade facilities at the Orange Agricultural Institute following damage caused by a natural disaster. The facilities include houses, administration buildings, the State Emergency Centre, sheds and glasshouses.	\$4.8 million	\$4.6 million

Project	Estimated total cost	Expenditure over four years to 2028-29
Marine Estate Management Strategy – Stage 3		
The Strategy aims to improve water quality, estuary health and other biodiversity and environmental metrics. Stage 3 of the Strategy builds on the progress of stages 1 and 2, which have already delivered strong outcomes and received state, national and international acclaim, and will continue the delivery of the strategy, improving sustainable fish stock metrics while maintaining recreational fishing use metrics.	\$3.4 million	\$1.7 million
Avian Influenza Biosecurity Response Capability		
The project will support High Pathogenicity Avian Influenza (HPAI) preparedness and national response capability, through the procurement of specialist equipment for biosecurity surveillance and response which will assist for outbreaks in the production sector and Australian wildlife. Capital investments will specifically support HPAI detection, diagnosis, response, and prevention of spread.	\$2.2 million	\$1.4 million

Box 2.15: Supporting economic growth in the regions

The NSW Government is committed to investments in regional New South Wales that support regional job creation and economic development. Major Investments to lay the foundation for economic growth after bringing inflation back under control include:

- \$332.2 million to transform Parkes into a national freight and logistics hub, centred on its proximity to the Inland Rail Project and the Trans-Australia Railway
- \$224.8 million to develop a new business hub in Moree specialising in horticulture, agrifood processing, freight logistics and renewable energy, located right in the heart of Australia's most productive grain region
- \$212.2 million for Wagga Wagga to capitalise on the Inland Rail Project and existing Bomen Business Park to support existing and new companies to do business, including in renewables, recycling, advanced manufacturing, agribusiness and freight and logistics
- \$196.3 million in the Snowy Mountains region to support the delivery of mixed housing supply and grow the region into a year-round tourism destination, with a focus on tourism, recreation, commercial and residential businesses
- \$45.0 million to support farmers and agribusinesses in the adoption of digital technology (ag-tech) and on-farm connectivity solutions to improve resource management, boost productivity and enhance water security.

Table 2.17: Key Primary Industries and Regional Development projects continuing in this Budget (inventory)

Project	Estimated total cost	Expenditure over four years to 2028-29
Parkes Special Activation Precinct		
The precinct takes advantage of Parkes' proximity to the Inland Rail Project and Trans-Australia Railway to establish an efficient freight and logistics hub and facilitate establishment of recycling and resource recovery, critical mineral processing, food manufacturing and renewable energy industries.	\$273.9 million	\$47.6 million
Moree Special Activation Precinct		
The precinct capitalises on the region's existing agricultural industry, secure water resources and transport access by providing Moree with a new business hub, specialising in high value horticulture, agrifood processing, freight logistics and renewable energy.	\$196.5 million	\$160.0 million
Wagga Wagga Special Activation Precinct		
The precinct capitalises on the Inland Rail Project, existing Bomen Business Park, attracting renewables and recycling, advanced manufacturing, agribusiness, innovation and education and freight and logistics industries.	\$169.6 million	\$105.0 million
Snowy Mountains Special Activation Precinct		
The precinct will support a diverse mix of housing and grow the region into a year round tourism destination, focussing on tourism, recreation and public amenity, while preserving and maintaining the important environmental and heritage values of the Snowy Mountains.	\$45.6 million	\$23.6 million

Pages 4-47 to 4-48 of Chapter 4 of this *Infrastructure Statement* list the major capital projects and minor works for the Primary Industries and Regional Development agencies, including the ETC, estimated expenditure to 30 June 2025, and 2025-26 allocation.

Page 4-62 Chapter 4 of this *Infrastructure Statement* list the major capital projects accounted for by delivery agencies as inventory, including the ETC, estimated expenditure to 30 June 2025, and 2025-26 allocations.

2.9 Transport



Transport plays a key role in making New South Wales a better place to live, work and visit by connecting people and communities. Integrated transport networks including road, train, metro, bus, ferry, light rail, cycling and walking are critical for driving economic growth, wellbeing, and creating vibrant precincts and cities.

\$55.6
billion

Capital
Expenditure
to 2028-29

\$14.4
billion

Capital
Expenditure
2025-26

The Transport capital program includes a \$55.6 billion investment over the four years to 2028-29, including major investment in Sydney's transformational Metro projects and regional roads and rail fleet.

Table 2.18: Key new Transport projects commencing in 2025-26 included in this Budget

Project	Estimated total cost	Expenditure over four years to 2028-29
Western Sydney Heavy Vehicle Rest Area		
Delivering a new heavy vehicle rest area at Eastern Creek, provide space for a range of heavy vehicles, including oversize overmass, that will provide truck drivers a safe and accessible area to rest and manage fatigue as part of their journey (NSW and Australian Government funded).	n.a.	\$51.5 million
Devonshire Road (Planning)		
Delivering a business case for Devonshire Road to Mamre Road link with M12 access. This vital link will connect Mamre Road precinct, reducing travel times and improving freight access and connectivity.	n.a.	\$14.0 million
Richmond Road Corridor Upgrade (Planning)		
Delivering a business case for upgrade of Richmond Road corridor between M7 Motorway and The Driftway. The project will help finalise planning on the Richmond Road corridor to inform a future investment decision for construction (NSW and Australian Government funded).	n.a.	\$72.9 million
Garfield Road West (Planning)		
Planning and pre-development activities to support the upgrading of a 3.2 kilometre section of Garfield Road West between Richmond Road, Marsden Park and Denmark Road, Riverstone. The upgrade will increase road capacity to accommodate growing traffic demand, improve safety and provide more efficient public transport services with bus priority signals and more dedicated traffic lanes (NSW and Australian Government funded).	n.a.	\$13.5 million
Townson and Burdekin Road Upgrades (Planning)		
Planning and pre-development activities to support the upgrading of 1.6 kilometres of Townson Road between Richmond Road and Jersey Road, delivering two-lanes in either direction, separated by a raised median (NSW and Australian Government funded).	n.a.	\$15.0 million
Francis Road Rail Overpass at Rooty Hill (Planning)		
Delivering a business case for the construction of a new two-lane bridge over the railway to accommodate a dual northbound carriageway.	n.a.	\$3.5 million
Devonshire Link Road and Bradfield Metro Link Road (Planning)		
Delivering a business case for Devonshire Link Road and Bradfield Metro Link Road (NSW and Australian Government funded).	n.a.	\$25.0 million

Project	Estimated total cost	Expenditure over four years to 2028-29
Flushcombe Road and Bungarribee Road Intersection Upgrade (Planning)		
Planning to upgrade the roundabout at the intersection of Bungarribee Road and Flushcombe Road, Blacktown to improve road safety, travel times and pedestrian accessibility.	n.a.	\$1.5 million
Airport Precinct Safety and Access Program (APSAP)		
Planning and delivery of short-term safety and access improvements within the Western Sydney Airport Precinct.	n.a.	\$52.6 million
Western Sydney International Airport Wayfinding		
Delivering integrated Wayfinding and Signage transport solution for Western Sydney Airport Precinct. This will provide improved connectivity for passengers and customers through integration of state-wide customer information and signage.	n.a.	\$30.0 million
Rouse Hill Hospital Transport Integration (Planning)		
Developing a business case for the delivery of road capacity and safety improvements along Windsor Road, including the intersection with Commercial Road to support the new Rouse Hill Hospital.	n.a.	\$10.0 million
Sydney Fish Markets Ferry Stop		
Delivering a Passenger and Commuter Wharf at the New Sydney Fish Markets to support expected patronage and tourist demand.	n.a.	\$30.0 million
Terrigal Drive Upgrade		
Delivering essential road infrastructure to improve safety, reduce congestion, and enhance transport efficiency (Australian Government funded).	n.a.	\$75.0 million
Tichborne and Harris Gates Grade Separation Road Interface		
Continuing development and for the delivery of grade separation road interfaces at Tichborne (Newell Highway south of Parkes) and Harris Gates (Olympic Highway near Illabo). This project will improve safety and reduce delays where Inland Rail intersects the Newell and Olympic highways (NSW and Australian Government funded).	n.a.	\$206.0 million
Safe, Accessible Transport Upgrades		
Planning and delivering upgrades to public transport infrastructure to achieve Disability Standards for Accessible Public Transport (DSAPT) compliance, improving amenity, access and safety for locations including Wentworth Park Light Rail stop.	n.a.	\$40.0 million

Table 2.19: Key State-wide Transport projects continuing in this Budget

Project	Estimated total cost	Expenditure over four years to 2028-29
Road Safety Investment		
Continuing the Government's commitment to the Road Safety Action Plan to fund targeted and proven initiatives to improve road safety in New South Wales. The Towards Zero Safer Roads Program and Australian Government funded Road Safety works builds on existing investment in thousands of kilometres of audio-tactile line markings, wide centre lines, school safety infrastructure works, crash barriers in regional New South Wales and other life-saving infrastructure across the State (NSW and Australian Government funded).	n.a.	\$1.2 billion
Zero Emissions Buses Program		
Transitioning the State's 8,000 plus diesel and natural gas public transport buses to zero emissions technology to contribute to the delivery of the NSW Government's commitment to achieve net zero emissions by 2050, and to provide more comfortable journeys and liveable places for our passengers and communities.	n.a.	\$2.1 billion
New Buses to Cater for NSW Services		
Procuring new buses to deliver reliable services across New South Wales.	n.a.	\$844.3 million
Urban Roads Fund (URF)		
Improving capacity on key road corridors in Sydney to support housing uplift and flood resilience (through Western Sydney Flood Resilience which is part of URF) and smaller projects to reduce congestion on roads in local communities.		
<ul style="list-style-type: none"> \$143.5 million to upgrade 1.8-kilometre section of Henry Lawson Drive Stage 1B between Auld Ave and the approach to the M5 Motorway. Widening of Henry Lawson Drive from 2 lanes to 4 lanes, intersection upgrades at Bullecourt Ave and Pozieres Ave, provision of new link roads between Auld Ave, Keys Parade, and Raleigh Road, and shared paths and footpaths (NSW and Australian Government Funded) \$175.0 million to duplicate sections of Heathcote Road \$13.8 million for the Driftway Roundabout at Londonderry \$12.4 million for planning the upgrade of Spring Farm Parkway Stage 2 (NSW and Australian Government Funded) \$4.0 million for the planning of Pedestrian Overpass at Hurstville Primary \$3.5 million for traffic lights at Bank Street. 	n.a.	\$352.3 million * * Excludes some projects that are partly funded through URF and are separately featured:

Project	Estimated total cost	Expenditure over four years to 2028-29
Regional Roads Fund		
Regional Roads Fund will allocate funding for new roads in rural and regional areas including:		
<ul style="list-style-type: none"> • \$18.4 million to investigate the extension of Memorial Drive to provide a potential bypass of the Bulli town centre • \$20.0 million for improvements on Golden Highway, including improvements approaching Merriwa • \$29.0 million for the planning and design of Gosford Bypass • \$11.3 million for Alphadale Crossroads intersection on the Bruxner Highway to improve driver safety • \$28.3 million for planning for potential additional entry and exit ramps to connect motorists in Dapto to the M1 Princes Motorway (NSW and Australian Government Funded) • \$39.9 million towards the planning and early work of Thornton rail bridge duplication • \$14.9 million for the Speers Point intersection and network improvements, including \$5.0 million additional funding which brings total funding to \$16.0 million • \$4.8 million for planning for the southern left-hand slip lane at Tuross Head Intersection at the turnoff from the Princess Highway into Tuross Head • \$32.7 million for signalling at the Yass, Bungendore, and Ellerton Drive roundabout intersection • \$15.2 million to deliver road approaches leading to the new Burley Griffin Way road-over-rail bridge at Wallendbeen. 	n.a.	\$214.5 million
Pinch Points		
Continuing NSW and Australian Government funded investment in small scale traffic improvements that provide big benefits to customers, including reduced congestion and travel times.	n.a.	\$162.5 million
RegStar Program (Planning and development)		
Enhancing the RegStar Program with self-contained elements dedicated to targeted scheme delivery, robust project planning, and efficient case management through Customer Relationship Management (CRM)/Customer Success Management (CSM) systems, supported by the development of advanced BI and analytics.	n.a.	\$53.5 million
Executing a comprehensive project plan, delivery model, implementation plan and an updated business case for full DRIVES replacement.		
Maritime Infrastructure Upgrades		
Upgrading ferry wharves to improve accessibility and continue ongoing maintenance and upgrades to various regional maritime assets.	n.a.	\$59.6 million
Active Transport		
Developing and delivering projects that expand connected cycleway networks, which increase opportunities for cycling and walking in and around connected centres. Active Transport projects encourage more people to choose walking and cycling as modes of transport.	n.a.	\$96.1 million

Table 2.20: Key Sydney Metropolitan Transport projects continuing in this Budget

Project	Estimated total cost	Expenditure over four years to 2028-29
Sydney Metro West Delivering a new metro line connecting Greater Parramatta with the Sydney CBD.	n.a.	\$10.8 billion
Sydney Metro – Western Sydney Airport Delivering six new metro stations to service the future Western Sydney International (Nancy-Bird Walton) Airport and the Western Sydney Aerotropolis, interchanging with the T1 Western Line at St Marys (NSW and Australian Government funded).	n.a.	\$3.6 billion
Sydney Metro City and Southwest Delivering the final stage from Sydenham to Bankstown, of an extension of the M1 Line (formerly known as the Metro North West Line) from Chatswood, under Sydney Harbour, through new CBD stations and southwest to Bankstown.	n.a.	\$801.4 million
Sydney Metro – Western Sydney Airport – Northern extension – Business Case Developing a business case for a potential future rail connection between St Marys and Tallawong.	\$40.0 million	\$33.0 million
South West Sydney Rail Planning – Business Case Developing a business case for potential future rail connections between Bradfield and Leppington/Glenfield, and between Bradfield and Campbelltown/Macarthur (NSW and Australian Government funded).	n.a.	\$54.7 million
Western Harbour Tunnel Upgrade Continuing the delivery of the first stage of tunnelling works for a new crossing of Sydney Harbour. The first package will include construction of 1.7 kilometres of mainline tunnels from Rozelle to Birchgrove. The second package includes construction of northern tunnels from Birchgrove, through Sydney Harbour and onto North Sydney, the marine work and all the tunnel fit-out.	\$7.4 billion	\$3.8 billion
Warringah Freeway Upgrade Continuing upgrades of the Warringah Freeway for surface roads, bridges and interchanges along 4 kilometres of the freeway corridor.	\$2.0 billion	\$242.7 million
M6 Extension Stage 1 Continuing the extension works which aims to remove more than 2,000 trucks a day from surface roads, enable motorists to bypass up to 23 sets of traffic lights on the Princes Highway and enhance pedestrian and cyclist safety through shared pathways.	n.a.	\$501.1 million
The M12 Motorway Continuing to deliver a new motorway as part of the Western Sydney Infrastructure Plan. The project will provide direct access to the Western Sydney International (Nancy-Bird Walton) Airport, running east to west, linking the M7 Motorway, The Northern Road and Elizabeth Drive. It will also improve the freight movement in and through Western Sydney (NSW and Australian Government funded).	\$2.0 billion	\$116.2 million

Project	Estimated total cost	Expenditure over four years to 2028-29
M5 Motorway, Moorebank Avenue and Hume Highway Intersection Upgrade		
Delivering the M5 Westbound Traffic Upgrade to provide a new two-lane bridge over Georges River and rail line, and a new underpass at Moorebank Avenue. These upgrades will reduce congestion and improve travel times, accessibility and connectivity of road networks (NSW and Australian Government funded).	n.a.	\$356.7 million
New Richmond Bridge and Traffic Improvements		
Providing a new bridge over the Hawkesbury River between Richmond and North Richmond. The project will deliver journey time reliability, safer connections along the road corridor and improve flood resilience (NSW and Australian Government funded).	n.a.	\$455.3 million
Mamre Road Stage 1 - M4 Motorway to Erskine Park Road		
Widening 3.8 kilometres of Mamre Road, between the M4 Motorway and Erskine Park Road, from a two-lane undivided road to a four-lane divided road, with provision for two additional lanes in the future. This upgrade will provide a safer and higher capacity link.	\$290.0 million	\$202.8 million
Richmond Road Upgrade between Elara Boulevard and Heritage Road, Marsden Park		
Upgrading a section of Richmond Road, north of Elara Boulevard. The upgrade will provide safer and improved access to fast growing residential developments in the Marsden Park precinct and future commercial and residential developments in the Marsden Park North precinct (NSW and Australian Government funded).	n.a.	\$152.6 million
Epping Station Bridge Replacement		
Replacing the Epping Road Bridge over rail near Epping Train Station to provide additional westbound lane, central median and wider footpaths (NSW and Australian Government funded).	n.a.	\$122.5 million
Hill Road Upgrade (at Sydney Olympic Park and Lidcombe)		
Upgrading Hill Road between Parramatta Road and Old Hill Link Road to improve connectivity to Carter Street Precinct and Sydney Olympic Park.	\$140.0 million	\$99.4 million
King Georges Road, Stoney Creek Road to Connells Point Road - Stage 1 and 2A		
Widening King Georges Road from two lanes to three lanes in each direction and constructing a dedicated right turn lane for south bound motorists turning into Percival Street. The upgrade will benefit an estimated 43,000 motorists by reducing congestion, improving travel times and boosting safety for all users (NSW and Australian Government funded).	\$219.0 million	\$71.0 million
Homebush Bay Drive		
Upgrading the intersection of Homebush Bay Drive, Australia Avenue and Underwood Road. The project will ease congestion, increase safety and improve travel times to Homebush and Sydney Olympic Park (NSW and Australian Government funded).	n.a.	\$183.5 million

Project	Estimated total cost	Expenditure over four years to 2028-29
Heathcote Road, Infantry Parade Hammondville to the Avenue, Voyager Point Widening and upgrading a 2.2-kilometre section of Heathcote Road between Infantry Parade and The Avenue to a four-lane divided road, and upgrading intersections at Heathcote Road and The Avenue, and at Heathcote Road and Macarthur Drive. The project also duplicates the existing bridges at Harris Creek, Williams Creek and over the railway line, as well as providing active transport connections along Heathcote Road (NSW and Australian Government funded).	\$183.0 million	\$44.1 million
Henry Lawson Drive Upgrade Stage 1A Continuing construction of Stage 1A which involves widening between Tower Road, Georges Hall and Auld Avenue, Milperra to double capacity and reduce congestion.	\$136.5 million	\$24.3 million
Connecting Sydney Roads Upgrading the Sydney road network to support population and employment growth in Sydney. Key projects include: <ul style="list-style-type: none"> • \$833.4 million for Mamre Road Stage 2 - Erskine Park Road to Kerrs Road (NSW and Australian Government funded) • \$580.1 million for Elizabeth Drive Upgrades (NSW and Australian Government funded) • \$392.8 million for Richmond Road Upgrade between M7 Motorway and Townson Road, Marsden Park (NSW and Australian Government funded) • \$196.5 million for Mulgoa Road Stage 2 – Glenmore Parkway to Jeanette Street (NSW and Australian Government funded) • \$190.0 million for Mona Vale Road West - McCarrs Creek Road to Powder Works Road (NSW and Australian Government funded) • \$175.0 million for Garfield Road East (NSW and Australian Government funded) • \$145.8 million for Bandon Road Corridor Upgrade and Extension (Planning) (NSW and Australian Government funded) • \$138.0 million for Appin Road Upgrades (NSW and Australian Government funded) • \$123.4 million for The Horsley Drive, M7 Motorway to Cowpasture Road (NSW and Australian Government funded) • \$105.5 million for Western Sydney Long Term Strategic Transport Corridor Preservation • \$67.5 million for Wakehurst Parkway • \$58.8 million for Mulgoa Road Stage 1 – Blaikie Road to M4 Motorway (NSW and Australian Government funded). 	n.a.	\$3.0 billion ^(a)
(a) Note figure excludes projects that are featured in other tables: Epping Station Bridge Replacement; Heathcote Road, Infantry Parade, Hammondville to The Avenue, Voyager Point; Western Sydney Heavy Vehicle Rest Area; Henry Lawson Drive Upgrade Stage 1A; Hill Road Upgrade; Homebush Bay Drive Upgrade; King Georges Road, Stoney Creek Road to Connells Point Road – Stage 1 & 2A; Mamre Road Stage 1 - M4 Motorway to Erskine Park Road; New Richmond Bridge and Traffic Improvements; Picton Bypass (Planning); Richmond Road Upgrade between Elara Boulevard and Heritage Road, Marsden Park; Garfield Road West (Planning); Townson and Burdekin Road Upgrades (Planning); Richmond Road Corridor Upgrade (Planning); Francis Road Rail Overpass at Rooty Hill (Planning); Devonshire Link Road and Bradfield Metro Link Road (Planning); Devonshire Road (Planning).		

Project	Estimated total cost	Expenditure over four years to 2028-29
Macquarie Park Precinct and Bus Interchange		
Upgrading the bus interchange and precinct that creates a place for people to enjoy, meet and connect. Connecting people to Macquarie University, Macquarie Centre, Macquarie Business Park and residential and commercial areas. The upgrade will improve travel efficiency and connectivity, making it easier for people to move safely into and around Macquarie Park (NSW and Australian Government funded).	n.a.	\$94.5 million
Pitt Town Bypass		
Upgrading the bypass to reduce traffic through the town centre, improve safety for road users and enhance flood resilience for local residents.	\$110.0 million	\$88.0 million
Fifteenth Avenue Upgrade		
Planning and delivering a new Fifteenth Avenue Upgrade, which is a vital east-west connection along Fifteenth Avenue between Liverpool and Bradfield providing a direct bus connection (NSW and Australian Government funded).	n.a.	\$634.4 million
Parramatta Light Rail Stage 2		
Connecting Stage 1 with the 12km alignment to link the Parramatta CBD to Sydney Olympic Park via Camellia, Rydalmere, Ermington, Melrose Park and Wentworth Point with 14 new stops, three new river crossings and 8.5km of new walking and cycling paths.	n.a.	\$395.5 million
Parramatta Class Ferries		
Procuring new Australian made, New South Wales designed Parramatta Class ferries. This ferry purchase program allows the gradual retirement of the seven RiverCat ferry fleet while maintaining service levels.	\$49.0 million	\$1.9 million
Safe, Accessible Transport Program		
Continuing to deliver and develop upgrades to stations to achieve Disability Standards for Accessible Public Transport (DSAPT) compliance, improving amenity, access and safety.	n.a.	\$429.5 million
Rail Service Improvement Program		
Continuing the program to simplify and modernise the rail network and integrate Sydney Metro City and Southwest with Sydney's train network. Customers can expect more frequent train services with shorter wait times and reduced crowding, including additional services on the Illawarra, Airport and South Coast lines.	n.a.	\$1.5 billion
New Bus Services for Western Sydney		
Delivering new bus services which will connect Liverpool, Penrith and Campbelltown to the Western Sydney International Airport and Bradfield City Centre (NSW and Australian Government funded).	n.a.	\$313.8 million
Eastern Ring Road and Badgerys Creek Road South (Planning)		
Planning for priority roads which form part of the Western Sydney Airport Precinct Road Network. This will improve access to new jobs and housing in the Aerotropolis (NSW and Australian Government funded).	n.a.	\$24.7 million
South West Sydney Roads (Planning)		
Planning for the South West Sydney Roads program which will identify critical road upgrades needed to support growth areas including the Greater Macarthur, South West Sydney and Wilton (NSW and Australian Government funded).	n.a.	\$63.3 million

Project	Estimated total cost	Expenditure over four years to 2028-29
Western Sydney Roads (Planning)		
Planning for the key corridors in Western Sydney to support housing growth by ensuring that road infrastructure can keep pace with the current and future transportation needs of the rapidly expanding population of Western Sydney (NSW and Australian Government funded).	n.a.	\$29.7 million
Western Sydney Freight Line and Intermodal Terminal (Planning and Development)		
Continue planning for the Western Sydney Freight Line and Intermodal Terminal which will provide the missing link in NSW's freight rail network connecting Port Botany and Western Sydney (NSW and Australian Government funded).	n.a.	\$59.8 million
Tangara Fleet Life Extension		
Extending the life of the Tangara Fleet to operate until 2036, beyond the extended design life in 2028, to resolve obsolescence, ageing, safety and customer experience issues. This will enable a longer term replacement to come online with >50 per cent local manufacturing content.	\$447.0 million	\$439.1 million
Future Fleet Program (Planning)		
Delivering a Full Business Case for the Future Fleet Program to seek an investment decision for a long-term domestic rolling stock pipeline with a 50 per cent local content target, to design a modern, fit for purpose double deck suburban passenger train to replace the Tangara, with consideration of the Millenium and OsCAR fleets. This includes associated infrastructure and asset upgrades to support the new fleet deployment.	n.a.	\$87.7 million

Box 2.16: Zero Emission Buses (ZEB)

The Zero Emission Buses program is a multi-billion dollar initiative aimed at transitioning over 8,000 diesel and natural gas buses to zero emissions technology. This transition supports the NSW Government's commitment to achieving net zero emissions by 2050.

The program will be delivered in stages, with the first stage introducing 1,200 new electric buses for Greater Sydney by 2028 to give an expected electric bus fleet size of approximately 1,700 (out of approximately 8,000).

Brookvale bus depot will be the first full depot transition to be completed for the ZEB program which will accommodate up to 229 electric buses. This depot will use Pantograph charging technology, where buses are charged by overhead rails that drop down to contact rails on the roof of the bus. These buses will take roughly 15 minutes to charge to be ready for their next shift, with a full charge taking about one hour.

Figure 2.6: Zero Emission Buses Program Overview

Greater Sydney Stage 1 (2023 to 2028)

Program overview

1,200+ ZEBs

+300 under bus contracts

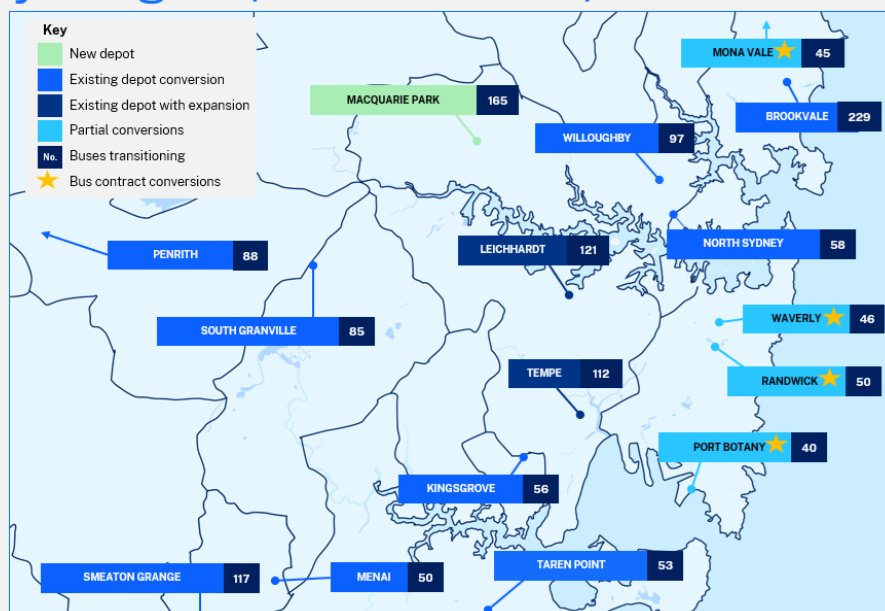
11 depot conversions

+4 under bus contracts

New depot for
Region 7

Electrical grid
upgrades

Transition yard



Box 2.17: Bus Service Improvements**Bus Service Uplift**

Bus Service Uplift responds to strong demand across the State to ensure that communities are better connected. New funding will enable the creation, reinstatement and extension of existing routes, improved connections to rail services, and school precincts in priority areas.

B-Poles – Wayfinding Bus Signage Rollout Program

B-Poles improve the customer experience at bus stops and across all modes of transport by providing a consistent transport identity and clear, accessible information. Each B-Pole includes mode identification, stop name and number, a timetable, a map, and a QR code linking to real-time service updates. As part of an integrated transport wayfinding system, B-Poles help build customer confidence in using the NSW bus network, support a shift towards public transport as the preferred mode of travel, and ensure Transport complies with the Disability Standards for Accessible Public Transport (DSAPT).

As of May 2025, the Bus Signage Rollout Program (BSRP) has installed B-Poles at 17,293 bus stops across Greater Sydney and the Regional and Outer Metropolitan areas. The current phase will deliver B-Poles to an additional 5,500 bus stops across Greater Sydney, with installations commencing in June 2025 and scheduled for completion by 28 February 2026.

Articulated Buses and B-Line Double Deckers

The Government is investing in 50 new articulated buses and 10 double-decker B-Line buses to increase capacity and improve service efficiency. These buses are designed to accommodate more passengers and provide a more comfortable journey.

Bus Transport Management System (BTMS)

The BTMS will be implemented to enhance the management and operation of the bus network. This system will improve scheduling, route planning, and overall service reliability, ensuring a more efficient and responsive bus network.

These projects collectively aim to modernise the bus network, improve service reliability, and support the transition to a sustainable, zero-emission future for public transport in New South Wales.

Box 2.18: Vibrant Streets Package

The Vibrant Streets Package supports the NSW Government's Vibrancy agenda by creating more flexible, safe and welcoming transport hubs and public spaces.

It does this in three ways. First, it helps activate public transport hub precincts with funding for street-based events and activations, including during major events.

Secondly, it helps permanently bring down the cost of activations and community initiatives by funding structural infrastructure or space improvements (e.g. retractable bollards). In New South Wales, closing a street for an event can cost more than \$130,000.

Finally, it will enable changes to public space and infrastructure that improve perceptions of safety and experience for women and girls.

Our streets, roads and laneways – which account for 80 per cent of public spaces in urban centres across New South Wales – play a critical role not only for transportation, but in fostering public life, supporting local jobs, showcasing local content and small business, improving mental and physical wellbeing, and allowing us to connect with each other and our environment.

Figure 2.7: Vibrant Street Package



Box 2.19: Transport and Road Projects for Western Sydney Aerotropolis

New Bus Services for Western Sydney

- The New Bus Services for Western Sydney will commence ahead of the airport's opening , providing early access to reliable and efficient transport connections.
- These bus services will play a vital role in supporting the immediate transport needs of growing communities, businesses, and construction sites at Western Sydney International Airport and Bradfield City Centre.
- Stage 1 includes the following scope: Introducing five new local bus routes, new zero emission bus fleet, safety improvements to Badgerys Creek Road, securing land for a new Zero Emission Bus (ZEB) depot, new bus interchange and bus layover at Bradfield and layover at Western Sydney International Airport.
- The project is jointly funded by the NSW and Australian Governments.

Sydney Metro Western Sydney Airport Metro

- Sydney Metro- Western Sydney Airport is being jointly funded by the NSW and Australian Governments and provides a direct connection for the new Western Sydney International Airport.
- Sydney Metro is essential to support increased housing supply and new employment and liveability opportunities, including serving as a transport spine for Greater Western Sydney.

Airport Precinct Safety and Access Program

- The Airport Precinct Safety and Access Program is focusing on identifying potential short-term safety access improvements within the Western Sydney Airport Precinct.
- These changes will help the existing road network better cater for increased traffic while longer-term upgrades are planned and delivered across the Airport Precinct.
- The Incident management program will provide an integrated transport network operations in the Western Sydney Airport Precinct.
- The funding committed will allow to bring the critical incident response team closer than the current depot that is 40 minutes away.

Box 2.20: \$5.5 billion Western Sydney Roads package

In partnership with the Australian Government, the NSW Government is delivering:

M12 Motorway

- Construction is well underway on the new toll-free M12 motorway, which will provide direct access to Western Sydney International (WSI) Airport and connect to Sydney's motorway network.
- The M12 is essential to the success of WSI saving up to 16 minutes travel time compared to the existing road network.
- The M12 is expected to be open to traffic ahead of passenger services commencing at WSI in late 2026.

Elizabeth Drive Upgrade

- Detailed design is underway for an upgrade to a key section of Elizabeth Drive between Devonshire Road and Martin Road.
- The upgrade will provide two lanes in each direction, providing a connection for local traffic and buses to WSI and to growing precincts in the Western Sydney Aerotropolis.

Mamre Road Upgrade

- Construction is underway for the upgrade of Stage 1 Mamre Road between the M4 motorway and Erskine Park Road.
- The upgrade will increase road capacity, reducing congestion and delays in peak hours.
- The upgrade to this section of Mamre Road is expected to be completed by 2028.
- Detailed design is underway for an upgrade for Stage 2 Mamre Road between Erskine Park Road and Kerrs Road.
- Widening of the road in this section will support growth in the Mamre Road Precinct, a major employment area in Western Sydney.

Fifteenth Avenue Upgrade

- Planning is underway for an upgrade of Fifteenth Avenue between Cowpasture Road and Devonshire Road.
- Widening the road will improve road safety for all road users and reduce congestion, supporting growth in residential areas in Liverpool Local Government Area.
- The upgrade is the first stage towards the Fifteenth Avenue Upgrade, which will connect Liverpool to Bradfield City Centre and WSI.

Box 2.20: \$5.5 billion Western Sydney Roads package (cont.)**Western Sydney International Airport Precinct Road Network**

- Transport for NSW has a 30 year vision for a safe, sustainable and integrated transport network in the Aerotropolis. This includes the WSI Airport Precinct Road Network that will be delivered in stages in line with growth.
- The project is jointly funded by the NSW and Australian Governments.
- Planning is underway for the priority roads in this network. This includes:
 - the Badgerys Creek Road South / Eastern Ring Road corridor which will provide a north-south connection east of WSI
 - Bradfield Metro Link Road, which will connect the local road network to Bradfield City Centre, including bus services
 - Devonshire Link Road, which will connect the Aerotropolis to the Mamre Road Precinct.

Box 2.21: North West Sydney Roads

The North West Growth Area is a fast-growing region experiencing significant demand on its transport network. This Program comprises a suite of planning and delivery projects designed to alleviate congestion, boost capacity, and support growth across key transport corridors. These include the following projects jointly funded with the Australian Government with the exception of Francis Road Rail Overpass at Rooty Hill.

Richmond Road Upgrade between M7 Motorway and Townson Road, Marsden Park

- Richmond Road is an arterial road which provides a vital link for commuters and freight between Blacktown and Windsor.
- It forms part of the wider network from the M7 Motorway to new housing and employment precincts in the North West Growth Area, resulting in significantly more traffic in the area.
- Each day over 89,000 vehicles travel through the Richmond Road and Rooty Hill Road North intersection. Road users currently experience heavy congestion, slow travel times and delays when travelling through the Richmond Road.
- Transport's aim is to ease congestion and improve traffic flow by widening Richmond Road and upgrading intersections.

Richmond Road Upgrade between Elara Boulevard and Heritage Road, Marsden Park

- Transport for NSW completed the four-lane upgrade of Richmond Road between M7 Motorway and Garfield Road West in 2016. Transport for NSW is proposing to continue the Richmond Road upgrade from north of Elara Boulevard.
- The upgrade would provide safer and improved access to fast growing residential developments in the Marsden Park precinct and future commercial and residential developments in the Marsden Park North precinct.

Box 2.21: North-West Sydney Roads (cont.)

Richmond Road Corridor Upgrade (Planning)

- Planning is underway for further upgrades along the Richmond Road corridor to accommodate future growth and improve connectivity.

New Richmond Bridge and Traffic Improvements

- Planning and design are in progress for a new Richmond Bridge and associated traffic improvements to alleviate congestion and enhance traffic flow in the area.

Garfield Road East

- The Garfield Road East corridor extends 3.4 kilometres between Piccadilly Street, Riverstone and Windsor Road, Box Hill. The NSW Government proposes to widen the two-lane road to four lanes, with the opportunity to expand this to six in the future
- Planning is underway for the upgrade of Garfield Road East to improve traffic capacity and safety.

Garfield Road West (Planning)

- The Garfield Road West extends 3.2 kilometres between Richmond Road, Marsden Park and Denmark Road, Riverstone. Similar planning efforts are focused on Garfield Road West to support future growth and reduce congestion.

Francis Road Rail Overpass at Rooty Hill (Planning)

- Planning is in progress for a rail overpass at Francis Road, Rooty Hill, aimed at improving traffic flow and safety.

Bandon Road Corridor Upgrade and Extension (Planning)

- The new Bandon Road corridor runs between Richmond Road, Marsden Park and Windsor Road, Vineyard. Bandon Road is part of the North West Growth Centre Road Network Strategy.
- Planning is underway for the upgrade and extension of the Bandon Road corridor to enhance connectivity and support growth.

Townson and Burdekin Road Upgrades (Planning)

- Transport has developed a proposal for a four-lane divided road along Townson Road and Burdekin Road linking Richmond Road, Marsden Park in the west and Burdekin Road, Schofields in the east. The length of the project is about 3.6 kilometres.

Table 2.21: Key Regional and Outer Metro Transport projects continuing in this Budget

Project	Estimated total cost	Expenditure over four years to 2028-29
Princes Highway Corridor Upgrade		
Continuing investments for priority projects including:		
<ul style="list-style-type: none"> Jervis Bay Road Intersection Upgrade, to improve safety, reduce congestion and improve access to local roads (NSW and Australian Government funded) Jervis Bay Road and Hawken Road (NSW and Australian Government funded) Milton-Ulladulla Bypass to improve safety, journey times and freight efficiency (NSW and Australian Government funded) Princes Highway Safety and Freight Productivity Upgrades. 	n.a.	\$680.5 million
Pacific Highway Corridor - M1 to Raymond Terrace and Hexham Straight Widening		
Continuing main works construction of the upgrade to connect the M1 Pacific Motorway and the Pacific Highway, and major construction on the Hexham Straight Upgrade between Newcastle Inner City Bypass and Hexham Bridge (NSW and Australian Government funded).	\$2.2 billion	\$741.7 million
Pacific Highway Corridor - Coffs Harbour Bypass		
Continuing construction of the Pacific Highway upgrade program to improve connectivity, road transport efficiency and safety for local and interstate motorists (NSW and Australian Government funded).	\$2.2 billion	\$548.5 million
New England Highway Duplication Goonoo Goonoo		
Finalising planning for the New England Highway Duplication (Goonoo Goonoo Road) (NSW and Australian Government funded).	n.a.	\$54.4 million
New England Highway Corridor - Muswellbrook Bypass		
Continuing early works activities and commence construction on the Muswellbrook Bypass to improve travel times for long-haul freight movements and safety for all road users on the New England Highway (NSW and Australian Government funded).	n.a.	\$267.0 million
New England Highway Corridor – Singleton Bypass		
Continuing main works construction of the bypass for Singleton to improve traffic flow, travel times and safety for motorists (NSW and Australian Government funded).	\$700 million	\$294.9 million
Newell Highway Corridor Upgrade		
Continuing the delivery of new Dubbo Bridge, heavy duty pavement upgrades, intersection upgrades at Hargraves Lane and Federation Street connecting the Newell Highway, Oxley Highway and Castlereagh Highways in Gilgandra, and to develop and deliver flood mitigation solutions on the Newell Highway between West Wyalong and Forbes (NSW and Australian Government funded).	n.a.	\$237.7 million
Wyong Town Centre		
Finalising planning and commencing construction for the upgrade of the Pacific Highway through Wyong Town Centre (NSW and Australian Government funded).	n.a.	\$341.8 million
Central Coast Highway, Tumby Road Intersection Upgrade		
Continuing construction of the Central Coast Highway, Tumby Road Intersection Upgrade (NSW and Australian Government funded).	\$65.5 million	\$47.8 million

Project	Estimated total cost	Expenditure over four years to 2028-29
Mandalong Road Upgrade Completing planning and commencing pre-construction for the Mandalong Road upgrade (NSW and Australian Government funded).	n.a.	\$50.5 million
Great Western Highway – Medlow Bath Continuing construction of the duplication of 1.1 kilometres of the Great Western Highway through Medlow Bath (NSW and Australian Government funded).	\$193.7 million	\$19.1 million
Bells Line of Road Upgrade Program Continuing development and delivery of safety upgrades to enable a safer journey on the scenic route between the Blue Mountains and Richmond (Australian Government funded).	n.a.	\$60.3 million
Newcastle Inner City Bypass from Rankin Park to Jesmond Completing construction of the final stage of the Newcastle Inner City Bypass between the Pacific Highway at Bennetts Green and the final stage of the Pacific Highway at Sandgate (NSW and Australian Government funded).	\$481.9 million	\$131.5 million
Barton Highway Upgrade Continuing improvements on the Barton Highway for road safety while enhancing tourism, driving economic growth and creating vibrant regional spaces (NSW and Australian Government funded).	n.a.	\$101.1 million
Hume Highway Upgrade Continuing pavement surface upgrades on the Hume Highway at Marulan.	n.a.	\$21.2 million
Mount Ousley Interchange Continuing major construction of the interchange to replace the existing intersection of the M1 Princes Motorway and Mount Ousley Road at the base of Mount Ousley (NSW and Australian Government funded).	\$390.0 million	\$267.1 million
Picton Road Upgrade (Planning) Continuing planning the upgrade of Picton Road to improve safety and connectivity as a key link for the Illawarra Region, South Coast, Sydney, Canberra and Melbourne (NSW and Australian Government funded).	n.a.	\$79.2 million
Waterfall Way Upgrade Continuing works along Waterfall Way including flood immunity projects to improve reliability and safety.	\$50.0 million	\$23.3 million
Marshalls Creek Bridge Commencing construction to widen the Sturt Highway to four lanes over Marshalls Creek Bridge to improve safety and ease congestion on the highway through Wagga Wagga.	\$30.0 million	\$23.1 million
Fixing Country Rail Program Providing improved capacity, access, efficiency and reliability of the regional rail network, as well as delivering a highly functional transport network for moving freight in and out of regional areas.	n.a.	\$53.3 million
Regional Rail Fleet Delivering a modern Regional Rail Fleet to replace the ageing XPT, XPLOER and Endeavour trains and improve travel.	n.a.	\$843.1 million

Project	Estimated total cost	Expenditure over four years to 2028-29
Mariyung Fleet (New Intercity Fleet) Delivering a new, state of the art fleet and associated power supply upgrades to provide a new level of comfort and convenience and improve accessibility and safety for customers who travel between Sydney, the Central Coast and Newcastle, the Blue Mountains and the South Coast.	n.a.	\$714.5 million
Mount Ousley Safety and Reliability Works (Planning) Continuing development activities and preparing a business case to improve safety and resilience of the M1 Princes Motorway at Mount Ousley (NSW and Australian Government funded).	n.a.	\$9.8 million
Golden Highway Dubbo to Newcastle Improvement Program (Planning) Continuing the finalisation of a business case for priority corridor solutions, including potential overtaking lanes and other improvements to also support ongoing renewable energy transition in regional New South Wales (NSW and Australian Government funded).	n.a.	\$9.6 million
Hume Highway Corridor Strategy (Planning) Continuing to deliver a corridor assessment and management strategy for the full length of the Hume Highway from Marulan to the Victorian Border (NSW and Australian Government funded).	n.a.	\$9.2 million
Swan Hill Bridge Replacement Continuing planning for a new bridge at Swan Hill and carry out staged maintenance work to maintain operational capacity and heritage significance (NSW and Australian Government funded).	n.a.	\$60.6 million
Narooma Bridge and Transport Improvements (Planning) Continuing the planning and early investigations into transport network improvements in and around Narooma, including Narooma Bridge (NSW and Australian Government funded).	n.a.	\$10.0 million
Nowra Bypass and Network Improvements (Planning) Continuing planning, as part of the Princes Highway upgrade program, that aims to provide improved safety, better connected communities, eased traffic congestion and support regional economies through the NSW South Coast (NSW and Australian Government funded).	n.a.	\$67.4 million
Picton Bypass (Planning) Planning for the Picton Bypass that would provide an alternative route for heavy vehicles by linking Thirlmere and Tahmoor with the Hume Motorway via Picton Road (NSW and Australian Government funded).	n.a.	\$16.4 million
Wallerawang Train Station Reactivation Continuing works on reopening of Wallerawang Station at Wallerawang to enable passenger train services to safely stop at the station.	\$7.0 million	\$5.4 million
Avoca Drive, Central Coast Continuing the planning for the upgrade of Avoca Drive to improve traffic flow and deliver infrastructure for active and public transport access through Kincumber (NSW and Australian Government funded).	n.a.	\$50.7 million
Nelson Bay Road - Williamtown to Bobs Farm Continue planning for the duplication of Nelson Bay Road from Williamtown to Bob's Farm (NSW and Australian Government funded).	n.a.	\$10.0 million

Project	Estimated total cost	Expenditure over four years to 2028-29
Pacific Highway - Harrington Road Intersection Upgrade, Coopersnook Finalising planning and commencing construction on the Pacific Highway Harrington Road Intersection upgrade (NSW and Australian Government funded).	n.a.	\$36.5 million

Box 2.22: Milton Ulladulla Bypass

The planning and delivery of a bypass of Milton and Ulladulla from the Princes Highway at Little Forest Road, Milton to Canberra Crescent, just north of Burrill Lake is jointly funded by the NSW and Australian Governments.

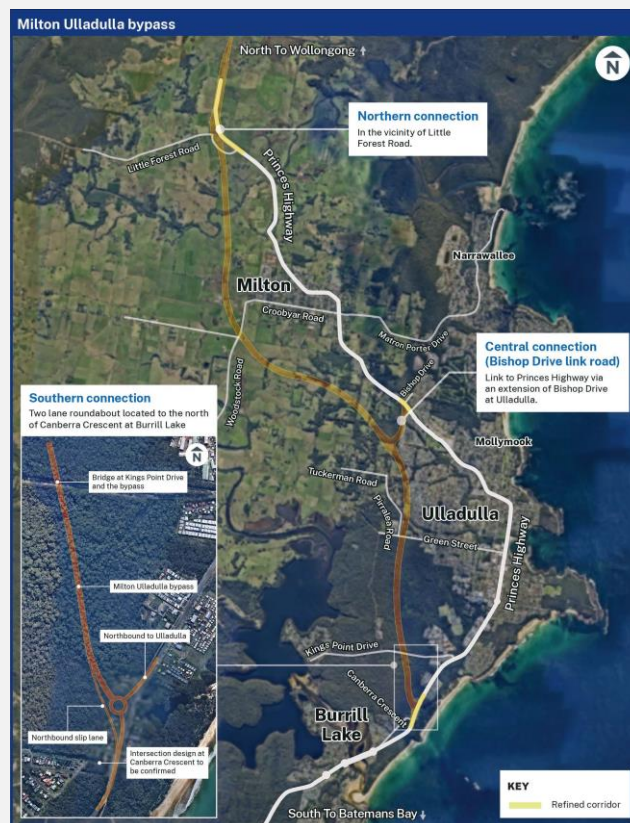
As part of the Princes Highway Upgrade Program, this state significant project aims to provide a safe, reliable, efficient and connected corridor that enables the movement of people and goods, supports sustainable growth while complementing and contributing to the character of the places it serves, is resilient to natural hazards and climate change, responds to changing land use and economic context, and supports new technologies. The team are now working with concept design and environmental assessment partner, Aurecon Australasia Pty Ltd to develop the concept design and complete an Environmental Impact Statement.

Key features of the project include:

- a road network of approximately 13 kilometres bypassing Milton and Ulladulla town centres
- a northern connection to the existing Princes Highway near Little Forest Road
- a central connection linking to the existing Princes Highway via an extension of Bishop Drive
- southern connection to the existing Princes Highway near Canberra Crescent.

Transport may refine the project area as the design develops and interchange options are evaluated.

Figure 2.8: Milton Ulladulla bypass map



Box 2.23: M1 to Raymond Terrace and Hexham Straight

The NSW and Australian Governments are funding the 15-kilometre M1 Pacific Motorway extension to Raymond Terrace project with a commitment of \$2.2 billion. The extension will boost the regional economy and improve connectivity, road transport efficiency and safety for local and interstate motorists.

The project addresses a key national motorway ‘missing link’ between Sydney and Brisbane as the existing M1 Pacific Motorway, New England Highway and Pacific Highway carry some of the highest traffic volumes across the Hunter.

The 15-kilometre extension of the motorway will feature: removal of five sets of traffic lights and cutting nine minutes from travel times during peak periods. It will also deliver a 2.6-kilometre viaduct over the Hunter River and floodplain, the Main North Rail Line, and the New England Highway. Additionally, there will be new bridge crossings over local waterways at Tarro and Raymond Terrace, and an overpass for Masonite Road at Heatherbrae.

The upgrade will provide:

- improved connection between the M1 Pacific Motorway and the Pacific Highway
- improved traffic flow for motorists and freight for more reliable travel times
- improved accessibility to the surrounding road network
- improved safety for all road users.

Achievements in 2024-2025 include:

- M1 to Raymond Terrace - 10/11 Bridges under Construction
- M1 to Raymond Terrace - 226/268 Bridge piles installed
- Hexham Straight – Ironbark Creek Southbound Bridge Opened to traffic – November 2024
- Hexham Straight – Demolition of Old Northbound Bridge over Ironbark Creek – March 2025.

Box 2.24: Medlow Bath Upgrade

The Australian and NSW Governments are investing \$193.7 million in the Medlow Bath Upgrade, including a new pedestrian bridge, which will reduce congestion and improve safety and accessibility for all road users, commuters, and pedestrians.

Transport for NSW is widening a 1.2 kilometres section of the Great Western Highway through Medlow Bath between 300 metres east of Bellevue Crescent to Station Street to two lanes in each direction, providing a safer, more efficient road.

Key features include:

- upgrade of 1.2 kilometres of the Great Western Highway
- a new pedestrian bridge providing disability compliant access across the highway and linking to a new lift to Medlow Bath Railway Station
- traffic signals and dedicated turning lanes to Bellevue Crescent
- improved access and dedicated turning lanes to the Hydro Majestic
- a new shared pathway and vegetated verge providing a buffer from the Highway
- safer access for properties facing onto highway
- improved water quality with a new water treatment basin
- improved landscaping and a community led landscaping initiative on Railway Parade
- new parking and garden beds on Railway Parade
- relocated mural bus shelter from the Great Western Highway to Medlow Park.

Box 2.25: Mount Ousley Interchange

The Australian and NSW Governments have jointly committed \$390 million to deliver the Mount Ousley Interchange upgrade. The Mount Ousley interchange has been designed to improve safety for road users by separating light and heavy vehicles, improve travel time and efficiency for all motorists, support growing freight movements, and improve access to and from the M1 Princes Motorway and Wollongong CBD. The contract for major construction work was awarded late in 2023 and major work is now underway.

The project includes:

- a heavy vehicle bypass lane for southbound travel, separating light and heavy vehicles
- separate off ramps for southbound light and heavy vehicles exiting the M1 Princes Motorway
- two heavy vehicle safety ramps
- a bridge over the M1 Princes Motorway with signalised intersections connecting the M1 Princes Motorway, Mount Ousley Road and the new access road to the University of Wollongong
- a commuter car park
- a roundabout that provides access to the M1 Princes Motorway and the University access road
- a shared path along the bridge over the M1 Princes Motorway and the University access road
- a southbound access road between Mount Ousley Road and University Avenue
- a pedestrian and cyclist bridge over the southbound access road
- a shared path connecting to the existing path from Helen Street, and upgrades to the shared path adjacent to TAFE NSW Wollongong.

Box 2.26: Muswellbrook Bypass

The New England Highway bypass of Muswellbrook is jointly funded by the NSW and Australian Governments. The bypass will improve travel times, freight efficiency and safety for all road users.

The New England Highway is part of the inland Sydney to Brisbane National Land Transport Network and the primary route connecting the Upper Hunter with Maitland and Newcastle. The highway currently passes through the centre of Muswellbrook. It is predominately a two lane road, restricted by numerous intersections, varying speed limits and nearby buildings with minimal setback from the road. The highway carries between 11,000 and 20,000 vehicles through the township each day, about 13 per cent being heavy vehicles.

The proposed bypass will reduce the volume of heavy vehicles travelling through Muswellbrook, improving safety and amenity in the township. The proposal would improve travel times by providing a free flowing 100 km/h alternative route.

The bypass will:

- improve network efficiency on the New England Highway, particularly travel times for long haul freight movements
- improve safety for all road users in the town centre, particularly relating to heavy and light vehicle interactions
- improve amenity of Muswellbrook township by removing freight traffic.

Figure 2.9: Muswellbrook bypass map



Pages 4-49 to 4-56 of Chapter 4 of this *Infrastructure Statement* list the major capital projects and minor works for the Transport agencies, including the ETC, estimated expenditure to 30 June 2025, and 2025-26 allocation.

2.10 Treasury (including Infrastructure NSW)



The Treasury capital program includes investment in its financial management system to support Treasury's economic and financial management responsibilities.

\$492.2
million⁹

Capital
Expenditure
to 2028-29

\$236.4
million⁹

Capital
Expenditure
2025-26

Infrastructure NSW is creating a sustainable infrastructure legacy for New South Wales by providing independent advice and assurance to government on the identification and prioritisation of critical public infrastructure and leading the development of nominated priority projects and precinct transformations.

Table 2.22: Key Treasury (including Infrastructure NSW) projects continuing in this Budget (capitalised)

Project	Estimated total cost	Expenditure over four years to 2028-29
Barangaroo Precinct		
Continue the transformation of the Barangaroo precinct including the fit-out of the Cutaway and coordination of the Central Barangaroo development including the delivery of a 1.85 hectare foreshore public park on Sydney Harbour.	\$725.0 million	\$195.7 million

Table 2.23: Key Treasury (including Infrastructure NSW) projects continuing in this Budget (inventory)

Project	Estimated total cost	Expenditure over four years to 2028-29
New Sydney Fish Markets		
Deliver the development of the New Sydney Fish Markets, including the construction of new public domain spaces and facilities to support Sydney's seafood industry, tourism, and community access to the waterfront.	\$810.2 million	\$41.1 million
Blackwattle Bay Urban Redevelopment		
Progress the revitalisation of Blackwattle Bay through precinct planning to support future development and delivery of a public park in Bank Street.	\$79.0 million	\$58.9 million

It should be noted that there is an additional \$26.0 million of operating expenses not classified as inventory bringing the estimated total cost of the New Sydney Fish Market and the Blackwattle Bay Urban Redevelopment \$915.2 million.

Pages 4-57 to 4-58 of Chapter 4 of this *Infrastructure Statement* list the major capital projects and minor works for the Treasury agencies, including the ETC, estimated expenditure to 30 June 2025, and 2025-26 allocation.

Page 4-62 Chapter 4 of this *Infrastructure Statement* list the major capital projects accounted for by delivery agencies as inventory, including the ETC, estimated expenditure to 30 June 2025, and 2025-26 allocations.

⁹ Includes infrastructure expenditure classified as inventory in accordance with Australian Accounting Standards.